


# NDB RWY 35

WATERTOWN RGNL (ATY)

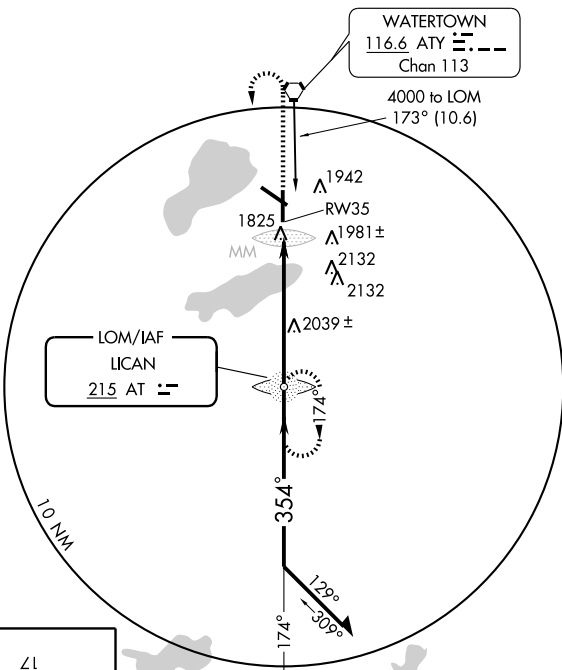
LOM AT <b>215</b>	APP CRS <b>354°</b>	Rwy Idg TDZE Apt Elev	<b>6894</b> <b>1745</b> <b>1749</b>
----------------------	------------------------	-----------------------------	---

**⚠** When local altimeter setting not received, use Brookings altimeter setting and increase all MDA 120 feet, increase S-35 Cat C/D visibility ½ mile, increase circling Cat C visibility ½ mile and Cat D visibility ¼ mile. Inoperative table does not apply to S-35 Cat A and B.

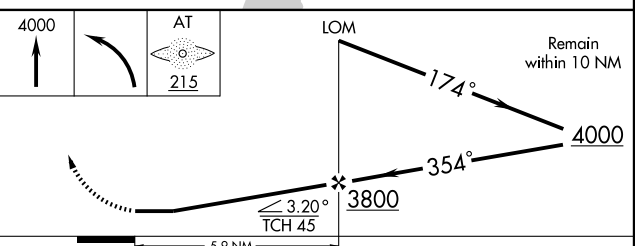
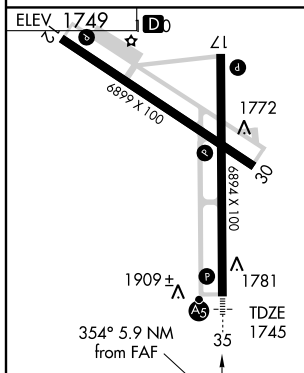
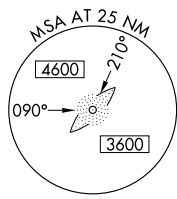
MALSR 

**MISSED APPROACH:**  
Climb to 4000 then left turn direct LICAN LOM and hold.

ASOS <b>126.625</b>	MINNEAPOLIS CENTER <b>128.5 306.2</b>	UNICOM <b>123.05 (CTAF) 0</b>
------------------------	--	----------------------------------



△ 2446



CATEGORY	A	B	C	D
S-35	2340-1 595 (600-1)			2340-1½ 595 (600-1½)
CIRCLING	2340-1	591 (600-1)	2340-1½ 591 (600-1½)	2340-2 591 (600-2)

FAF to MAP 5.9 NM

Knots	60	90	120	150	180
Min:Sec	5:54	3:56	2:57	2:22	1:58

NC-1, 22 OCT 2009 to 19 NOV 2009

NC-1, 22 OCT 2009 to 19 NOV 2009