

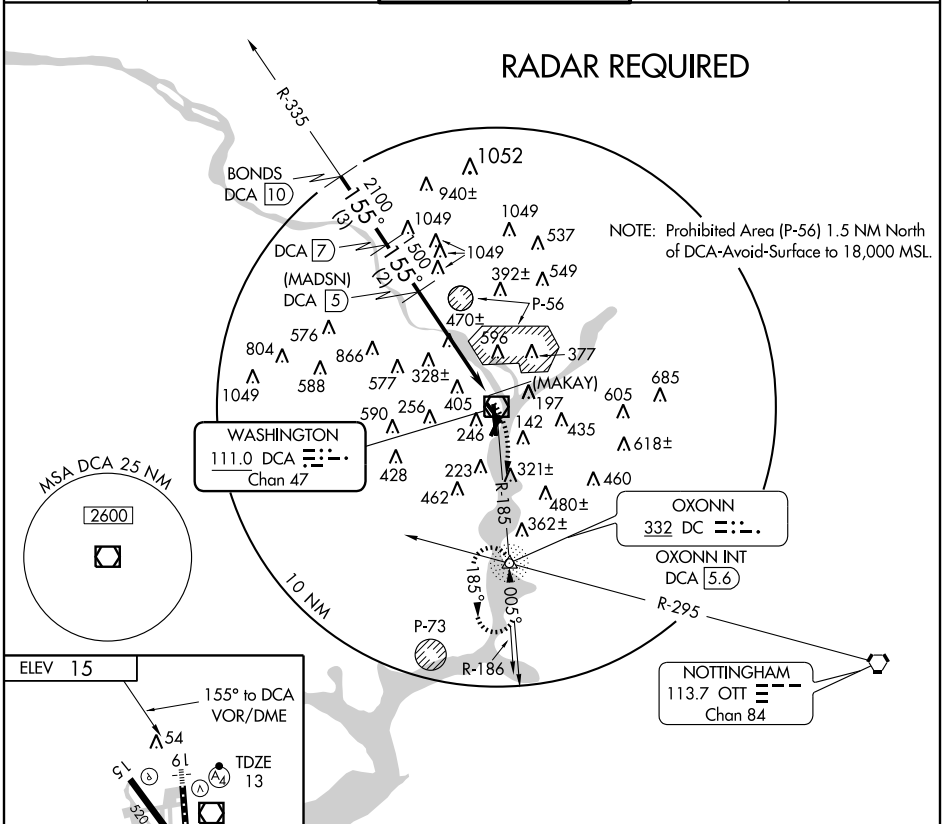
VOR/DME or GPS RWY 19

VOR/DME DCA	APP CRS	Rwy Ldg
111.0	155°	6869
Chan 47		TDZE 13
		Apt Elev 15

WASHINGTON/RONALD REAGAN WASHINGTON NATIONAL (DCA)

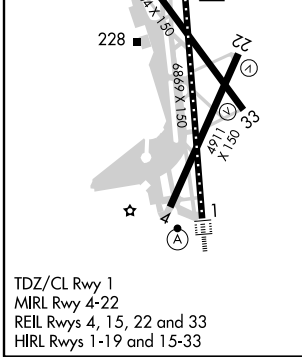
<p>▼ Inoperative table does not apply.</p> <p>▲ Circling Cats C and D not authorized northeast Rwy 15-33.</p>	<p>MALSF</p>	<p>MISSED APPROACH: Climbing right turn to 1800 via DCA R-185 to OXONN INT/NDB/DCA 5.6 DME and hold.</p>
---	--------------	--

<p>ATIS</p> <p>132.65</p>	<p>POTOMAC APP CON</p> <p>124.7 338.2</p>	<p>WASHINGTON TOWER</p> <p>119.1 257.6</p>	<p>GND CON</p> <p>121.7 257.6</p>	<p>CLNC DEL</p> <p>128.25</p>
----------------------------------	--	---	--	--------------------------------------



NE-3, 22 OCT 2009 to 19 NOV 2009

NE-3, 22 OCT 2009 to 19 NOV 2009



TDZ/CL Rwy 1
MIRL Rwy 4-22
REIL Rwys 4, 15, 22 and 33
HIRL Rwys 1-19 and 15-33

	BONDS DCA 10	DCA 7	(MADSN) DCA 5	1800 DCA R-185 111.0	DC 332
	3000	2100	1600	(MAKAY) DCA 0.5	VOR/DME
	3 NM			2 NM	
	3 NM			4.5 NM	
	3 NM			0.4	
CATEGORY	A	B	C	D	
S-19	980/60 967 (1000-1¼)	980-1½ 967 (1000-1½)	980-3	967 (1000-3)	
CIRCLING	980-1¼ 965 (1000-1¼)	980-1½ 965 (1000-1½)	980-3	965 (1000-3)	

VOR/DME or GPS RWY 19