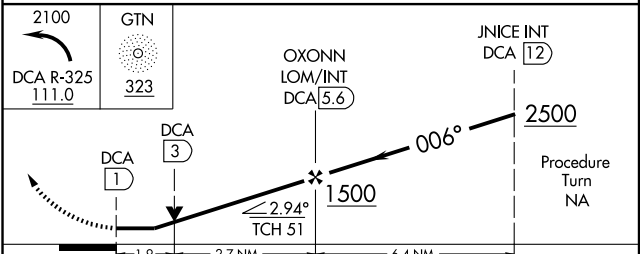
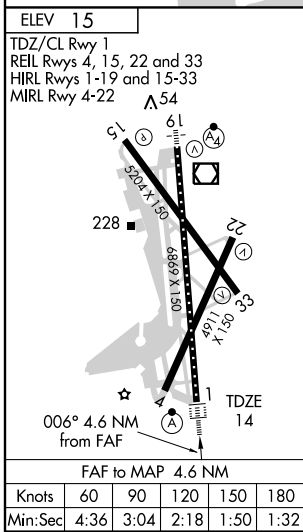
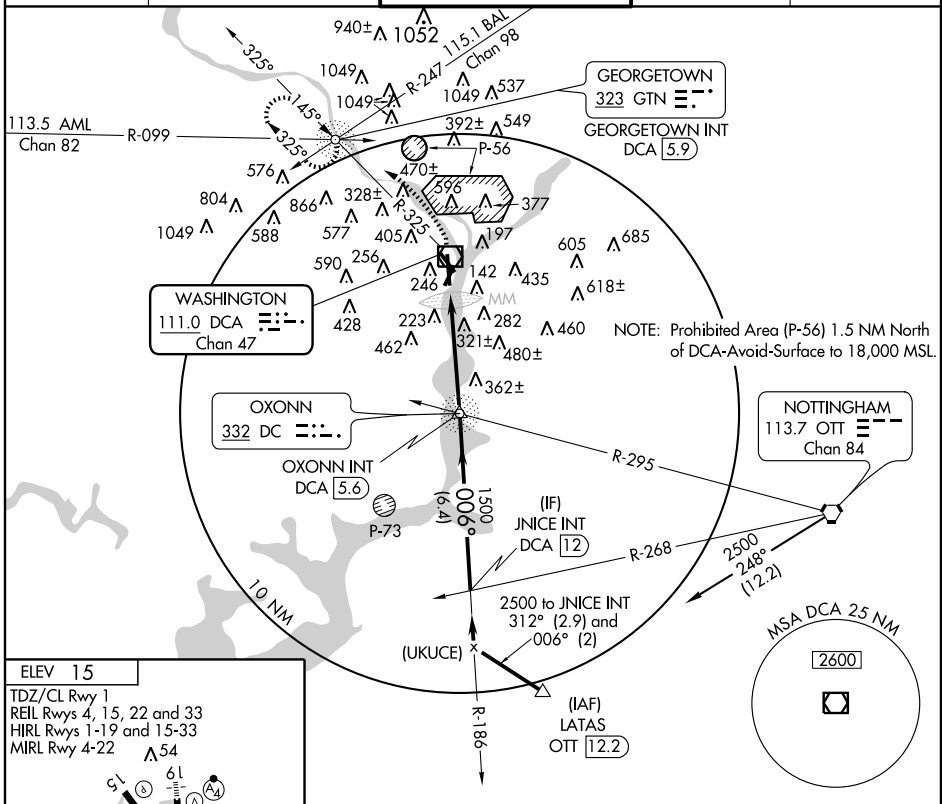


VOR/DME DCA 111.0 Chan 47	APP CRS 006°	Rwy Idg TDZE Apt Elev	6869 14 15
--	------------------------	-----------------------------	---------------------------------------

WASHINGTON/
RONALD REAGAN WASHINGTON NATIONAL (DCA) **VOR RWY 1**

Circling NA NE of Rwy 15-33.	ALSF-2	MISSED APPROACH: Climbing left turn to 2100 via DCA VOR/DME R-325 to GTN NDB/INT/DCA 5.9 DME and hold.
------------------------------	--------	--

ATIS 132.65	POTOMAC APP CON 124.7 338.2	WASHINGTON TOWER 119.1 257.6	GND CON 121.7 257.6	CLNC DEL 128.25
-----------------------	---------------------------------------	--	-------------------------------	---------------------------



CATEGORY	A	B	C	D
S-1	680/24	666 (700-1/2)	680/60 666 (700-1)	680 - 1 1/2 666 (700-1 1/2)
CIRCLING	720 - 1	705 (800-1)	720 - 2 705 (800-2)	760 - 2 1/4 745 (800-2 1/4)

NE-3, 22 OCT 2009 to 19 NOV 2009

NE-3, 22 OCT 2009 to 19 NOV 2009