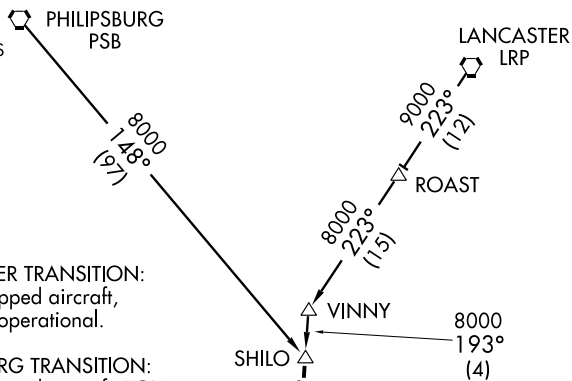


SKILS ONE ARRIVAL (RNAV)

POTOMAC APP CON
128.7 307.9
WASHINGTON NATIONAL ATIS
132.65



NOTE: LANCASTER TRANSITION:
For Non-GPS equipped aircraft,
EMI DME must be operational.

NOTE: PHILIPSBURG TRANSITION:
For Non-GPS equipped aircraft, TON,
SEG, and EMI DMEs must be operational.

8000
193°
(4)

210k 8000
193°
(11)

4000
(20)

Expect to cross
at 12000.

BALTIMORE
BAL
Expect to cross
at 10000.
250K

NAYES

MEGGS

EDDWD

EYESS

BRUNC

FELTY

HITEK

CAVDI

RONALD REAGAN
WASHINGTON NATIONAL

P-56

NOTE: Turbojets Only.

NOTE: RADAR Required.

NOTE: 1. DME/DME/IRU
or GPS required.

2. RNAV 1.

NOTE: PROHIBITED AREA (P-56)
1.5 NM NORTH OF DCA-
AVOID-SURFACE TO
18,000 MSL.

NOTE: Chart not to scale.

ARRIVAL ROUTE DESCRIPTION

LANCASTER TRANSITION (LRP.SKILS1):
PHILIPSBURG TRANSITION (PSB.SKILS1):

From over SHILO via 193° track to SKILS,
then via 193° track to BAL VORTAC,
then via 232° track to EYESS, then via
runway transitions.

LANDING RWY 1: From over EYESS via
228° track to BRUNC, thence as depicted
to CAVDI. Depart CAVDI heading 185°
for vectors to final approach course.

LANDING RWY 19: From over EYESS via
282° track to EDDWD, thence as depicted
to NAYES. Depart NAYES heading 325°
for vectors to final approach course.

SKILS ONE ARRIVAL (RNAV)

NE-3, 22 OCT 2009 to 19 NOV 2009

NE-3, 22 OCT 2009 to 19 NOV 2009