

WASHINGTON, DC

AL-443 (FAA)

RNAV (RNP) RWY 19

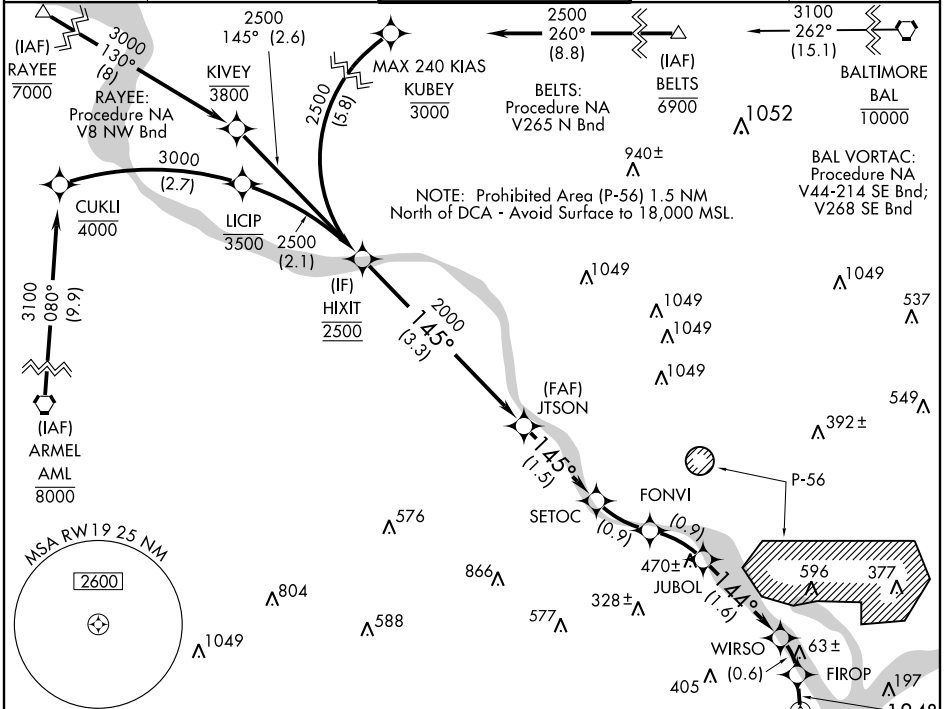
WASHINGTON/ RONALD REAGAN WASHINGTON NATIONAL (DCA)

APP CRS	Rwy Idg	6869
184°	TDZE	13
	Apt Elev	15

NA RF, GPS, and RADAR REQUIRED. For uncompensated Baro-VNAV systems, Procedure NA below -11°C (12°F) or above 49°C (120°F). Inoperative table does not apply. When East Side VGSI inop, Procedure NA.

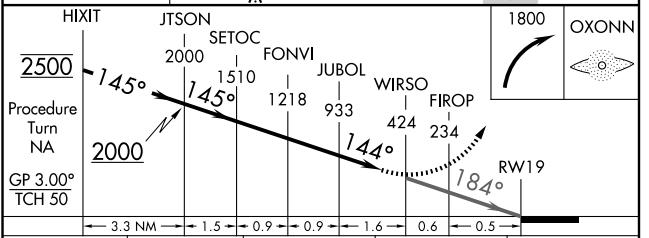
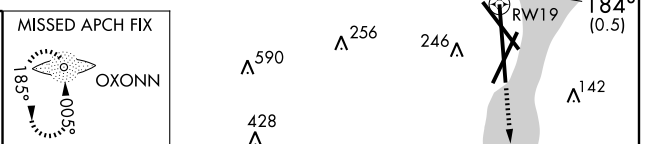
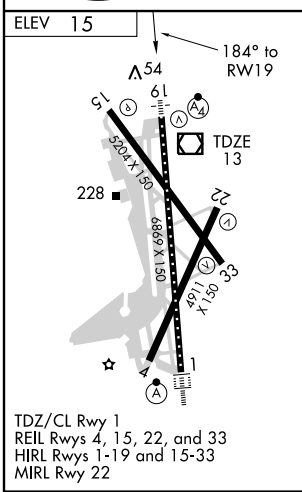
MALSF MISSED APPROACH: Climbing right turn to 1800 direct OXONN and hold.

ATIS	POTOMAC APP CON	WASHINGTON TOWER	GND CON	CLNC DEL
132.65	124.7 338.2	119.1 257.6	121.7 257.6	128.25



NE-3, 22 OCT 2009 to 19 NOV 2009

NE-3, 22 OCT 2009 to 19 NOV 2009



CATEGORY	A	B	C	D
RNP 0.11 DA	475-1½ 462 (500-1½)			

SPECIAL AIRCRAFT & AIRCREW AUTHORIZATION REQUIRED

WASHINGTON, DC
Orig-B 09015

WASHINGTON/ RONALD REAGAN WASHINGTON NATIONAL (DCA)
38°51' N - 77°02' W

RNAV (RNP) RWY 19