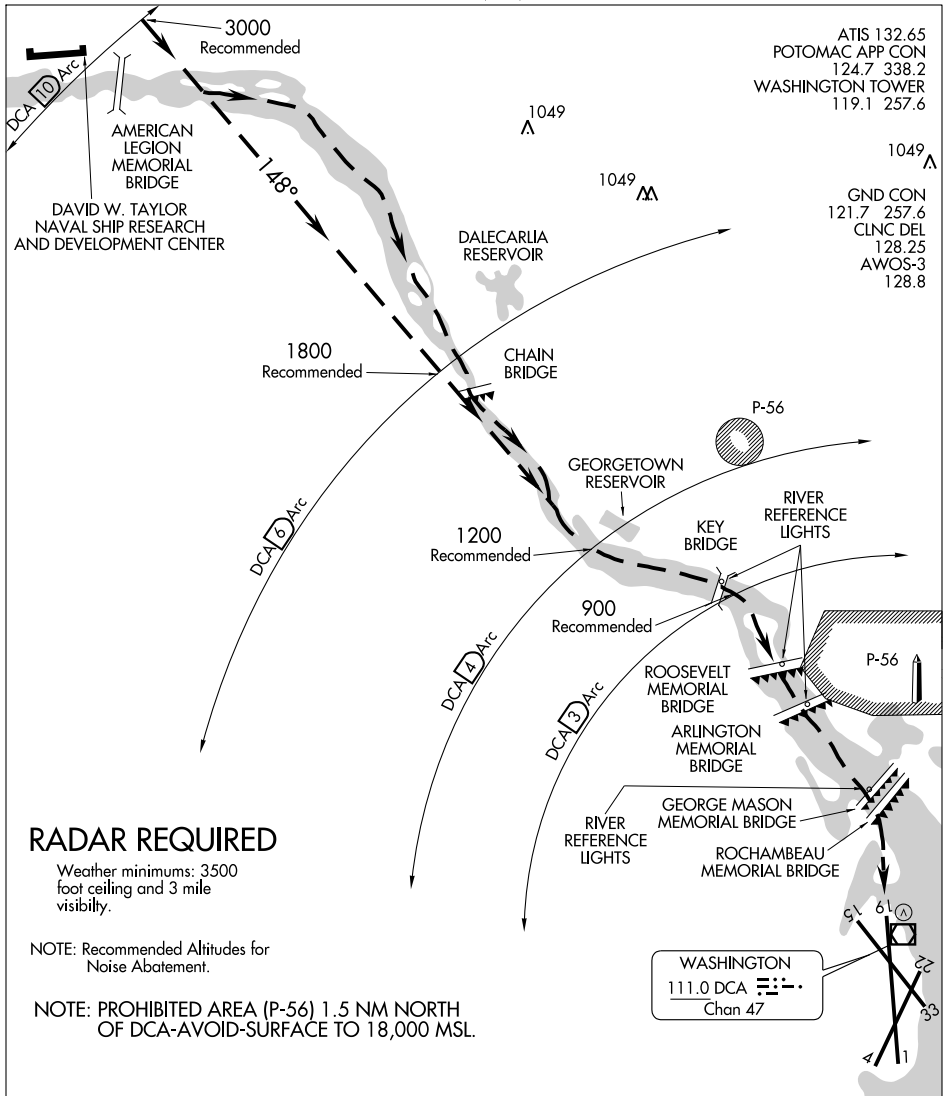


# RIVER VISUAL RWY 19

WASHINGTON/ RONALD REAGAN WASHINGTON NATIONAL (DCA)  
AL-443 (FAA) WASHINGTON, DC



NE-3, 22 OCT 2009 to 19 NOV 2009

NE-3, 22 OCT 2009 to 19 NOV 2009

1 NM	2	3	4	5	6	7
------	---	---	---	---	---	---

## RIVER VISUAL RWY 19

Aircraft may visually follow the river to the airport, or may proceed via the DCA VOR/DME R-328 (148° inbound) or via the Rosslyn LDA Rwy 19 Approach to abeam Georgetown Reservoir or the DCA 4 NM DME fix, then follow the river to the airport.

NOTE: Clearance for visual approach does not authorize penetration of P-56.

# RIVER VISUAL RWY 19