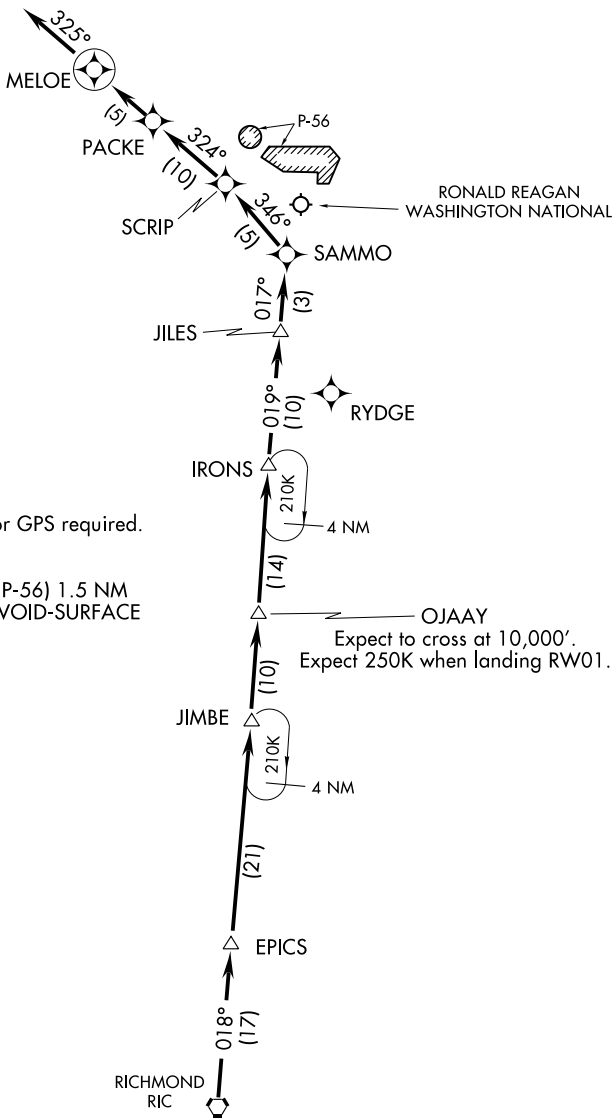


(OJAAY.OJAAY1) 09183

# OJAAY ONE ARRIVAL (RNAV)

ST-443 (FAA)  
WASHINGTON/ RONALD REAGAN WASHINGTON NATIONAL  
WASHINGTON, DC

POTOMAC APP CON  
119.85 322.3  
WASHINGTON NATIONAL ATIS  
132.65



NOTE: RADAR Required.

NOTE: 1. DME/DME/IRU or GPS required.  
2. RNAV 1.

NOTE: PROHIBITED AREA (P-56) 1.5 NM  
NORTH OF DCA-AVOID-SURFACE  
TO 18,000 MSL.

OJAAY  
Expect to cross at 10,000'.  
Expect 250K when landing RW01.

NOTE: Chart not to scale.

## ARRIVAL ROUTE DESCRIPTION

From RIC VORTAC via 018° track to EPICS WP, thence as depicted to MELOE WP, depart MELOE WP heading 325° for vectors to final approach course.

LANDING RWY 1: After IRONS, expect radar vectors to final approach course.

LANDING RWY 19: Depart MELOE WP heading 325° for vectors to final approach

(OJAAY.OJAAY1) 09183

WASHINGTON, DC  
WASHINGTON/ RONALD REAGAN WASHINGTON NATIONAL

NE-3, 22 OCT 2009 to 19 NOV 2009

NE-3, 22 OCT 2009 to 19 NOV 2009