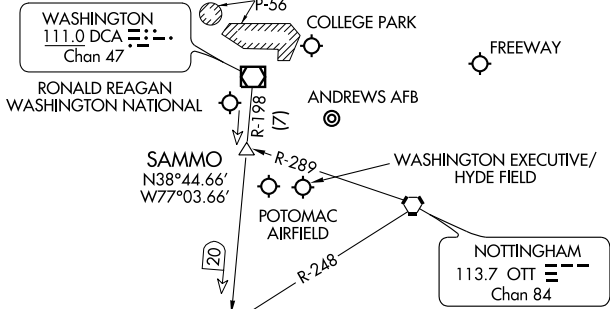


# IRONS FOUR ARRIVAL

WASHINGTON, DC

POTOMAC APP CON  
 119.85 322.3 (DCA ARRIVALS ONLY)  
 128.35 270.275 (ADW ARRIVALS ONLY)  
 ANDREWS AFB ATIS  
 113.1 251.05  
 WASHINGTON NATIONAL ATIS  
 132.65



NOTE: Aircraft use DCA ATIS to determine the direction of landing prior to IRONS INT. (DCA only).

NOTE: PROHIBITED AREA (P-56) 1.5 NM NORTH OF DCA-AVOID-SURFACE TO 18,000 MSL.

OJAAY  
 N38°17.56'  
 W77°09.38'

**TURBOJET VERTICAL NAVIGATION PLANNING INFORMATION**  
 (DCA only)

Expect to cross at 10,000 feet (and expect 250 kts in a North operation).

JIMBE  
 N38°07.68'  
 W77°11.44'

EPICS  
 N37°47.15'  
 W77°15.82'

FLAT ROCK  
 113.3 FAK  
 Chan 80

HARCUM  
 108.8 HCM  
 Chan 25

RICHMOND  
 114.1 RIC  
 Chan 88  
 N37°30.14' - W77°19.22'

L-34-36, H-10-12

NOTE: Chart not to scale.

**RICHMOND TRANSITION (RIC.IRONS4):** From over RIC VORTAC via RIC R-018 and DCA R-198 to IRONS INT. Thence . . .

. . . From over IRONS INT:

Ronald Reagan Washington National Airport (DCA only):

LANDING SOUTH: Then via DCA R-198 to SAMMO INT, heading for vectors to the final approach course.

LANDING NORTH: Expect vectors to final approach course.

All other airports: Expect vectors.

NE-3, 22 OCT 2009 to 19 NOV 2009

NE-3, 22 OCT 2009 to 19 NOV 2009

# IRONS FOUR ARRIVAL

WASHINGTON, DC