

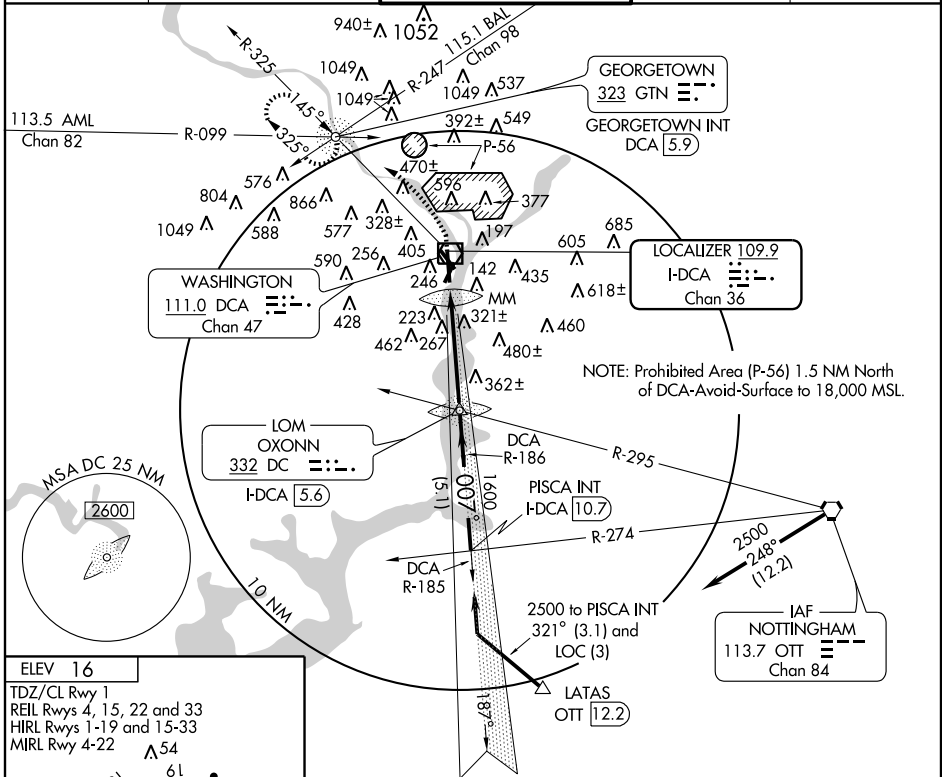
ILS RWY 1

LOC/DME I-DCA	APP CRS	Rwy Idg	6869
109.9	007°	TDZE	15
Chan 36		Apt Elev	16

WASHINGTON/RONALD REAGAN WASHINGTON NATIONAL (DCA)

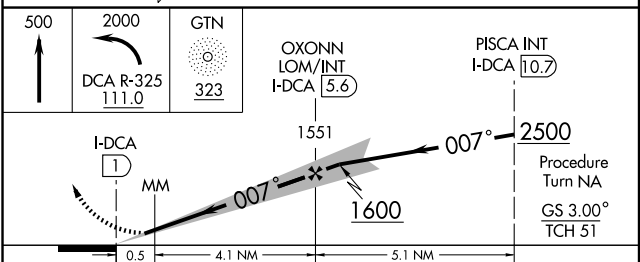
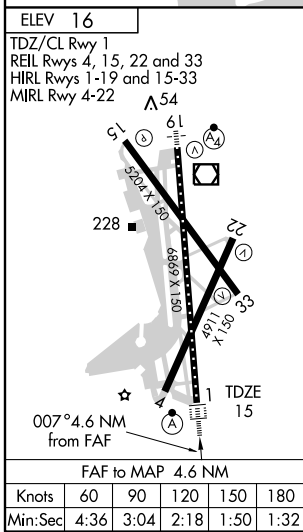
<p>⚠ Circling Cat C and D not authorized northeast of Rwy 15-33.</p> <p>⚠ Use I-DCA DME when on the LOC course.</p>	<p>ALSF-2</p>	<p>MISSED APPROACH: Climb to 500, then climbing left turn to 2000 via DCA R-325 to GTN NDB/Int/DCA 5.9 DME and hold.</p>
---	---------------	--

ATIS 132.65	POTOMAC APP CON 124.7 338.2	WASHINGTON TOWER 119.1 257.6	GND CON 121.7 257.6	CLNC DEL 128.25
-----------------------	---------------------------------------	--	-------------------------------	---------------------------



NE-3, 22 OCT 2009 to 19 NOV 2009

NE-3, 22 OCT 2009 to 19 NOV 2009



CATEGORY	A	B	C	D
S-ILS 1	215/18 200 (200-½)			
S-LOC 1	480/24	465 (500-½)	480/40 465 (500-¾)	480/50 465 (500-1)
CIRCLING	620-1 604 (700-1)	660-1 644 (700-1)	660-1¾ 644 (700-1¾)	700-2¼ 684 (700-2¼)