

(CLIPR.CLIPR1) 09071

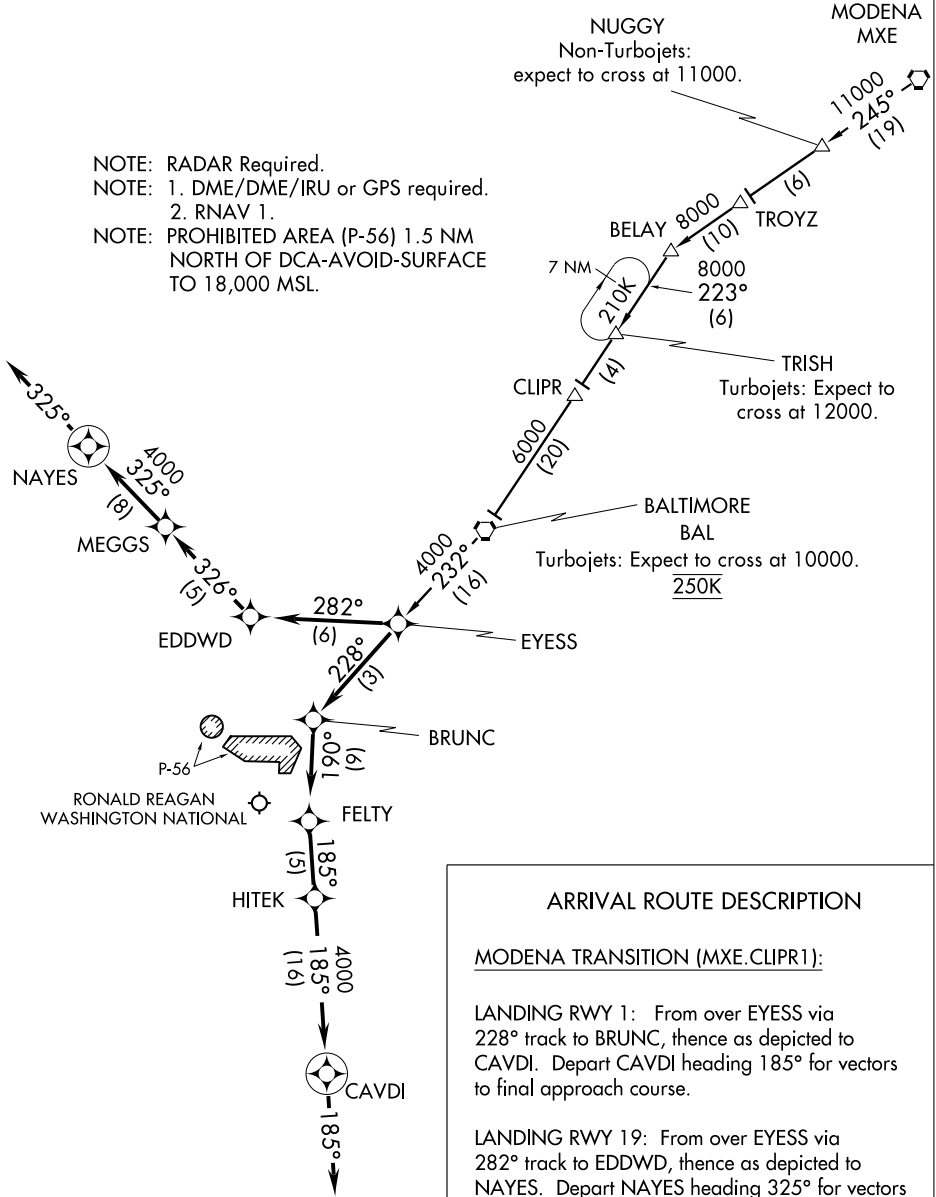
CLIPR ONE ARRIVAL (RNAV)

ST-443 (FAA)

WASHINGTON/ RONALD REAGAN WASHINGTON NATIONAL
WASHINGTON, DC

POTOMAC APP CON
128.7 307.9
WASHINGTON NATIONAL ATIS
132.65

- NOTE: RADAR Required.
- NOTE: 1. DME/DME/IRU or GPS required.
2. RNAV 1.
- NOTE: PROHIBITED AREA (P-56) 1.5 NM NORTH OF DCA-AVOID-SURFACE TO 18,000 MSL.



NE-3, 22 OCT 2009 to 19 NOV 2009

NE-3, 22 OCT 2009 to 19 NOV 2009

ARRIVAL ROUTE DESCRIPTION

MODENA TRANSITION (MXE.CLIPR1):

LANDING RWY 1: From over EYESS via 228° track to BRUNC, thence as depicted to CAVDI. Depart CAVDI heading 185° for vectors to final approach course.

LANDING RWY 19: From over EYESS via 282° track to EDDWD, thence as depicted to NAYES. Depart NAYES heading 325° for vectors to final approach course..

NOTE: Chart not to scale.

CLIPR ONE ARRIVAL (RNAV)

(CLIPR.CLIPR1) 09071

WASHINGTON, DC
WASHINGTON/ RONALD REAGAN WASHINGTON NATIONAL