


WARNER ROBINS, GEORGIA

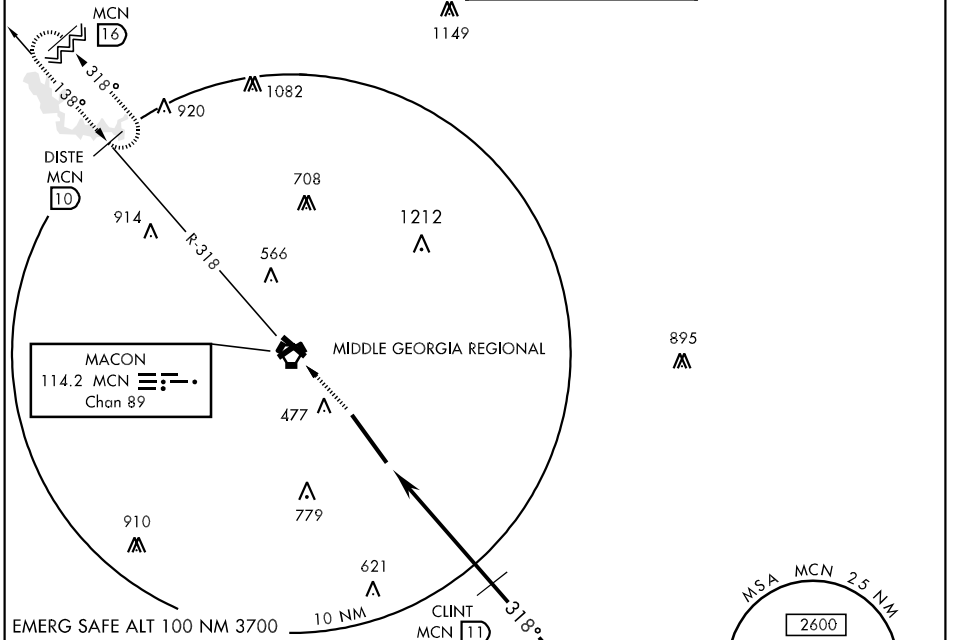
VOR/DME Z RWY 33

VORTAC MCN 114.2 Chan 89	APCH CRS 318°	Rwy Idg TDZE 12,001 Arpt Elev 294	AL-442 [USAF]	ROBINS AFB (KWRB)
---------------------------------------	-------------------------	---	---------------	-------------------

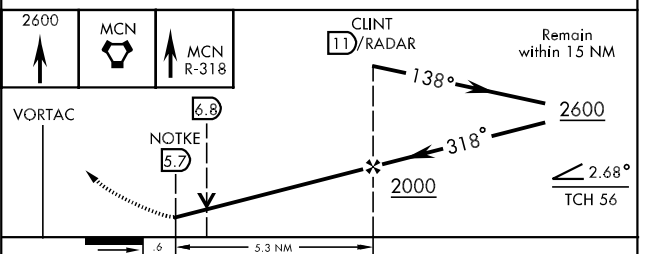
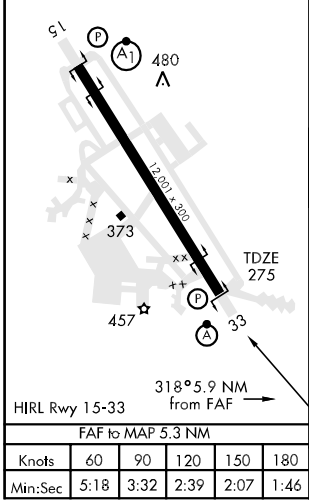
* When ALS inop, increase CAT AB RVR to 50 and vis to 1 mile, CAT CD vis to 1½ miles, CAT E vis to 1¾ miles.
 ** Circling not authorized W of Rwy 15-33.

ALSF-2  MISSED APPROACH: To 2600 to MCN VORTAC then out MCN R-318 to DISTE and hold.

ATIS 119.475 233.4	ATLANTA APP CON 124.2 279.6	ROBINS TOWER 133.225 320.1	GND CON 121.85 275.8
------------------------------	---------------------------------------	--------------------------------------	--------------------------------



EMERG SAFE ALT 100 NM 3700
 ELEV 294



CATEGORY	A	B	C	D	E
S-33 *	780/24 505 (500-½)		780/50 505 (500-1)		780/60 505 (500-1½)
CIRCLING **	780-1 486 (500-1)		780-1½ 486 (500-1½)	860-2 566 (600-2)	960-2½ 666 (700-2½)

WARNER ROBINS, GEORGIA 32°38'N-83°36'W ROBINS AFB (KWRB)
 Orig 09127

VOR/DME Z RWY 33

SE-4, 22 OCT 2009 to 19 NOV 2009

SE-4, 22 OCT 2009 to 19 NOV 2009