

WARNER ROBINS, GEORGIA

VOR/DME or TACAN RWY 33

VORTAC MCN 114.2 Chan 89	APCH CRS 318°	Rwy Idg TDZE Arpt Elev 12,001 275 294
---------------------------------------	-------------------------	---

AL-442 [USAF]

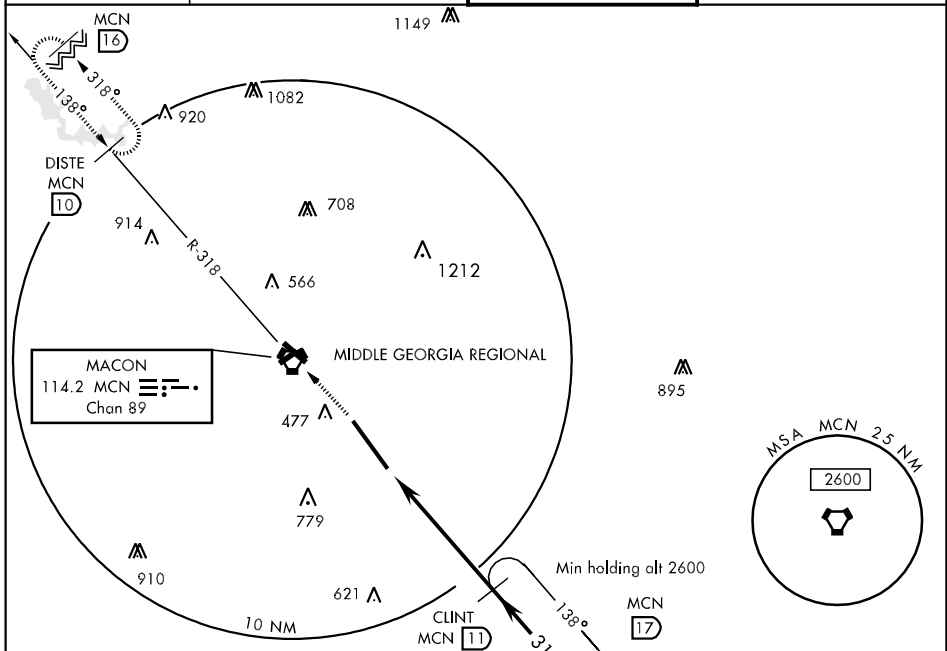
ROBINS AFB (KWRB)

* When ALS inop, increase CAT AB RVR to 50 and vis to 1 mile, CAT CD vis to 1½ miles, CAT E vis to 1¾ miles.
 ** Circling not authorized W of Rwy 15-33.



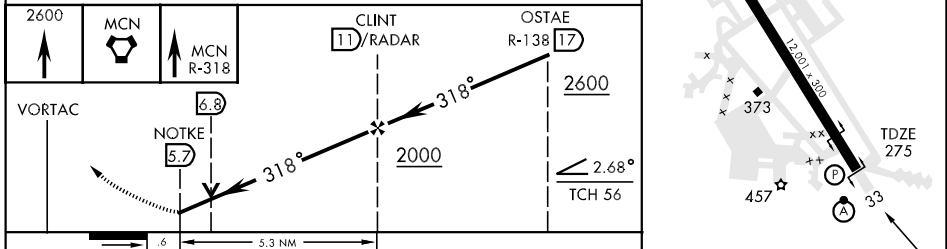
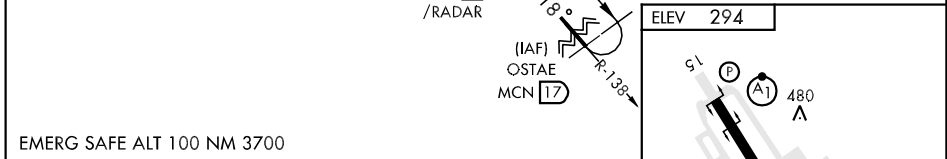
MISSED APPROACH: To 2600 to MCN VORTAC then out MCN R-318 to DISTE and hold.

ATIS 119.475 233.4	ATLANTA APP CON 124.2 279.6	ROBINS TOWER 133.225 320.1	GND CON 121.85 275.8
------------------------------	---------------------------------------	--------------------------------------	--------------------------------



SE-4, 22 OCT 2009 to 19 NOV 2009

SE-4, 22 OCT 2009 to 19 NOV 2009



CATEGORY	A	B	C	D	E
S-33*	780/24 505 (500-½)		780/50 505 (500-1)		780/60 505 (500-1¼)
CIRCLING**	780-1 486 (500-1)		780-1½ 486 (500-1½)	860-2 566 (600-2)	960-2¼ 666 (700-2¼)

HIRL Rwy 15-33					
FAF to MAP 5.3 NM					
Knots	60	90	120	150	180
Min:Sec	5:18	3:32	2:39	2:07	1:46

WARNER ROBINS, GEORGIA
 Amtd 3 09127

32°38'N-83°36'W

ROBINS AFB (KWRB)

VOR/DME or TACAN RWY 33