

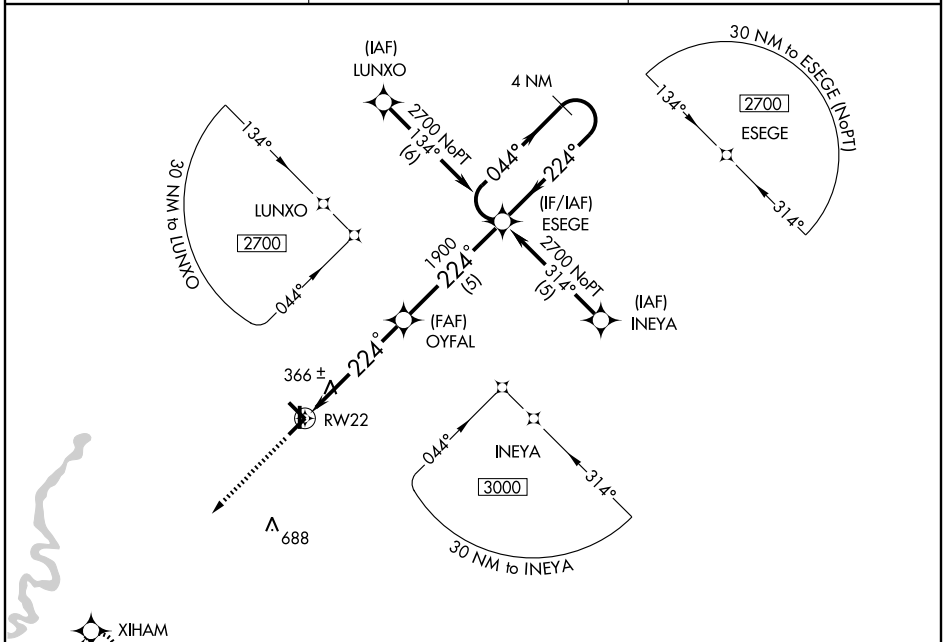
# RNAV (GPS) RWY 22

WALNUT RIDGE RGNL (ARG)

APP CRS <b>224°</b>	Rwy Idg <b>6001</b>
	TDZE <b>273</b>
	Apt Elev <b>279</b>

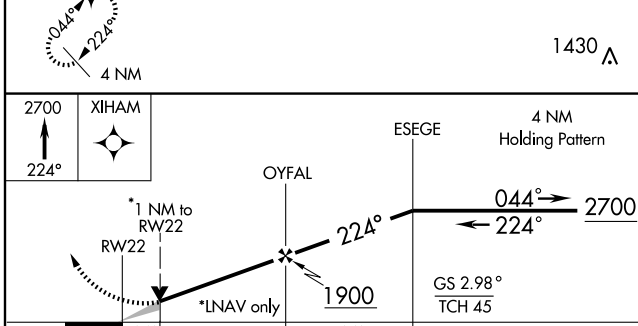
**NA** DME/DME RNP - 0.3 NA. For uncompensated Baro-VNAV systems, LNAV/VNAV NA below -15° C (5° F) or above 50°C (122°F). MISSED APPROACH: Climb to 2700 via 224° course to XIHAM and hold.

AWOS-3 <b>135.925</b>	MEMPHIS CENTER <b>120.075 289.4</b>	UNICOM <b>122.8 (CTAF)</b>
--------------------------	--	-------------------------------



SC-1, 22 OCT 2009 to 19 NOV 2009

SC-1, 22 OCT 2009 to 19 NOV 2009



CATEGORY	A	B	C	D
GLS PA DA	NA			
LNAV/VNAV DA	633-1¼	360 (400-1¼)		
LNAV MDA	620-1	347 (400-1)	620-1¼	347 (400-1¼)
CIRCLING	760-1	481 (500-1)	760-1½	840-2
			481 (500-1½)	561 (600-2)

