

# RNAV (GPS) RWY 18

WALNUT RIDGE RGNL (A.R.G)

APP CRS <b>179°</b>	Rwy Idg <b>5001</b>
	TDZE <b>273</b>
	Apt Elev <b>279</b>

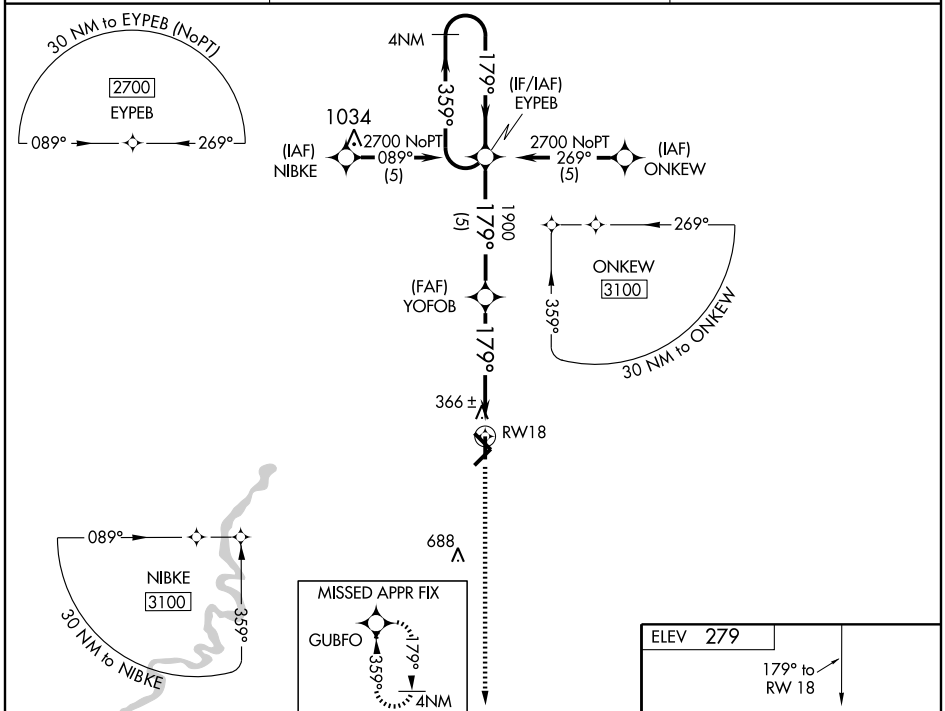
**NA**  
 Inoperative table does not apply to LNAV/VNAV.  
 Inoperative table does not apply to LNAV Cat D.  
 GPS or RNP-0.3 REQUIRED. DME/DME RNP-0.3 NA.  
 BARO-VNAV NA below-1.5.55°C (4°F)

**ODALS**  
 ...  
**MISSED APPROACH:** Climb to 3100 direct GUBFO and hold.

AWOS-3  
**135.925**

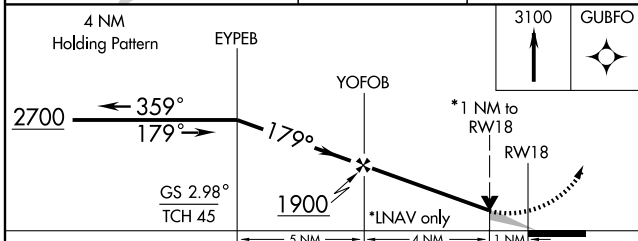
MEMPHIS CENTER  
**120.075 289.4**

UNICOM  
**122.8 (CTAF)**



SC-1, 22 OCT 2009 to 19 NOV 2009

SC-1, 22 OCT 2009 to 19 NOV 2009



CATEGORY	A	B	C	D
GLS PA DA	NA			
LNAV/ VNAV DA	620-1¼		347 (400-1¼)	
LNAV MDA	620-¾		347 (400-¾)	
CIRCLING	760-1¼		840-2	
	481 (500-1¼)	481 (500-1½)		561 (600-2)

