


# RNAV (GPS) RWY 20

WALLA WALLA RGNL (ALW)

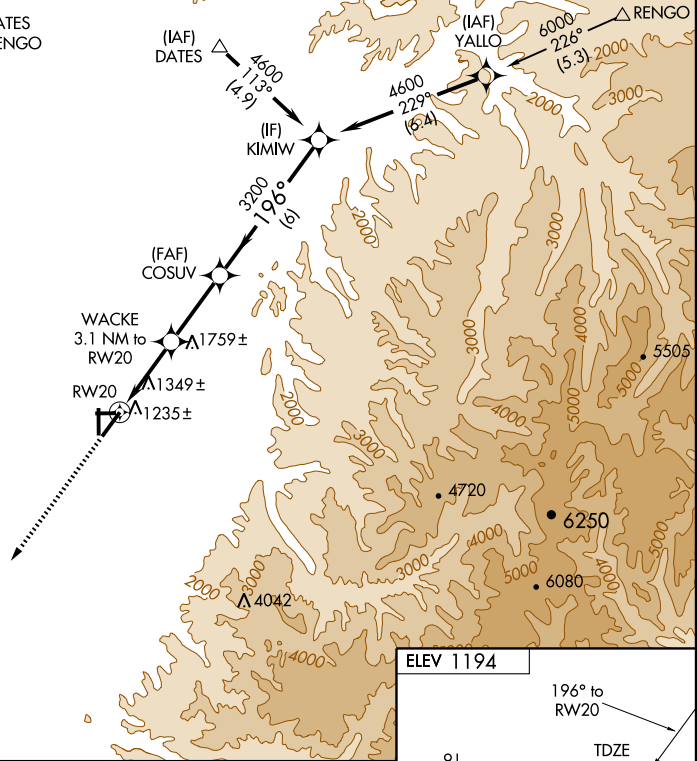
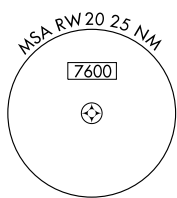
WAAS CH <b>90299</b> <b>W20A</b>	APP CRS <b>196°</b>	Rwy Idg TDZE <b>6527</b> 1194 Apt Elev <b>1194</b>
--	------------------------	---

**▼** DME/DME RNP-0.3 NA.  
**▲** Baro-VNAV NA below -17°C (2°F).  
 For inoperative MALSR, increase LPV visibility all Cats to RVR 4000.

**MALSR**  MISSED APPROACH: Climb to 4000 direct PACON and hold.

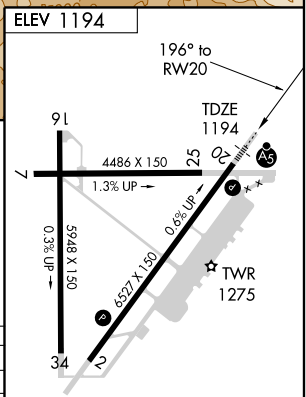
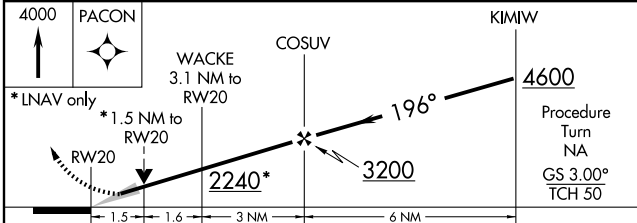
ASOS <b>135.875</b>	CHINOOK APP CON * <b>133.15 379.15</b>	WALLA WALLA TOWER * <b>118.5 (CTAF) 0 289.4</b>	GND CON <b>121.6 289.4</b>
------------------------	---	--	-------------------------------

Procedure NA for arrivals at DATES via V444 northbound and at RENGO via V536 northeast bound.




NW-1, 22 OCT 2009 to 19 NOV 2009

NW-1, 22 OCT 2009 to 19 NOV 2009



CATEGORY	A	B	C	D
LPV DA		1444/24	250 (300-½)	
LNAV/VNAV DA		1694/60	500 (500-1¼)	
LNAV MDA	1720/24	526 (600-½)	1720/50 526 (600-1)	1720/60 526 (600-1¼)
CIRCLING	1760-1¾	566 (600-1¾)	1820-1¾ 626 (700-1¾)	1980-2½ 786 (800-2½)

REIL Rwy 2   
 HIRL Rwy 2-20 