

RNAV (GPS) RWY 2

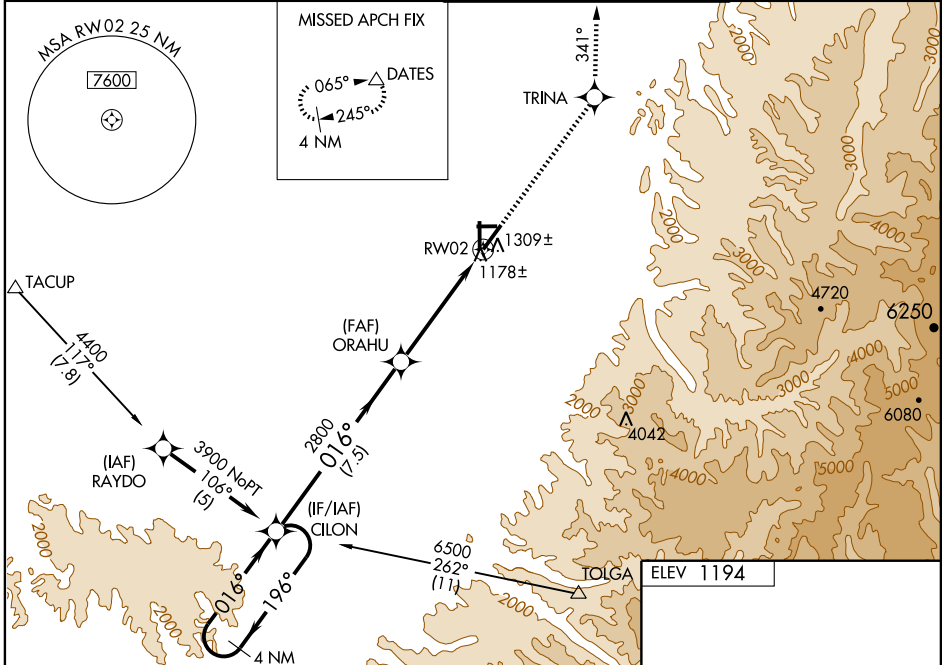
WALLA WALLA RGNL (ALW)

WAAS CH 72805 W02A	APP CRS 016°	Rwy Idg TDZE Apt Elev	6527 1173 1194
--	------------------------	-----------------------------	---

▽ DME/DME RNP-0.3 NA.
▲ For uncompensated Baro-VNAV systems, LNAV/VNAV NA below -17°C (2°F) or above 46°C (114°F).
 When local altimeter setting not received, use Pendleton altimeter setting and increase all DAs/MDAs 120 feet and LPV visibilities ¼ mile, LNAV/VNAV visibilities ½ mile, LNAV Cats. C/D visibility ¼ mile, and Circling Cat. C/D visibility ½ mile.
 VDP and Baro-VNAV NA when using Pendleton altimeter setting.

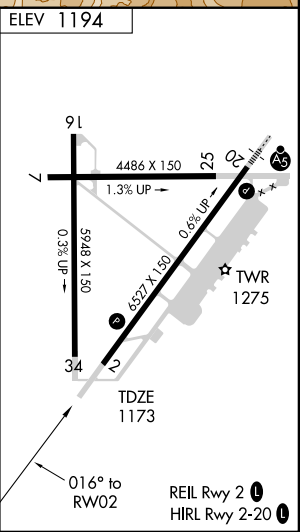
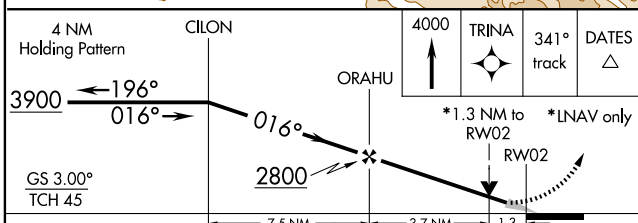
MISSED APPROACH: Climb to 4000 direct TRINA and via 341° track to DATES and hold.

ASOS 135.875	CHINOOK APP CON * 133.15 379.15	WALLA WALLA TOWER * 118.5 (CTAF) 0 289.4	GND CON 121.6 289.4
------------------------	---	--	-------------------------------



NW-1, 22 OCT 2009 to 19 NOV 2009

NW-1, 22 OCT 2009 to 19 NOV 2009



CATEGORY	A	B	C	D
LPV DA	1423-1 250 (300-1)			
LNAV/VNAV DA	1612-1½ 439 (500-1½)			
LNAV MDA	1620-1 447 (500-1)	1620-1¼ 447 (500-1½)	1620-1½ 447 (500-1½)	1620-1½ 447 (500-1½)
CIRCLING	1760-1 566 (600-1)	1820-1¾ 626 (700-1¾)	1980-2½ 786 (800-2½)	