

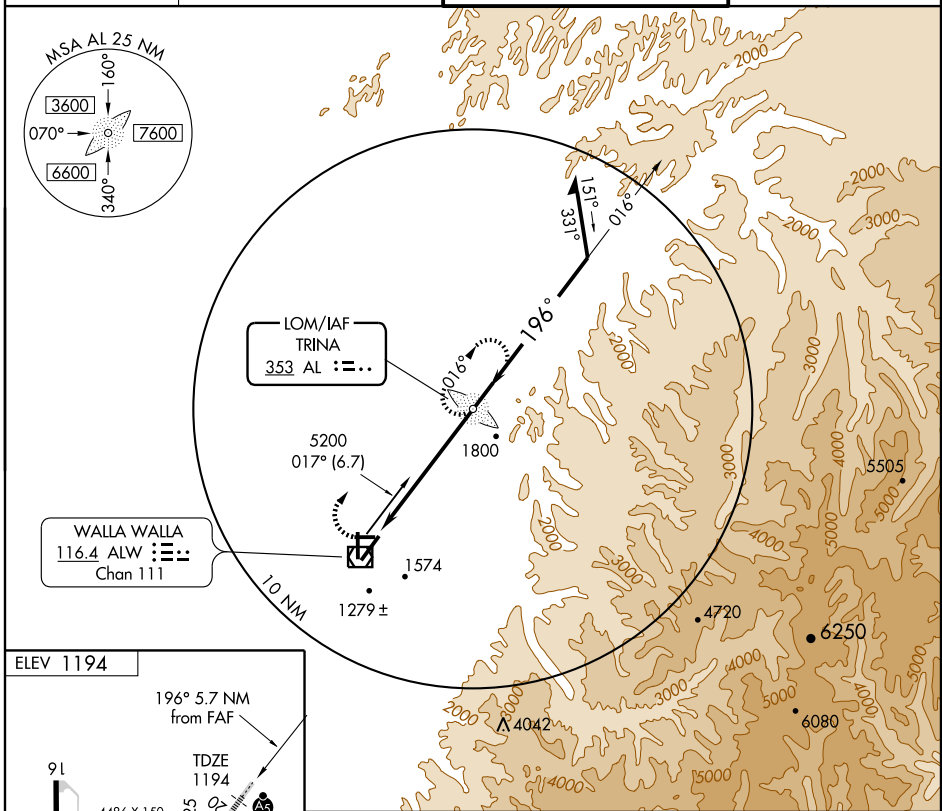
NDB RWY 20

WALLA WALLA RGNL (ALW)

LOM AL 353	APP CRS 196°	Rwy Idg TDZE Apt Elev	6527 1194 1194
----------------------	------------------------	-----------------------------	---

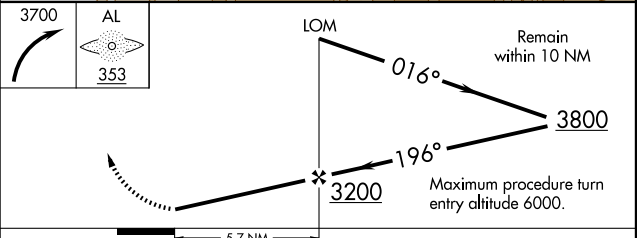
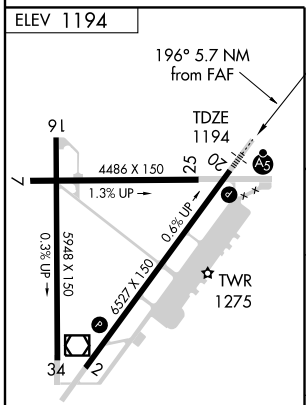
	Cat. A and B S-20 visibility increased ½ mile for inoperative ALSF-1.		MISSED APPROACH: Climbing right turn to 3700 direct TRINA LOM and hold.
--	--	--	--

ASOS 135.875	CHINOOK APP CON * 133.15 379.15	WALLA WALLA TOWER * 118.5 (CTAF) 0 289.4	GND CON 121.6 289.4
------------------------	---	--	-------------------------------



NW-1, 22 OCT 2009 to 19 NOV 2009

NW-1, 22 OCT 2009 to 19 NOV 2009



FAF to MAP 5.7 NM					
Knots	60	90	120	150	180
Min:Sec	5:42	3:48	2:51	2:17	1:54
CATEGORY	A	B	C	D	
S-20	2200/40 1006 (1100-¾)	2200/50 1006 (1100-1)	2200-2½ 1006 (1100-2½)	2200-2¾ 1006 (1100-2¾)	
CIRCLING	2200-1¼ 1006 (1100-1¼)	2200-1½ 1006 (1100-1½)	2200-3	1006 (1100-3)	