

ILS or LOC RWY 19

WACO RGNL (ACT)

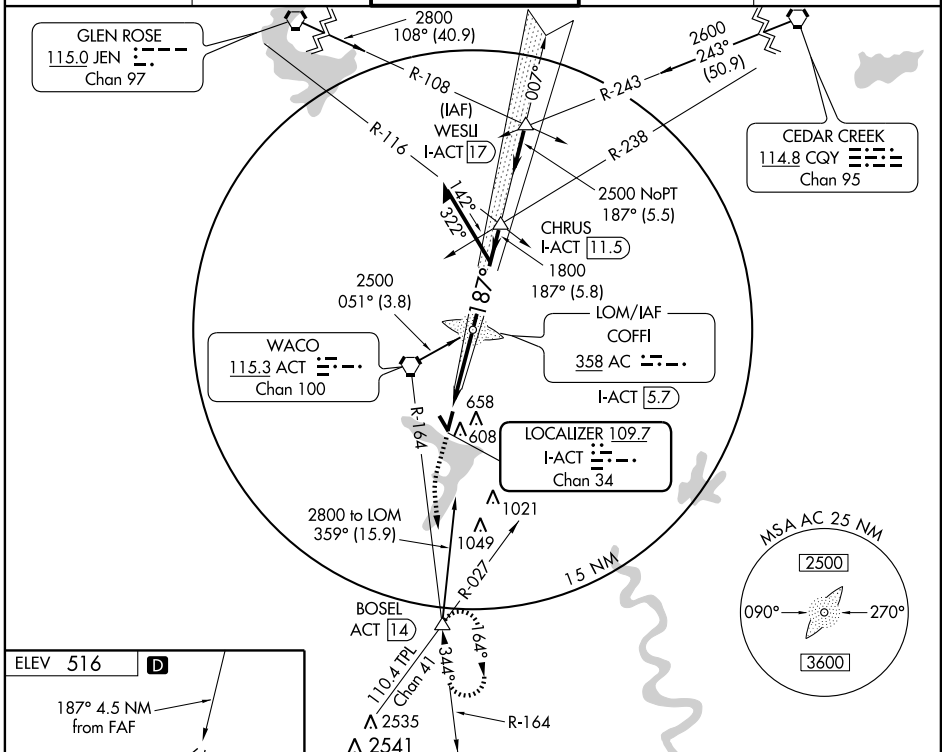
LOC I-ACT 109.7 Chan 34	APP CRS 187°	Rwy Idg TDZE Apt Elev	6596 505 516
--------------------------------------	------------------------	-----------------------------	---

▲ For inoperative MALS, increase S-LOC 19 Cat D visibility to RVR 5000.
ASR * RVR 1800 authorized with the use of FD or AP or HUD to DA.



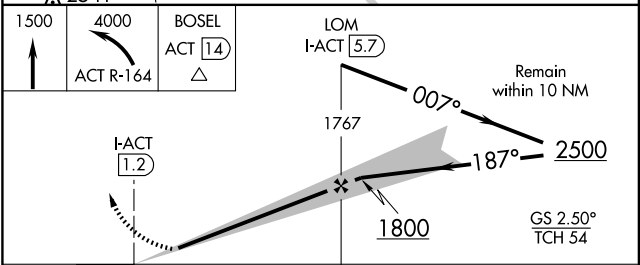
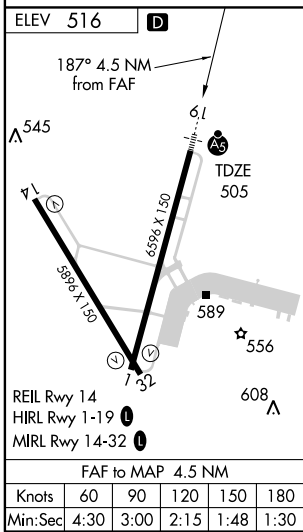
MISSED APPROACH: Climb to 1500 then climbing left turn to 4000 via ACT R-164 to BOSEL INT/14 DME and hold.

ATIS 123.85	WACO APP CON * 135.2 227.125	WACO TOWER * 119.3 (CTAF) 257.8	GND CON 121.9	UNICOM 122.95
-----------------------	--	---	-------------------------	-------------------------



SC-3, 22 OCT 2009 to 19 NOV 2009

SC-3, 22 OCT 2009 to 19 NOV 2009



CATEGORY	A	B	C	D
S-ILS 19	* 705/24 200 (200-½)			
S-LOC 19	800/24 295 (300-½)			800/40 295 (300-¾)
CIRCLING	920-1 404 (500-1)	980-1 464 (500-1)	980-1½ 464 (500-1½)	1080-2 564 (600-2)