

WACO, TEXAS

AL-439 (FAA)

# GPS RWY 32

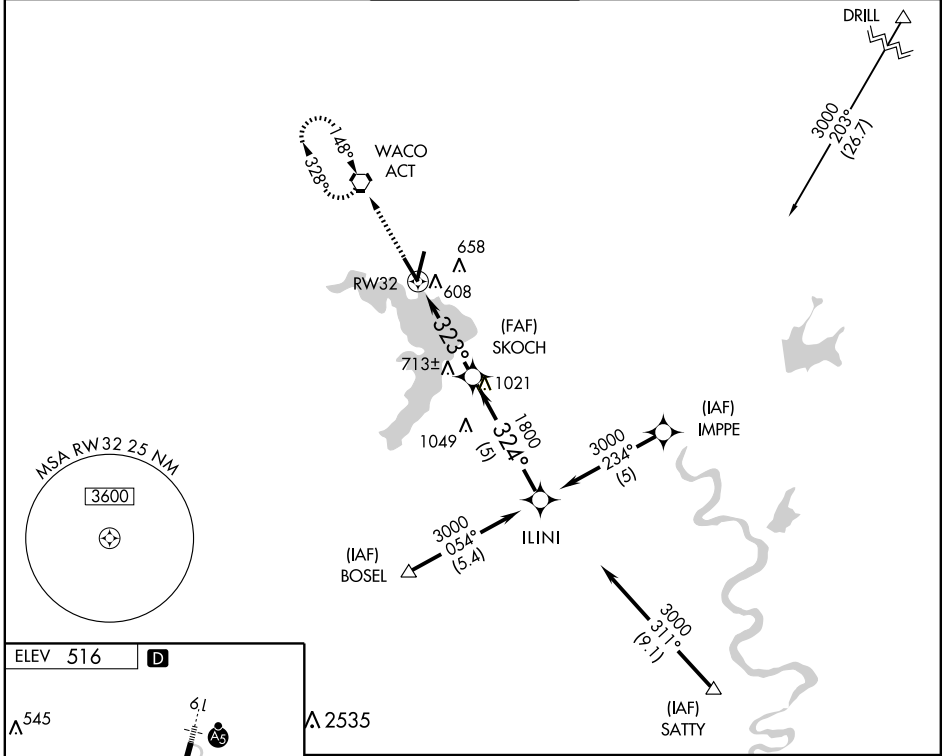
WACO RGNL (ACT)

APP CRS	Rwy Idg	<b>5896</b>
<b>323°</b>	TDZE	<b>516</b>
	Apt Elev	<b>516</b>

**▲ NA**  
ASR

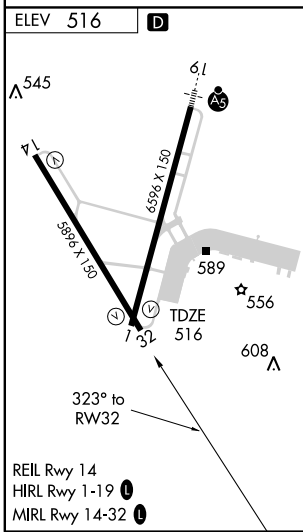
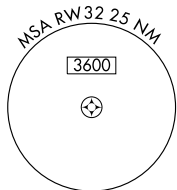
MISSED APPROACH: Climb to 3000 direct ACT VORTAC and hold.

ATIS <b>123.85</b>	WACO APP CON * <b>135.2 227.125</b>	WACO TOWER * <b>119.3 (CTAF) 257.8</b>	GND CON <b>121.9</b>	UNICOM <b>122.95</b>
-----------------------	--	---	-------------------------	-------------------------



SC-3, 22 OCT 2009 to 19 NOV 2009

SC-3, 22 OCT 2009 to 19 NOV 2009



3000	ACT			
		1.9 NM to RW32	SKOCH	ILINI
		0.9 NM to RW32	323°	324°
		1160	1800	3000
		0.9	2.97° TCH 59	
		1NM	2NM	5 NM
CATEGORY	A	B	C	D
S-32	860-1	344 (400-1)		860-1¼ 344 (400-1¼)
CIRCLING	920-1 404 (500-1)	980-1 464 (500-1)	980-1½ 464 (500-1½)	1080-2 564 (600-2)

WACO, TEXAS  
Orig-A 09015

31°37'N-97°14'W

# WACO RGNL (ACT)

## GPS RWY 32