

WACO, TEXAS

AL-439 (FAA)

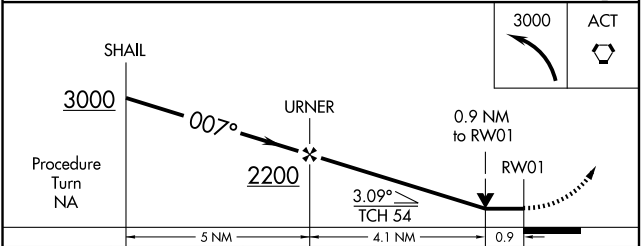
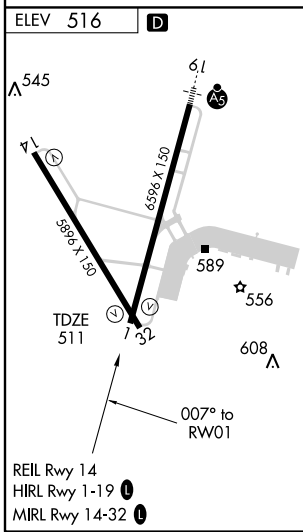
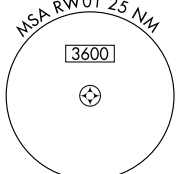
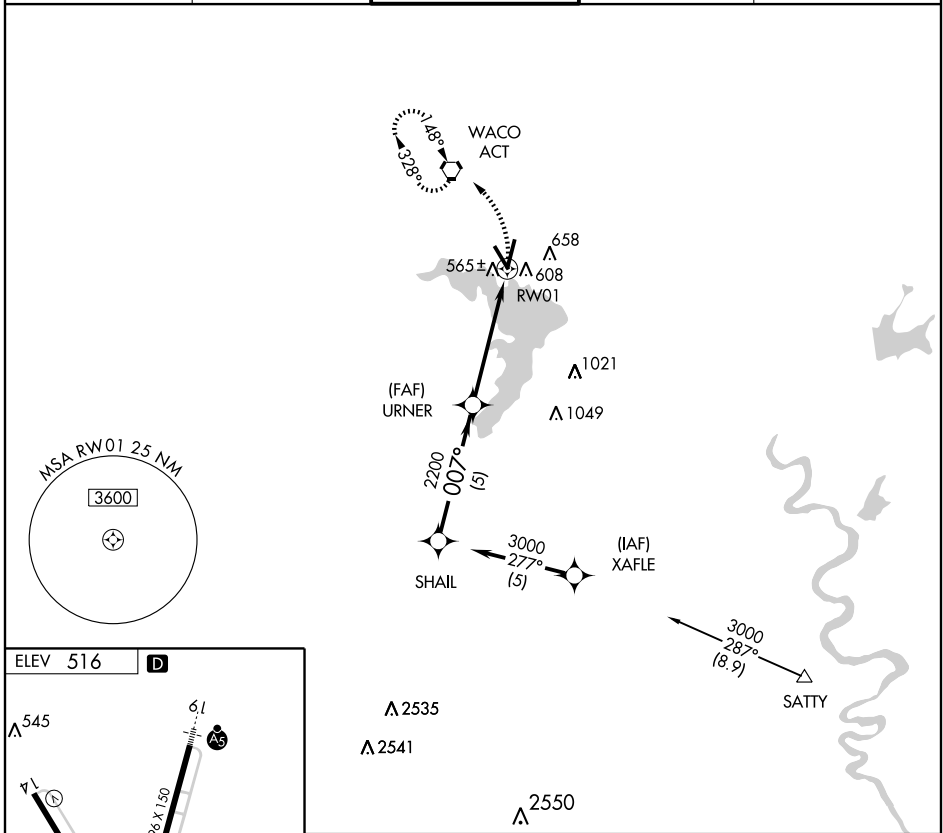
# GPS RWY 1 WACO RGNL (ACT)

APP CRS	Rwy Idg	<b>6596</b>
<b>007°</b>	TDZE	<b>511</b>
	Apt Elev	<b>516</b>

**▲ NA**  
ASR

MISSED APPROACH: Climbing left turn to 3000 direct ACT VORTAC and hold.

ATIS <b>123.85</b>	WACO APP CON * <b>135.2 227.125</b>	WACO TOWER * <b>119.3 (CTAF) 257.8</b>	GND CON <b>121.9</b>	UNICOM <b>122.95</b>
-----------------------	--	---	-------------------------	-------------------------



CATEGORY	A	B	C	D
S-1		840-1	329 (400-1)	
CIRCLING	920-1 404 (500-1)	980-1 464 (500-1)	980-1½ 464 (500-1½)	1080-2 564 (600-2)

WACO, TEXAS  
Orig-B 09015

31°37'N-97°14'W

# WACO RGNL (ACT) GPS RWY 1

SC-3, 22 OCT 2009 to 19 NOV 2009

SC-3, 22 OCT 2009 to 19 NOV 2009