

RNAV (GPS) RWY 30R

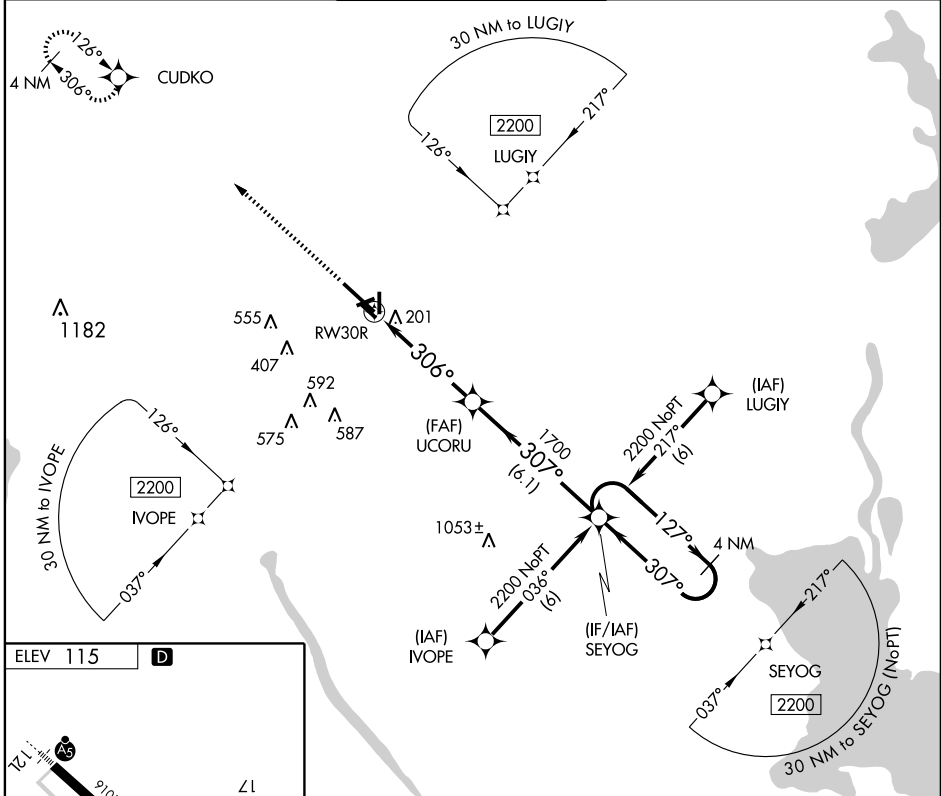
VICTORIA RGNL (VCT)

APP CRS 306°	Rwy Idg 9101
	TDZE 106
	Apt Elev 115

⚠ DME/DME RNP-0.3 NA. VDP NA when using Port Lavaca altimeter setting.
⚠ When local altimeter setting not received, use Port Lavaca altimeter setting and increase all MDA 60 feet, increase LNAV Cat E visibility ¼ mile.

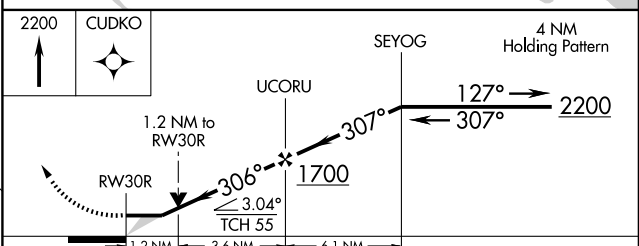
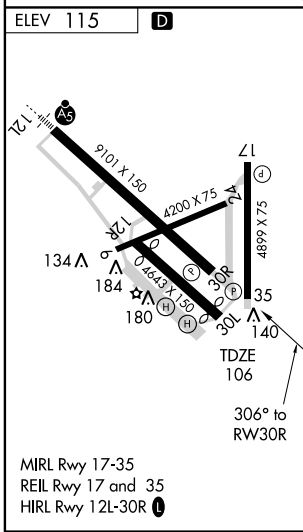
MISSED APPROACH: Climb to 2200 direct CUDKO and hold.

ATIS 119.025	HOUSTON CENTER 135.05 353.6	VICTORIA TOWER ★ 126.075 (CTAF) 257.95	GND CON 120.525 239.25	UNICOM 122.7
------------------------	---------------------------------------	--	----------------------------------	------------------------



SC-5, 22 OCT 2009 to 19 NOV 2009

SC-5, 22 OCT 2009 to 19 NOV 2009



CATEGORY	A	B	C	D	E
LNAV MDA	540-1	434 (500-1)	540-1½ 434 (500-1¼)	540-1½	434 (500-1½)
CIRCLING	540-1 425 (500-1)	580-1 465 (500-1)	580-1½ 465 (500-1½)	680-2 565 (600-2)	NA