


ILS or LOC RWY 12L

VICTORIA RGNL (VCT)

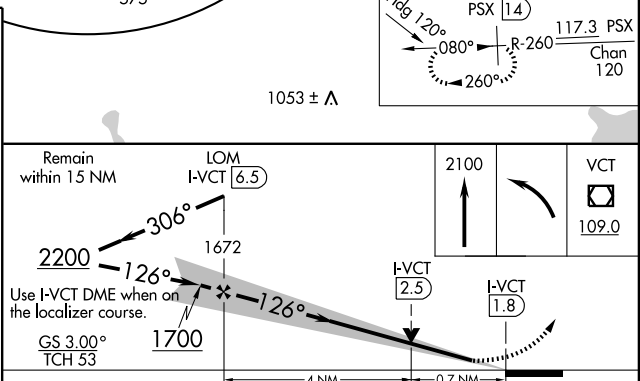
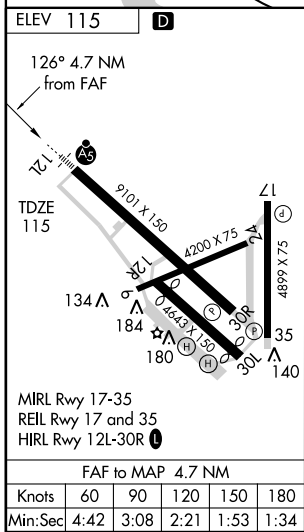
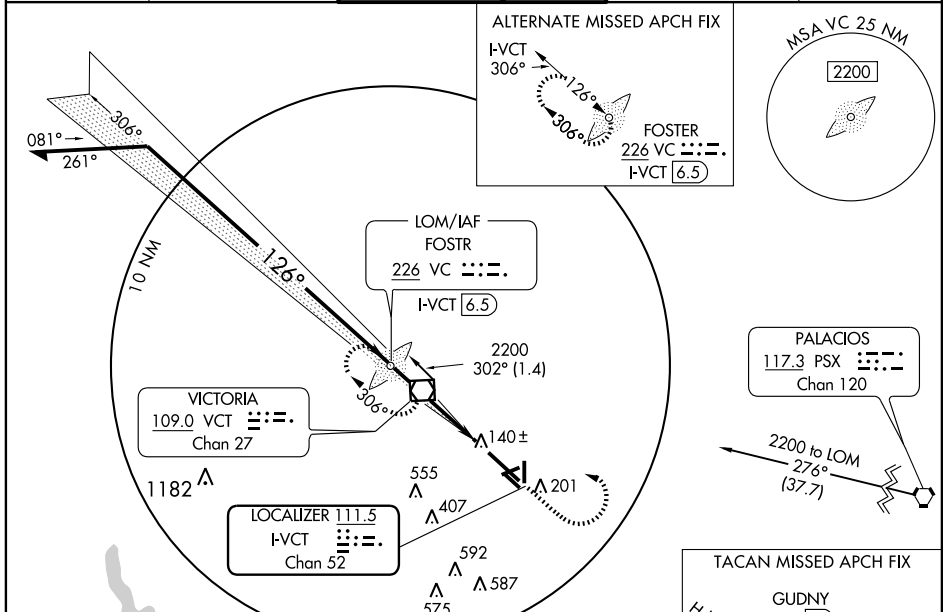
LOC/DME I-VCT 111.5 Chan 52	APP CRS 126°	Rwy Idg 9101 TDZE 115 Apt Elev 115
---	------------------------	---

▼ For inoperative MALS, increase S-LOC 12L Cat D and E visibility to 1 mile and S-ILS Cat E visibility to ¾ mile. VDP NA when using Port Lavaca altimeter setting. For inoperative MALS when using Port Lavaca altimeter setting, increase S-LOC 12L Cat E visibility to 1¼ mile. When local altimeter setting not received, use Port Lavaca altimeter setting and increase DA 52 feet and all MDA 60 feet.

MALS


MISSED APPROACH: Climb to 2100 then left turn direct VCT VOR/DME and hold. (TACAN aircraft climb to 2100 via heading 120° and PSX VORTAC R-260 to GUDNY/14 DME and hold W, RT, 080° inbound.)

ATIS 119.025	HOUSTON CENTER 135.05 353.6	VICTORIA TOWER * 126.075 (CTAF) 257.95	GND CON 120.525 239.25	UNICOM 122.7
------------------------	---------------------------------------	--	----------------------------------	------------------------



CATEGORY	A	B	C	D	E
S-ILS 12L	315-½ 200 (200-½)				
S-LOC 12L	400-½ 285 (300-½)		400-¾ 285 (300-¾)		
CIRCLING	520-1 405 (500-1)	580-1 465 (500-1)	580-1½ 465 (500-1½)	680-2 565 (600-2)	NA

SC-5, 22 OCT 2009 to 19 NOV 2009

SC-5, 22 OCT 2009 to 19 NOV 2009