

# RNAV (GPS) RWY 4

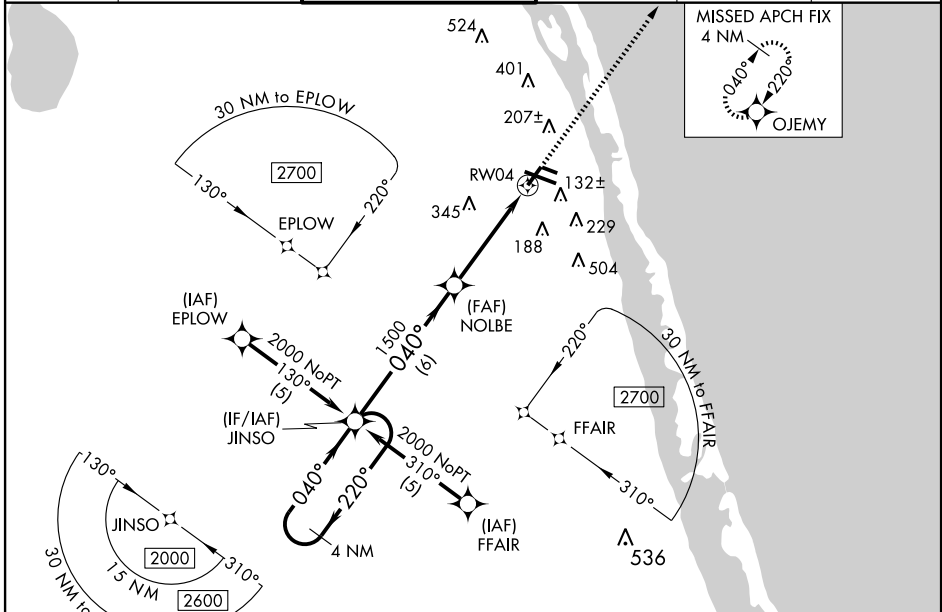
VERO BEACH MUNI (VRB)

WAAS CH <b>61311</b> <b>W04A</b>	APP CRS <b>040°</b>	Rwy Idg TDZE Apt Elev	<b>4975</b> <b>24</b> <b>24</b>
--	------------------------	-----------------------------	---------------------------------------

Baro-VNAV NA when using Fort Pierce altimeter setting. For uncompensated Baro-VNAV systems, LNAV/VNAV NA below -15° C (5° F) or above 48° C (118° F). DME/DME RNP-0.3 NA.  
 Procedure NA at night. Visibility reduction by helicopters NA. When local altimeter setting not received, use Fort Pierce altimeter setting and increase all DA 23 feet and all MDA 40 feet, increase LPV and LNAV/VNAV all Cats. and Circling Cat. D visibilities ¼ mile.

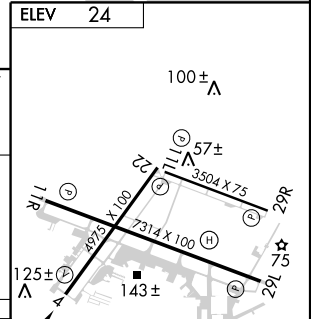
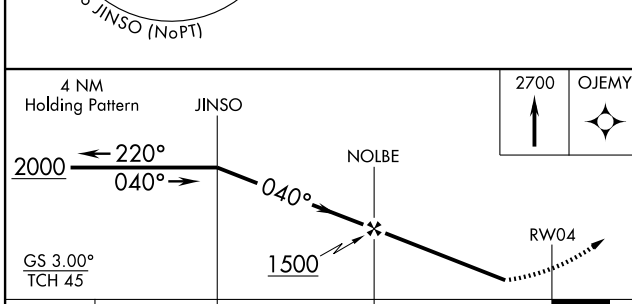
MISSED APPROACH:  
Climb to 2700 direct OJEMY and hold.

ATIS <b>132.5</b>	MIAMI CENTER <b>132.25 370.9</b>	VERO BEACH TOWER * <b>126.3 (CTAF) 0</b>	GND CON <b>127.45</b>	CLNC DEL <b>134.975</b>	UNICOM <b>122.95</b>
----------------------	-------------------------------------	---	--------------------------	----------------------------	-------------------------



SE-3, 22 OCT 2009 to 19 NOV 2009

SE-3, 22 OCT 2009 to 19 NOV 2009



CATEGORY	A	B	C	D
LPV DA	323-1 299 (300-1)			
LNAV/VNAV DA	395-1¼ 371 (400-1¼)			
LNAV MDA	460-1	436 (500-1)	460-1¼ 436 (500-1¼)	460-1½ 436 (500-1½)
CIRCLING	560-1	536 (600-1)	560-1½ 536 (600-1½)	660-2 636 (700-2)

MIRL Rwy 4-22 and 11L-29R  
 REIL Rwy 11R and 29L  
 MIRL Rwy 11R-29L  
 REIL Rwy 4 and 22