

# RNAV (GPS) RWY 29L

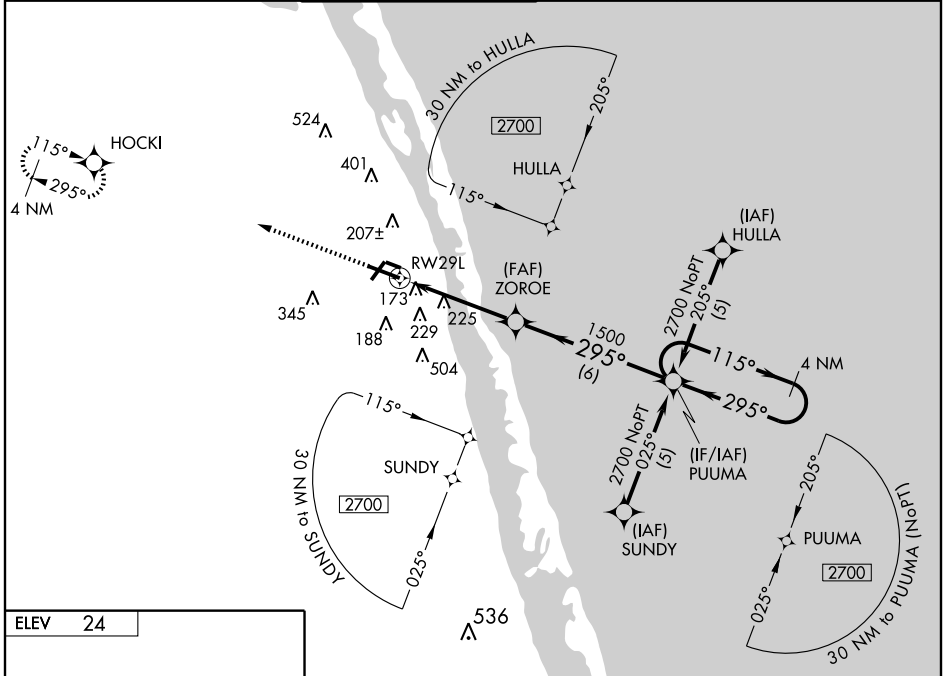
VERO BEACH MUNI (VRB)

WAAS CH <b>69411</b> <b>W29A</b>	APP CRS <b>295°</b>	Rwy Idg TDZE Apt Elev	<b>7314</b> <b>22</b> <b>24</b>
--	------------------------	-----------------------------	---------------------------------------

Baro-VNAV NA when using Fort Pierce altimeter setting. For uncompensated Baro-VNAV systems, LNAV/VNAV NA below -15° C (5° F) or above 48° C (118° F). DME/DME RNP-0.3 NA. VDP NA when using Fort Pierce altimeter setting. When local altimeter setting not received, use Fort Pierce altimeter setting and increase all DA 23 feet and all MDA 40 feet and Circling Cat. D visibility ¼ mile.

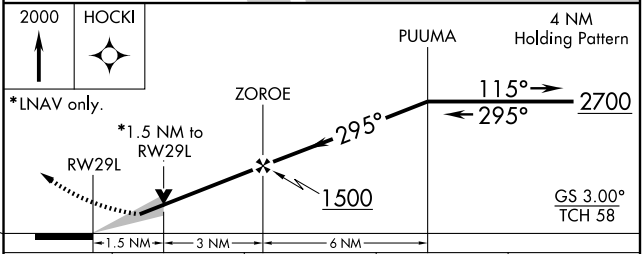
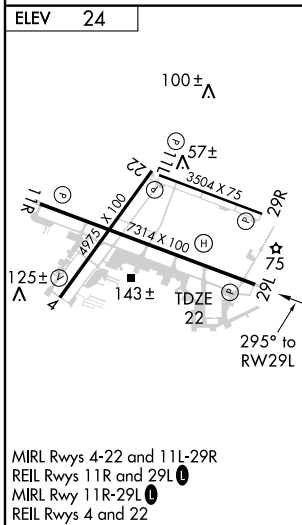
**MISSED APPROACH:**  
Climb to 2000 direct HOCKI and hold.

ATIS <b>132.5</b>	MIAMI CENTER <b>132.25 370.9</b>	VERO BEACH TOWER * <b>126.3 (CTAF) 0</b>	GND CON <b>127.45</b>	CLNC DEL <b>134.975</b>	UNICOM <b>122.95</b>
----------------------	-------------------------------------	---	--------------------------	----------------------------	-------------------------



SE-3, 22 OCT 2009 to 19 NOV 2009

SE-3, 22 OCT 2009 to 19 NOV 2009



CATEGORY	A	B	C	D
LPV DA	293-1 271 (300-1)			
LNAV/VNAV DA	526-1¾ 504 (600-1¾)			
LNAV MDA	540-1 518 (600-1)	540-1½ 518 (600-1½)	540-1¾ 518 (600-1¾)	
CIRCLING	560-1 536 (600-1)	560-1½ 536 (600-1½)	660-2 636 (700-2)	