

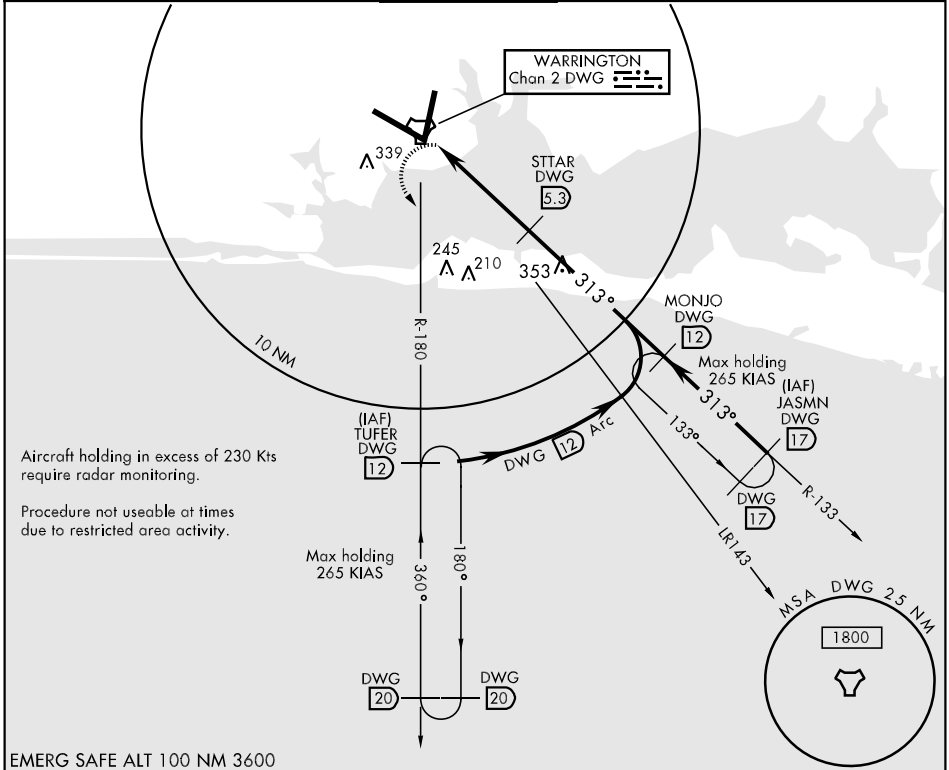
TACAN DWG Chan 2	APCH CRS 313°	Rwy Idg 12,005 TDZE 74 Arprt Elev 87	AL-436 [USAF]	EGLIN AFB (KVPS)
---------------------	------------------	---	---------------	------------------

*When ALS inop, increase CAT AB RVR to 50 and vis to 1 mile, CAT C RVR to 60 and vis 1¼ miles, CAT DE vis to 1½ miles.

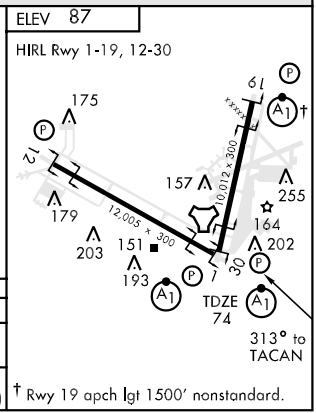
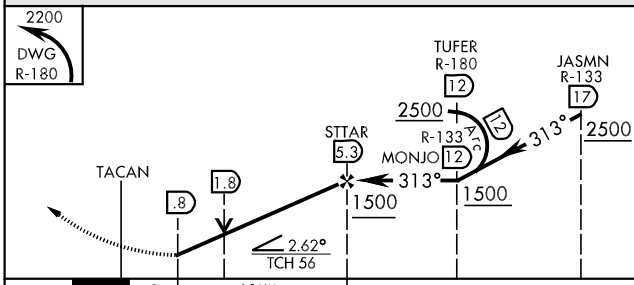
ALS F-1 (A1)

MISSED APPROACH: Climbing left turn to 2200 direct DWG R-180/12 DME (TUFER) and hold.

ATIS ★ 134.625 273.5	EGLIN APP CON 125.1 281.45 271°-089° 132.1 360.6 090°-270°	EGLIN TOWER 118.2 353.65	GND CON 121.8 335.8	CLNC DEL 127.7 377.2
-------------------------	--	-----------------------------	------------------------	-------------------------



EMERG SAFE ALT 100 NM 3600



CATEGORY	A	B	C	D	E
S-30 *	520/24 446 (500-½)		520/40 446 (500-¾)	520/50 446 (500-1)	
CIRCLING	580-1 493 (500-1)		580-1½ 493 (500-1½)	700-2 613 (700-2)	700-2¼ 613 (700-2¼)

SE-3, 22 OCT 2009 to 19 NOV 2009

SE-3, 22 OCT 2009 to 19 NOV 2009