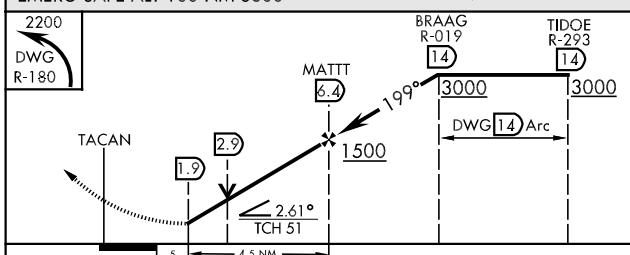
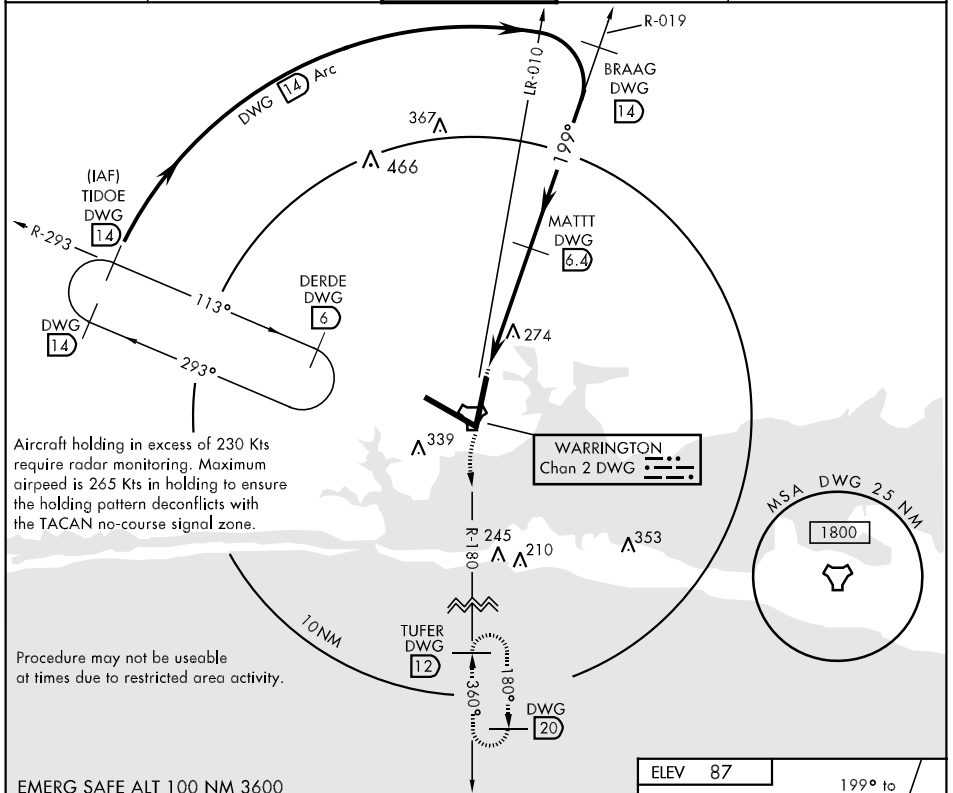


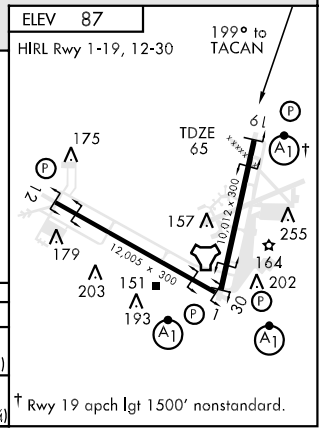
TACAN DWG Chan 2	APCH CRS 199°	Rwy Idg 10,012 TDZE 65 Arprt Elev 87	AL-436 [USAF]	EGLIN AFB (KVPS)
---------------------	------------------	--	---------------	------------------

\* When ALS inop, increase CAT AB RVR to 50 and vis to 1 mile, CAT C RVR to 60 and vis to 1¼ miles, CAT DE increase vis by ½ mile.

ATIS * 134.625 273.5	EGLIN APP CON 125.1 281.45 271°-089° 132.1 360.6 090°-270°	EGLIN TOWER 118.2 353.65	GND CON 121.8 335.8	CLNC DEL 127.7 377.2
-------------------------	--	-----------------------------	------------------------	-------------------------



CATEGORY	A	B	C	D	E
5-19 *	540/24	475 (500-½)	540/40 475(500-¾)	540/50 475(500-1)	540/60 475(500-1¼)
CIRCLING	580-1	493 (500-1)	580-1½ 493(500-1½)	700-2 613 (700-2)	700-2¼ 613 (700-2¼)



SE-3, 22 OCT 2009 to 19 NOV 2009

SE-3, 22 OCT 2009 to 19 NOV 2009

† Rwy 19 apch lgt 1500' nonstandard.