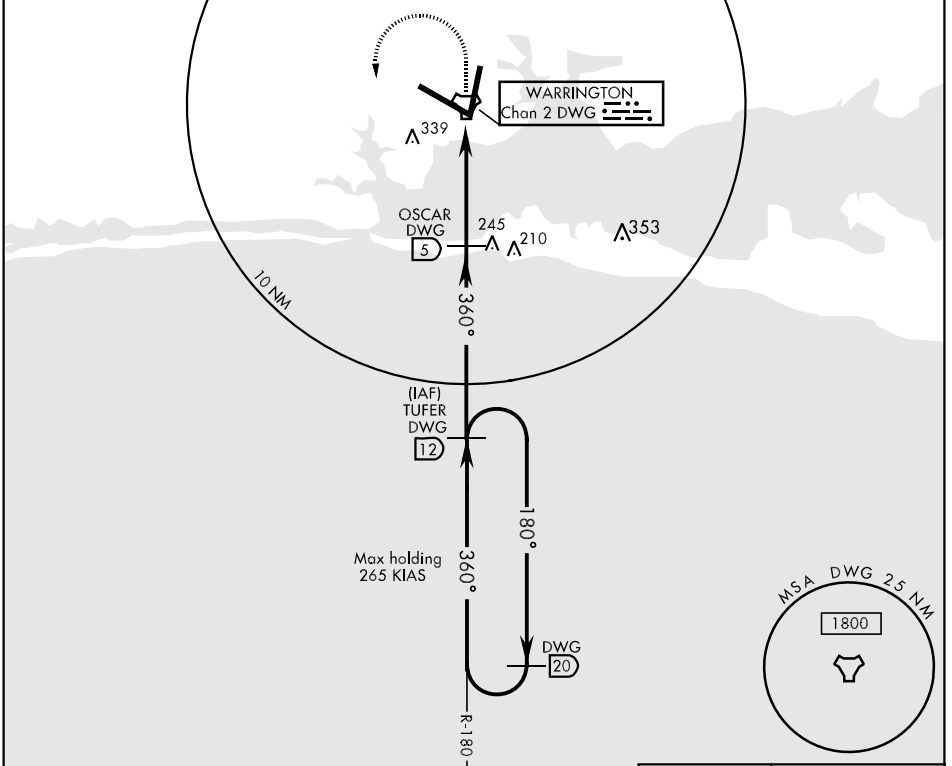


TACAN DWG Chan 2	APCH CRS 360°	Rwy ldg TDZE 10,012 65 Arprt Elev 87	AL-436 [USAF]	EGLIN AFB (KVPS)
---------------------	------------------	--	---------------	------------------

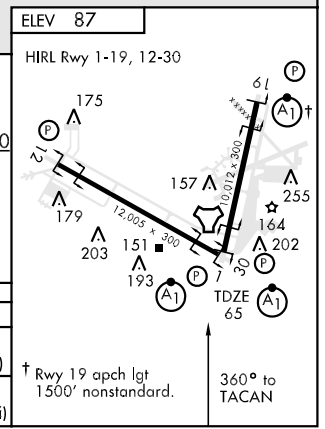
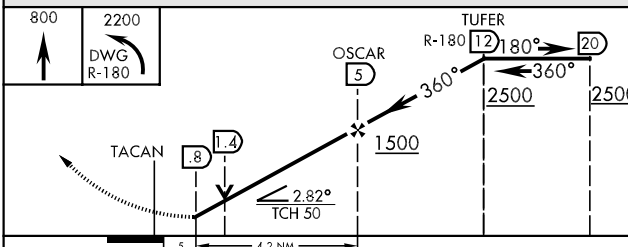
\*When ALS inop, incr CAT ABC RVR to 50 and vis to 1 mile, CAT D RVR to 60 and vis to 1¼ miles, CAT E vis to 1½ miles.

MISSED APPROACH: Climb to 800 then climbing left turn to 2200 direct DWG R-180/12 DME (TUFER) and hold.

ATIS ★ 134.625 273.5	EGLIN APP CON 125.1 281.45 271°-089° 132.1 360.6 090°-270°	EGLIN TOWER 118.2 353.65	GND CON 121.8 335.8	CLNC DEL 127.7 377.2
-------------------------	--	-----------------------------	------------------------	-------------------------



EMERG SAFE ALT 100 NM 3600



CATEGORY	A	B	C	D	E
S-1 *	460/24	396 (400-½)	460/40	396 (400-¾)	460/50 396 (400-1)
CIRCLING	580-1	493 (500-1)	580-1½ 493 (500-1½)	700-2 613 (700-2)	700-2¼ 613 (700-2¼)

SE-3, 22 OCT 2009 to 19 NOV 2009

SE-3, 22 OCT 2009 to 19 NOV 2009