

APCH CRS	Rwy Idg	10012
192°	TDZE	65
	Arpt Elev	87

AL-436 [USAF]

EGLIN AFB (KVPS)

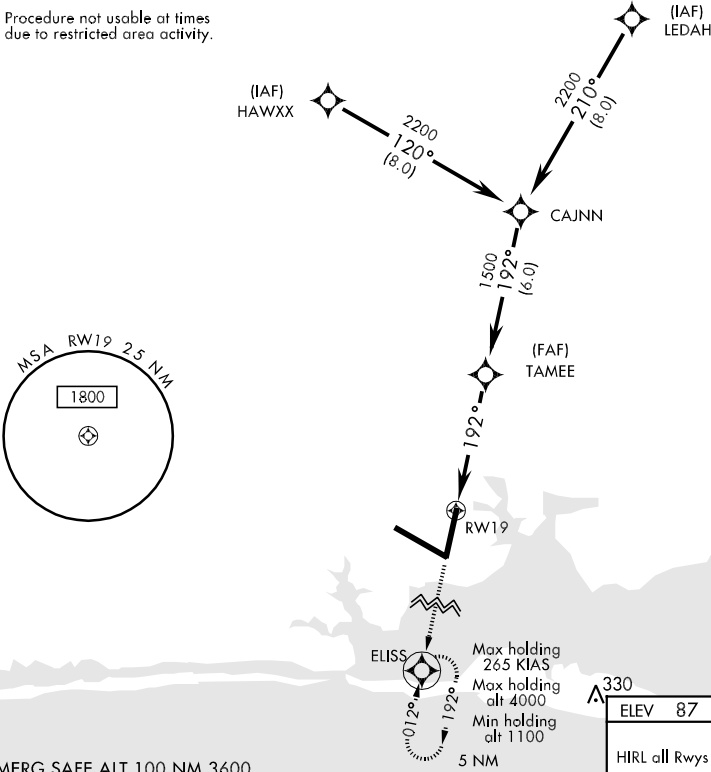
ALS-1

MISSED APPROACH: Climb straight ahead to 2000 to ELISS and hold.

\* When ALS inop, increase CAT AB RVR to 50 and vis to 1 mile, CAT C RVR to 60 and vis to 1½ miles, CAT DE increase vis by ½ mile. DME/DME RNP-0.3 NA

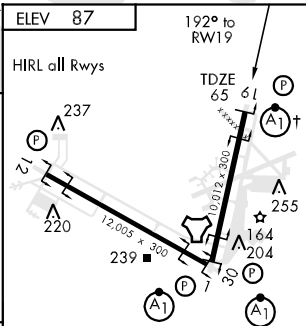
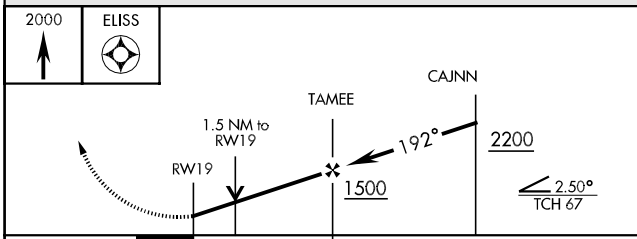
ATIS	EGLIN APP CON	EGLIN TOWER	GND CON	CLNC DEL
134.625 273.5	125.1 281.45 271° - 089° 132.1 360.6 090° - 270°	118.2 353.65	121.8 335.8	127.7 377.2

Procedure not usable at times due to restricted area activity.



SE-3, 22 OCT 2009 to 19 NOV 2009

SE-3, 22 OCT 2009 to 19 NOV 2009



CATEGORY	A	B	C	D	E
LNVA MDA*	540/24 475 (500-½)		540/40 475 (500-¾)	540/50 475 (500-1)	540/60 475 (500-1½)
CIRCLING	580-1 493 (500-1)		580-1½ 493 (500-1½)	700-2 613 (700-2)	700-2¼ 613 (700-2¼)