

VALPARAISO, FLORIDA

RNAV (GPS) RWY 1

APCH CRS	Rwy Idg	10012
012°	TDZE	64
	Arprt Elev	87

AL-436 [USAF]

EGLIN AFB (KVPS)

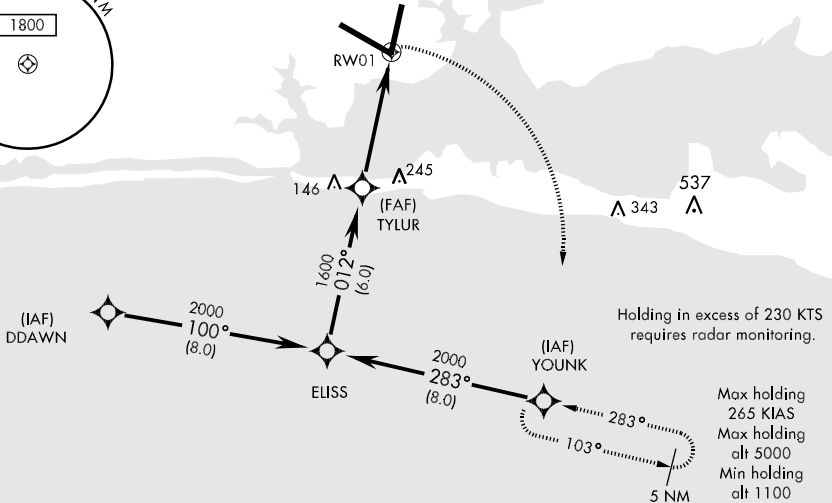
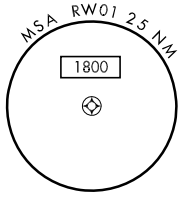
* When ALS inop, increase CAT AB RVR to 50 and vis to 1 mile, CAT C RVR to 60 and vis to 1¼ miles, CAT DE increase vis by ½ mile DME/DME RNP-0.3 NA



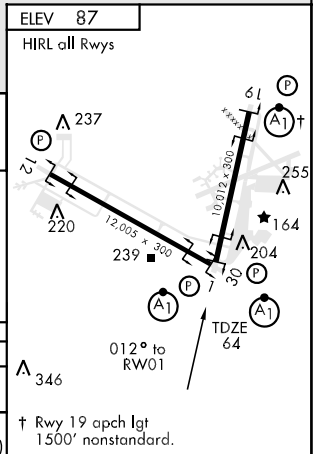
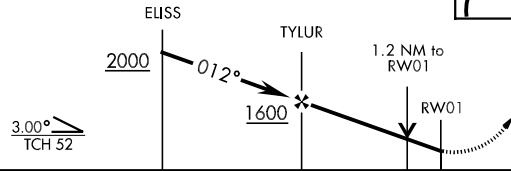
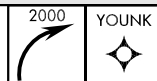
MISSED APPROACH: Climbing right turn to 2000 to YOUNK and hold.

ATIS	EGLIN APP CON	EGLIN TOWER	GND CON	CLNC DEL
134.625 273.5	125.1 281.45 132.1 360.6 271° - 089° 090° - 270°	118.2 353.65	121.8 335.8	127.7 377.2

Procedure not usable at times due to restricted area activity.



EMERG SAFE ALT 100 NM 3600



CATEGORY	A	B	C	D	E
LNNAV MDA*	500/24 436 (500-½)		500/40 436 (500-¾)	500/50	436 (500-1)
CIRCLING	580-1 493 (500-1)		580-1½ 493 (500-1½)	700-2 613 (700-2)	700-2¼ 613 (700-2¼)

VALPARAISO, FLORIDA
Orig 09043

30° 29' N-86° 32' W

EGLIN AFB (KVPS)

RNAV (GPS) RWY 1

SE-3, 22 OCT 2009 to 19 NOV 2009

SE-3, 22 OCT 2009 to 19 NOV 2009