


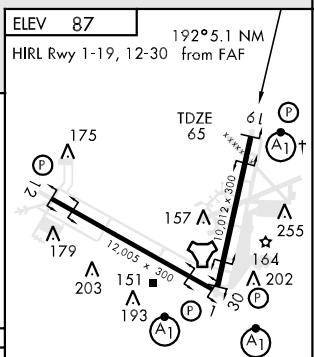
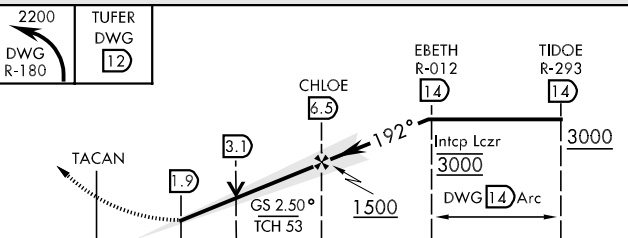
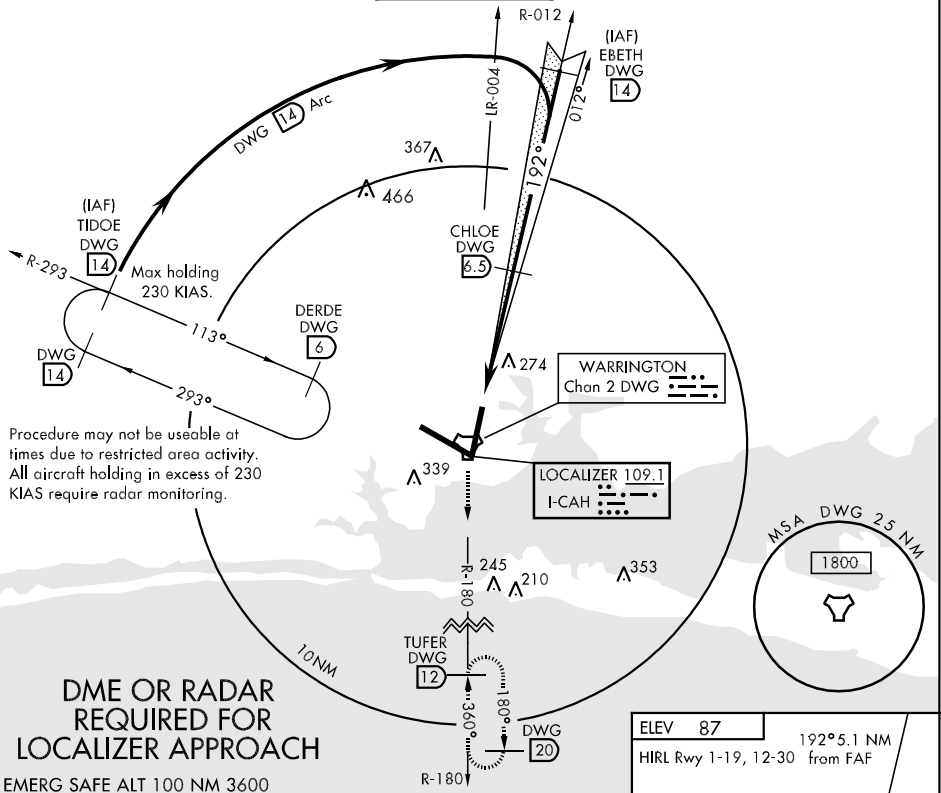
ILS Z RWY 19 or LOC Z RWY 19

LOC I-CAH 109.1	APCH CRS 192°	Rwy Idg 10,012 TDZE 65 Arpt Elev 87	AL-436 [USAF]	EGLIN AFB (KVPS)
---------------------------	-------------------------	--	---------------	------------------

* When ALS inop, increase CAT AB RVR to 40, and vis to ¾ mile, CAT CDE increase RVR to 50 and vis to 1 mile.
 ** When ALS inop, increase CAT AB RVR to 50 and vis 1 mile, CAT CD RVR to 60 and vis to 1½ miles, CAT E vis to 1½ miles.

ALSF-1  MISSED APPROACH: Climb to 2200 on DWG R-180 to 12 DME/TUFER and hold.

ATIS ★ 134.625 273.5	EGLIN APP CON 125.1 281.45 271°-089° 132.1 360.6 090°-270°	EGLIN TOWER 118.2 353.65	GND CON 121.8 335.8	CLNC DEL 127.7 377.2
--------------------------------	--	------------------------------------	-------------------------------	--------------------------------



CATEGORY	A	B	C	D	E															
S-ILS 19 *	265/24	200 (200-½)	265/40	200	(200-¾)	† Rwy 19 apch lgt 1500' nonstandard.														
S-LOC 19 **	480/24	415 (400-½)	480/40	415	(400-¾)	LOC FAF to MAP 4.6 NM														
CIRCLING	580-1	493 (500-1)	580-1½ 493 (500-1½)	700-2 613 (700-2)	700-2½ 613 (700-2½)	<table border="1"> <tr> <th>Knots</th> <td>60</td> <td>90</td> <td>120</td> <td>150</td> <td>180</td> <td>200</td> </tr> <tr> <th>Min:Sec</th> <td>4:36</td> <td>3:04</td> <td>2:18</td> <td>1:50</td> <td>1:32</td> <td>1:23</td> </tr> </table>	Knots	60	90	120	150	180	200	Min:Sec	4:36	3:04	2:18	1:50	1:32	1:23
Knots	60	90	120	150	180	200														
Min:Sec	4:36	3:04	2:18	1:50	1:32	1:23														

ILS Z RWY 19 or LOC Z RWY 19

SE-3, 22 OCT 2009 to 19 NOV 2009

SE-3, 22 OCT 2009 to 19 NOV 2009