

VALPARAISO, FLORIDA

# HI-TACAN RWY 1

TACAN DWG Chan <b>2</b>	APCH CRS <b>360°</b>	Rwy ldg TDZE <b>65</b> Arpt Elev <b>87</b>
----------------------------	-------------------------	--

JAL-436 [USAF]

EGLIN AFB (KVPS)

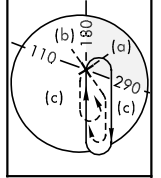
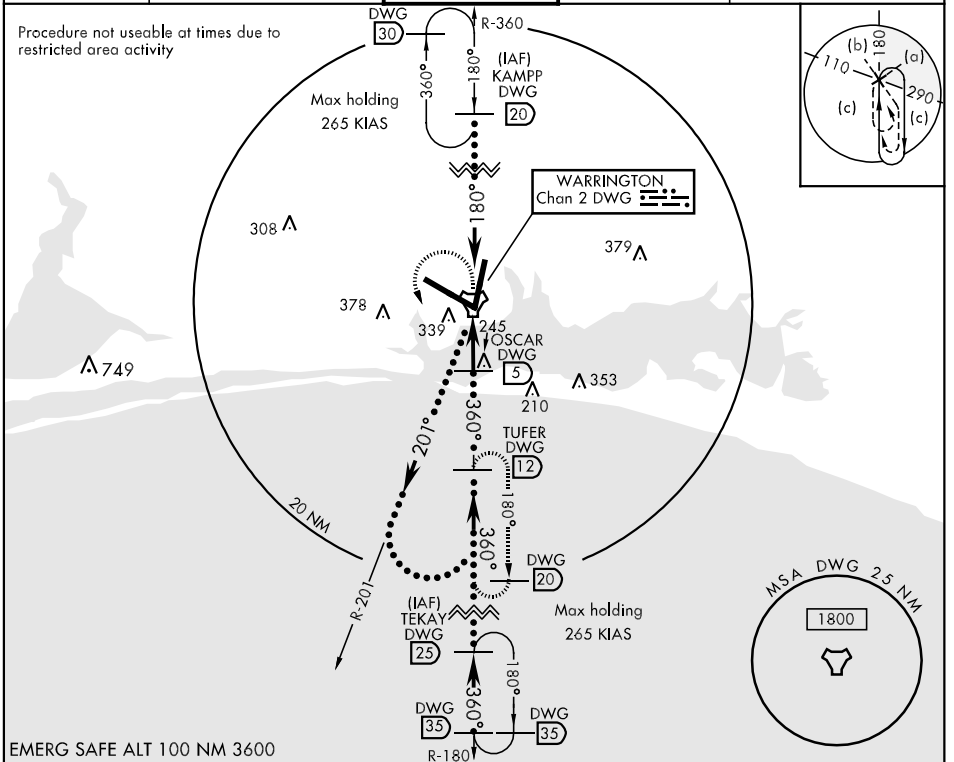
\* When ALS inop increase CAT C RVR to 50 and vis to 1 mile, CAT D RVR to 60 and vis to 1½ miles, CAT E vis to 1½ miles.



MISSED APPROACH: Climb to 800 then climbing left turn to 2200 direct DWG R-180/12 DME (TUFER) and hold.

ATIS * <b>134.625 273.5</b>	EGLIN APP CON <b>125.1 281.45</b> 271°-089° <b>132.1 360.6</b> 090°-270°	EGLIN TOWER <b>118.2 353.65</b>	GND CON <b>121.8 335.8</b>	CLNC DEL <b>127.7 377.2</b>
--------------------------------	--	------------------------------------	-------------------------------	--------------------------------

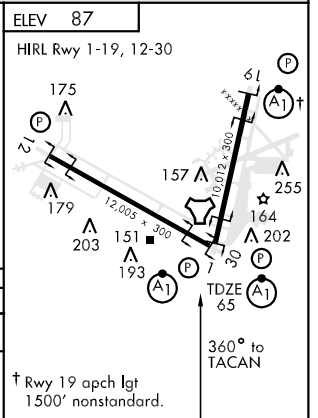
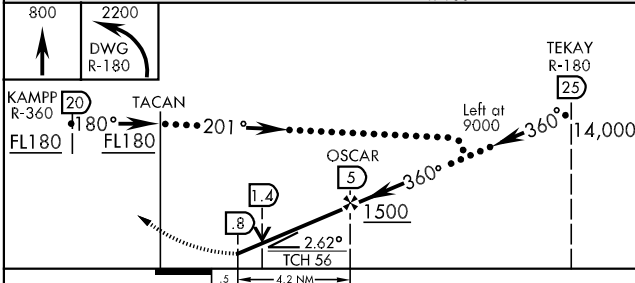
Procedure not useable at times due to restricted area activity



SE-3, 22 OCT 2009 to 19 NOV 2009

SE-3, 22 OCT 2009 to 19 NOV 2009

EMERG SAFE ALT 100 NM 3600



CATEGORY	C	D	E
S-1 *	460/40 396	(400-34)	460/50 396 (400-1)
CIRCLING	580-1½ 493 (500-1½)	700-2 613 (700-2)	700-2½ 613 (700-2½)

VALPARAISO, FLORIDA  
Orig 07046

30°29'N-86°32'W

EGLIN AFB (KVPS)

# HI-TACAN RWY 1