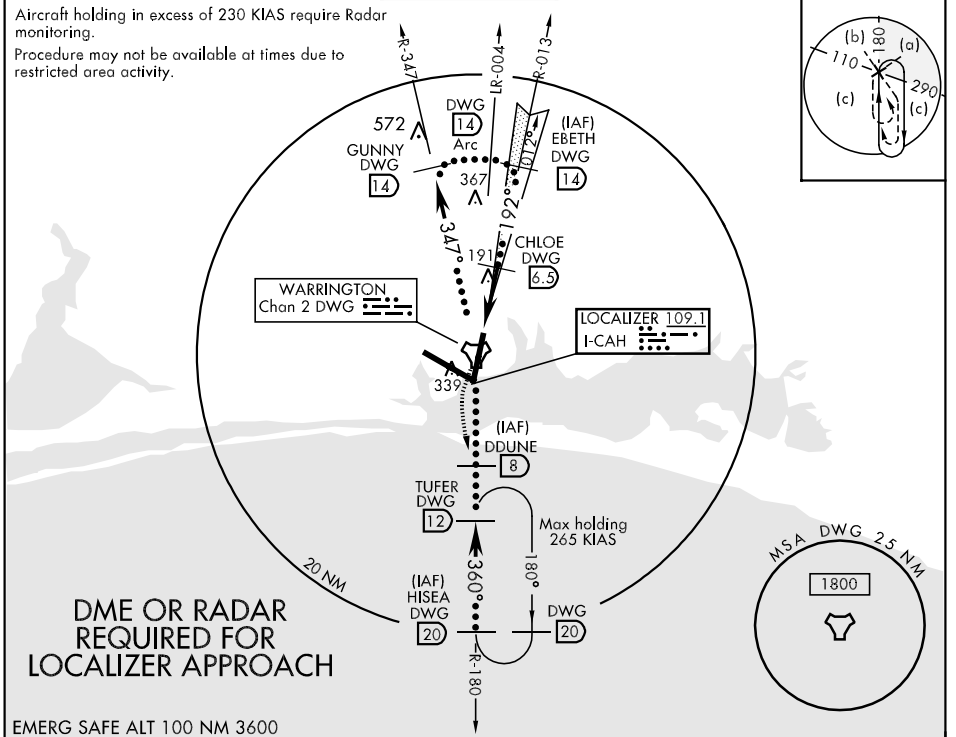


LOC I-CAH 109.1	APCH CRS 192°	Rwy Idg 10,012 TDZE 65 Arpt Elev 87	JAL-436 [USAF]	EGLIN AFB (KVPS)
---------------------------	-------------------------	--	----------------	------------------

* When ALS inop, increase all CAT RVR to 50 and vis to 1 mile.
 ** When ALS inop, increase CAT CD RVR to 60 and vis to 1 1/4 miles, CAT E vis to 1 1/4 miles.

ATIS ★ 134.625 273.5	EGLIN APP CON 125.1 281.45 271°-089° 132.1 360.6 090°-270°	EGLIN TOWER 118.2 353.65	GND CON 121.8 335.8	CINC DEL 127.7 377.2
--------------------------------	--	------------------------------------	-------------------------------	--------------------------------



SE-3, 22 OCT 2009 to 19 NOV 2009

SE-3, 22 OCT 2009 to 19 NOV 2009

				ELEV 87 HIRL Rwy 1-19, 12-30 TDZE 65 192° 5.1 NM from FAF													
CATEGORY	C	D	E	† Rwy 19 apch lgt 1500' nonstandard.													
S-ILS 19 *	265/40	200	(200-3/4)	FAF to MAP 4.6 NM													
S-LOC 19 **	480/40	415	(400-3/4)	<table border="1"> <tr> <th>Knots</th> <td>120</td> <td>140</td> <td>160</td> <td>180</td> <td>200</td> </tr> <tr> <th>Min:Sec</th> <td>2:18</td> <td>1:58</td> <td>1:43</td> <td>1:32</td> <td>1:23</td> </tr> </table>		Knots	120	140	160	180	200	Min:Sec	2:18	1:58	1:43	1:32	1:23
Knots	120	140	160	180	200												
Min:Sec	2:18	1:58	1:43	1:32	1:23												
CIRCLING	580-1 1/2 493 (500-1 1/2)	700-2 613 (700-2)	700-2 1/4 613 (700-2 1/4)														