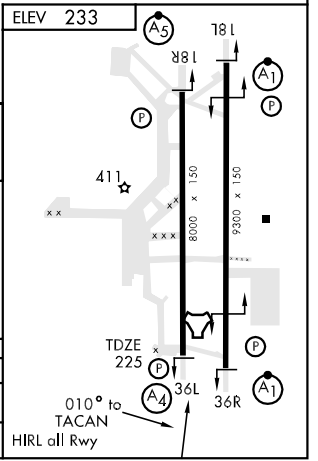
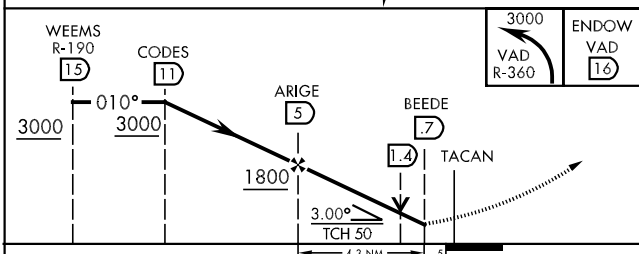
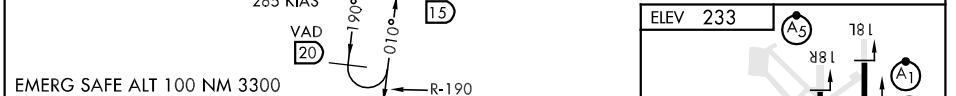
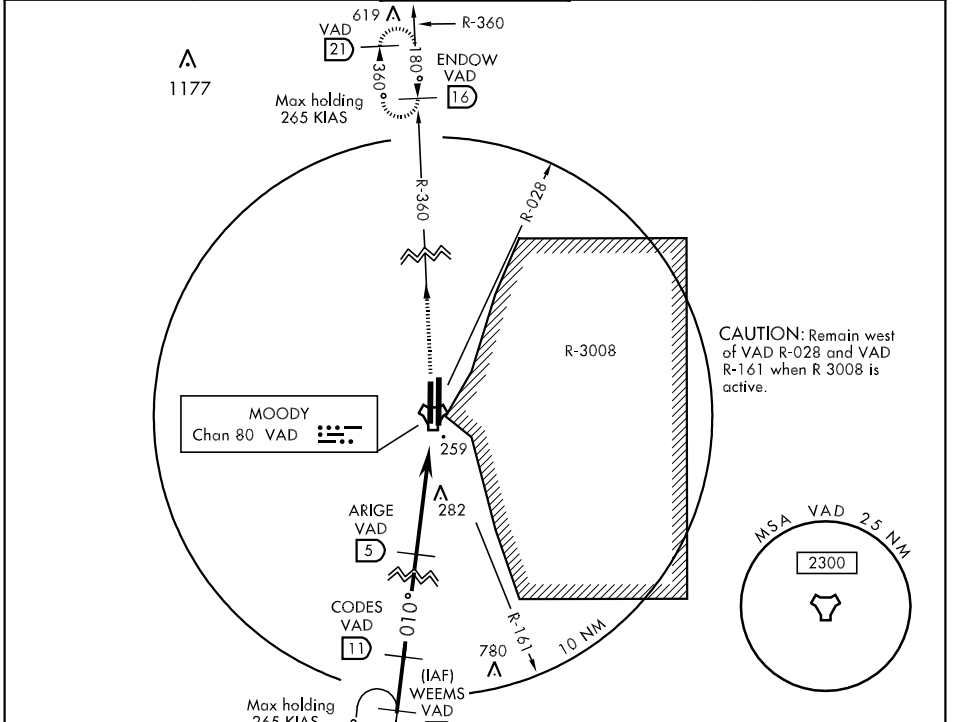


TACAN VAD Chan 80	APCH CRS 010°	Rwy Idg 8000 TDZE 225 Arpt Elev 233	AL-435 [USAF]	MOODY AFB (KVAD)
----------------------	------------------	--	---------------	------------------

▼ * When ALS inop, increase CAT AB RVR to 50 and vis to 1 mile, CAT C RVR to 60 and vis to 1 1/4 miles, CAT DE vis to 1 1/2 miles.

MALS (A4) MISSED APPROACH: Climb and maintain 3000 via VAD R-360 to ENDOW and hold.

ATIS ★ 273.5	VALDOSTA APP CON 126.6 285.6	MOODY TOWER ★ 128.45 257.625	GND CON 138.95 275.8	CLNC DEL 120.625 296.7
-----------------	---------------------------------	---------------------------------	-------------------------	---------------------------



CATEGORY	A	B	C	D	E
S-36L*	660/40	436 (500-3/4)	660/50 436 (500-1)	660/60	436 (500-1/4)
CIRCLING	720-1	487 (500-1)	720-1 1/2 487 (500-1 1/2)	800-2 567 (600-2)	1060-3 827 (900-3)

SE-4, 22 OCT 2009 to 19 NOV 2009

SE-4, 22 OCT 2009 to 19 NOV 2009