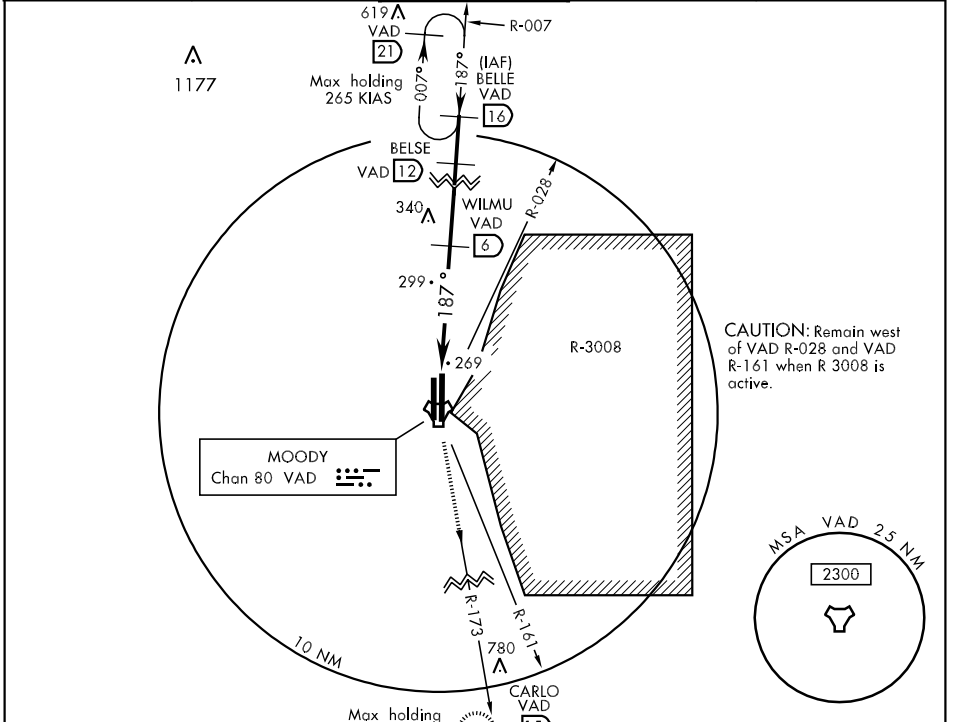


TACAN VAD Chan 80	APCH CRS 187°	Rwy Idg TDZE Arpt Elev	9300 233 233	AL-435 [USAF]	MOODY AFB (KVAD)
----------------------	------------------	------------------------------	--------------------	---------------	------------------

V \*When ALS inop, increase CAT AB RVR to 50 and vis to 1 mile, CAT C RVR to 60 and vis to 1¼ miles, CAT DE vis to 1½ miles.
 A1
MISSED APPROACH: Climb and maintain 3000 via VAD R-173 to CARLO and hold.

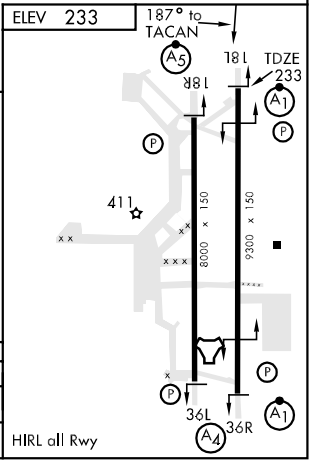
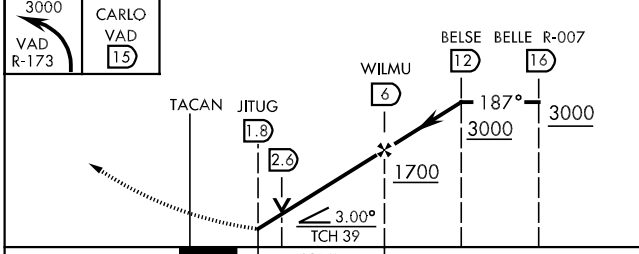
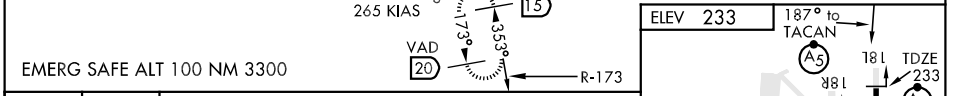
ATIS ★ 273.5	VALDOSTA APP CON 126.6 285.6	MOODY TOWER ★ 128.45 257.625	GND CON 138.95 275.8	CLNC DEL 120.625 296.7
-----------------	---------------------------------	---------------------------------	-------------------------	---------------------------



CAUTION: Remain west of VAD R-028 and VAD R-161 when R 3008 is active.

SE-4, 22 OCT 2009 to 19 NOV 2009

SE-4, 22 OCT 2009 to 19 NOV 2009



CATEGORY	A	B	C	D	E
S-18L*	680/24	447 (500-½)	680/40 447 (500-¾)	680/50	447 (500-1)
CIRCLING	720-1	487 (500-1)	720-1½ 487 (500-1½)	800-2 567 (600-2)	1060-3 827 (900-3)