

VALDOSTA, GEORGIA

RNAV (GPS) RWY 36R

APCH CRS 003°	Rwy Idg 9300
	TDZE 215
	Arpt Elev 233

AL-435 [USAF]

MOODY AFB (KVAD)

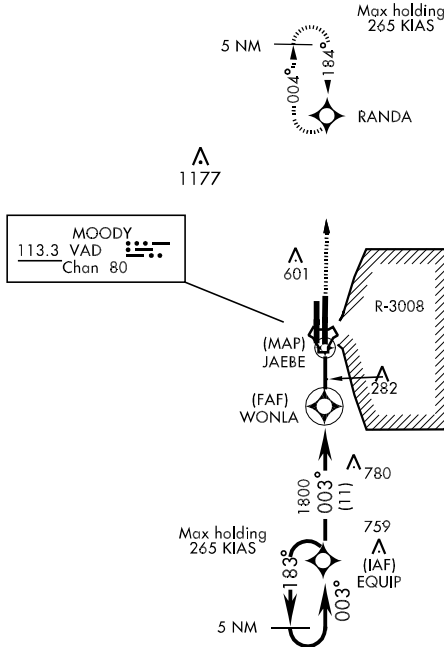
* When ALS inop, increase CAT AB to RVR 50 and vis to 1 mile, CAT C to RVR 60 and vis to 1 1/4 miles, CAT DE vis to 1 1/2 miles.

ALSF-1 

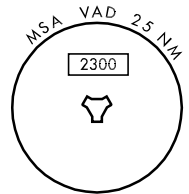
MISSED APPROACH: Climb and maintain 3000 via heading 004° to RANDA and hold.

ATIS ★ 273.5	VALDOSTA APP CON 126.6 285.6	MOODY TOWER ★ 128.45 257.625	GND CON 138.95 275.8	CLNC DEL 120.625 296.7
------------------------	--	--	--------------------------------	----------------------------------

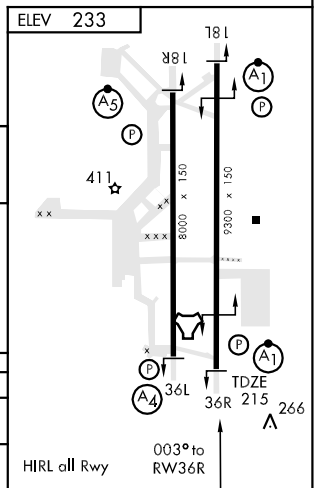
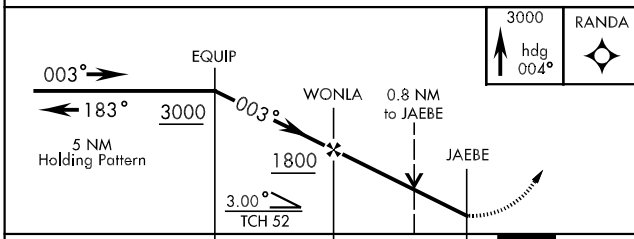
DME/DME RNP-0.3 NA



CAUTION: Remain west of 83°11'W from FAF inbound when R-3008 is active.



EMERG SAFE ALT 100 NM 3300



CATEGORY	A	B	C	D	E
RNAV MDA*	660/24	445 (500-1/2)	660/40 445 (500-3/4)	660/50	445 (500-1)
CIRCLING	720-1	487 (500-1)	720-1 1/2 487 (500-1 1/2)	800-2 567 (600-2)	1060-3 827 (900-3)

VALDOSTA, GEORGIA

30°58'N-83°12'W

MOODY AFB (KVAD)

Amdt 2 09127

RNAV (GPS) RWY 36R

SE-4, 22 OCT 2009 to 19 NOV 2009

SE-4, 22 OCT 2009 to 19 NOV 2009