

VALDOSTA, GEORGIA

RNAV (GPS) RWY 18L

APCH CRS 183°	Rwy Idg 9300
	TDZE 233
	Arpt Elev 233

AL-435 [USAF]

MOODY AFB (KVAD)

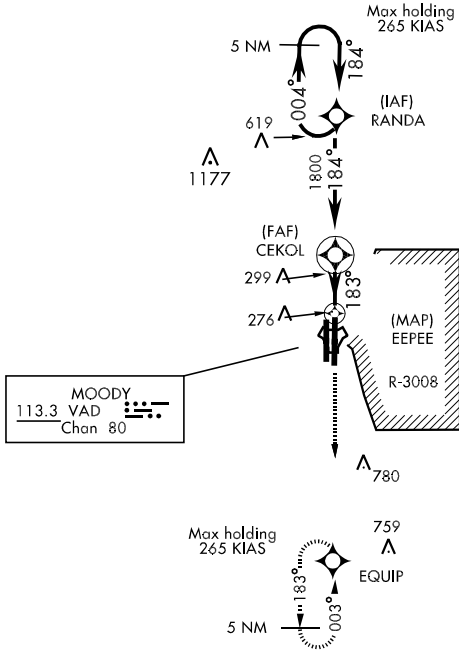
▼ * When ALS inop, increase CAT AB to RVR 50 and vis to 1 mile, CAT C to RVR 60 and vis to 1¼ miles, CAT DE vis to 1½.

ALSF-1
A1

MISSED APPROACH: Climb and maintain 3000 via heading 183° to EQUIP and hold.

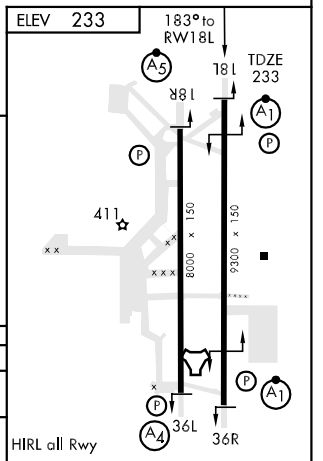
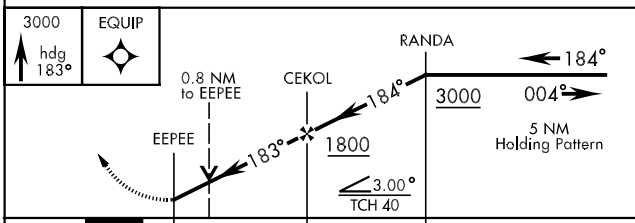
ATIS ★ 273.5	VALDOSTA APP CON 126.6 285.6	MOODY TOWER ★ 128.45 257.625	GND CON 138.95 275.8	CLNC DEL 126.625 296.7
------------------------	--	--	--------------------------------	----------------------------------

DME/DME RNP-0.3 NA



CAUTION: Remain west of 83°11'W from FAF inbound when R-3008 is active.

EMERG SAFE ALT 100 NM 3300



CATEGORY	A	B	C	D	E
LNNAV MDA*	680/24	447 (500-½)	680/40 447 (500-¾)	680/50	447 (500-1)
CIRCLING	720-1	487 (500-1)	720-1½ 487 (500-1½)	800-2 567 (600-2)	1060-3 827 (900-3)

VALDOSTA, GEORGIA

30°58'N-83°12'W

MOODY AFB (KVAD)

Amdt 2 09127

RNAV (GPS) RWY 18L

SE-4, 22 OCT 2009 to 19 NOV 2009

SE-4, 22 OCT 2009 to 19 NOV 2009