

VOR or TACAN RWY 26

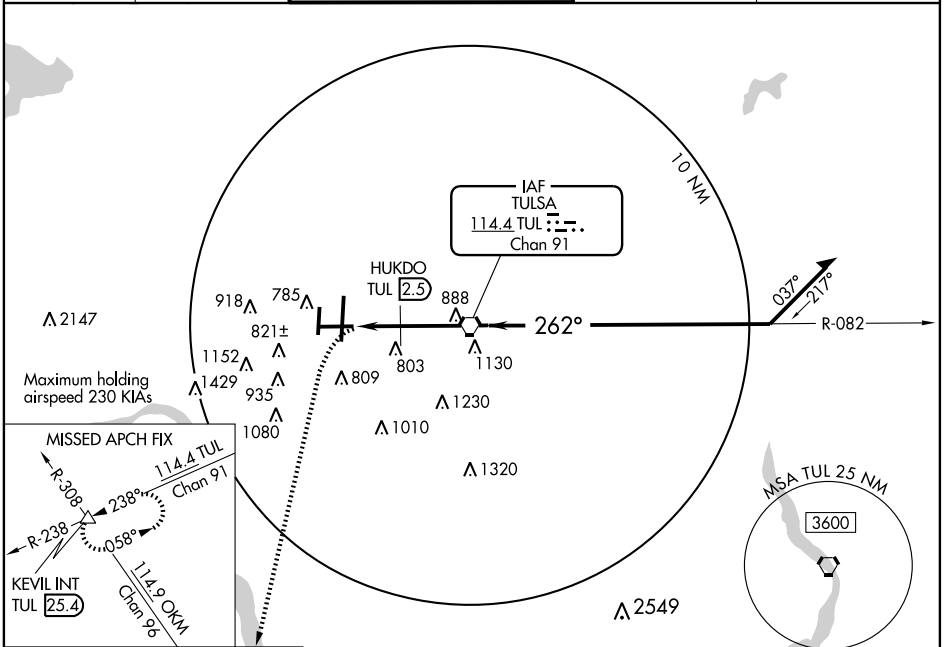
TULSA INTL (TUL)

VORTAC TUL 114.4 Chan 91	APP CRS 262°	Rwy Idg TDZE Apt Elev	7376 651 677
---------------------------------------	------------------------	-----------------------------	---

MISSED APPROACH: Climbing left turn to 2600 via heading 220° and TUL R-238 to KEVIL Int/TUL 25.4 DME and hold.

ASR Circling NA for Cat E south of Rwy 8-26.

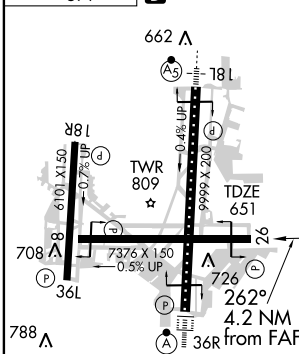
ATIS 124.9 377.2	TULSA APP CON 124.0 338.3	TULSA TOWER 121.2 310.8 (Rwys 18L-36R, 8-26) 118.7 257.8 (Rwy 18R-36L)	GND CON 121.9 348.6	CLNC DEL 134.05 284.7
----------------------------	-------------------------------------	--	-------------------------------	---------------------------------



SC-1, 22 OCT 2009 to 19 NOV 2009

SC-1, 22 OCT 2009 to 19 NOV 2009

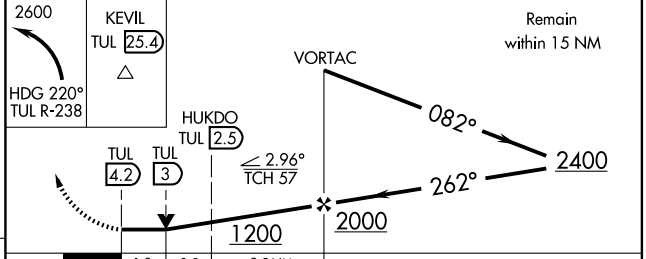
ELEV 677 **D**



TDZ/CL Rwy 36R
HIRL Rwys 8-26, 18L-36R and 18R-36L
REIL Rwys 8, 18R, 26 and 36L

FAF to MAP 4.2 NM

Knots	60	90	120	150	180
Min:Sec	4:12	2:48	2:06	1:41	1:24



CATEGORY	A	B	C	D	E
S-26	1200-1 549 (600-1)		1200-1½ 549 (600-1½)	1200-1¾ 549 (600-1¾)	1200-2 549 (600-2)
CIRCLING	1200-1 523 (600-1)		1200-1½ 523 (600-1½)	1300-2 623 (700-2)	1300-2¼ 623 (700-2¼)

HUKDO FIX MINIMUMS					
S-26	1060-1 409 (500-1)		1060-1¼ 409 (500-1¼)		1060-1½ 409 (500-1½)
CIRCLING	1120-1 443 (500-1)	1140-1 463 (500-1)	1140-1½ 463 (500-1½)	1300-2 623 (700-2)	1300-2¼ 623 (700-2¼)