

RNAV (GPS) RWY 8

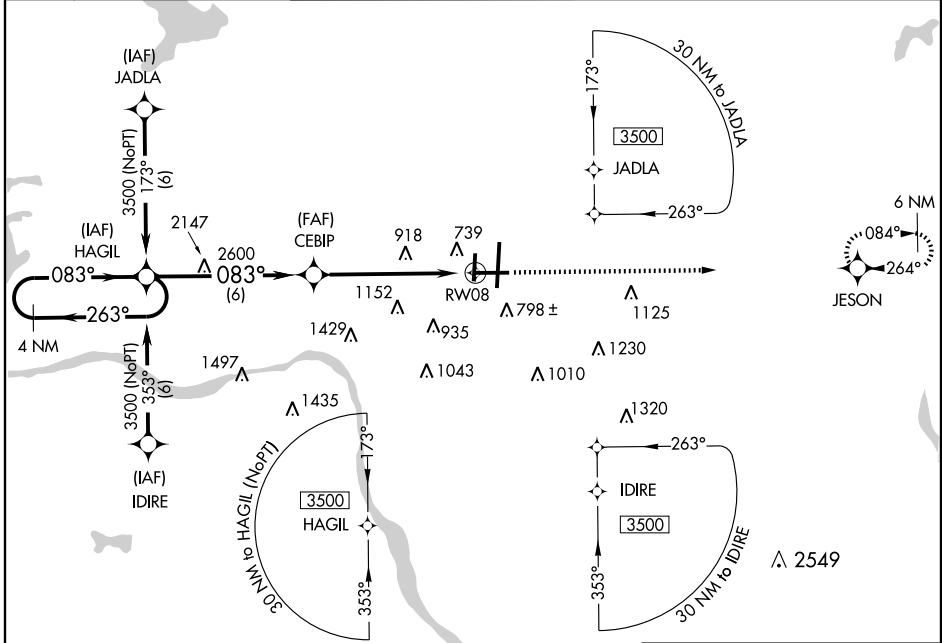
TULSA INTL (TUL)

APP CRS 083°	Rwy Idg 7376
	TDZE 671
	Apt Elev 677

⚠ Cat. E circling not authorized south of Rwy 8-26.
⚠ NA Baro-VNAV NA BELOW -16°C (3°F).
 ASR DME/DME RNP-0.3 NA.

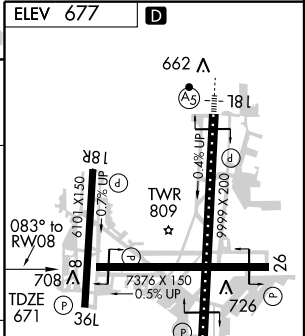
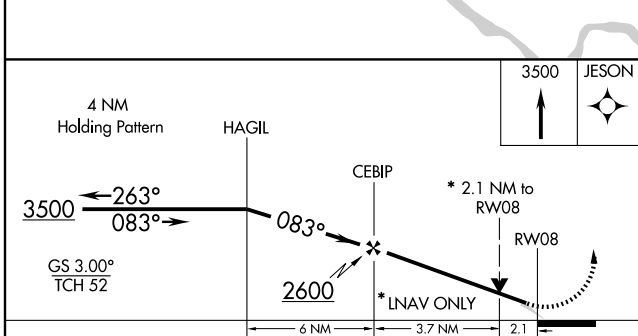
MISSED APPROACH: Climb to 3500 direct JESON and hold.

ATIS 124.9 377.2	TULSA APP CON 124.0 338.3	TULSA TOWER 121.2 310.8 (Rwys 18L-36R, 8-26) 118.7 257.8 (Rwy 18R-36L)	GND CON 121.9 348.6	CLNC DEL 134.05 284.7
----------------------------	-------------------------------------	--------------------------------------------------------------------------------------------	-------------------------------	---------------------------------



SC-1, 22 OCT 2009 to 19 NOV 2009

SC-1, 22 OCT 2009 to 19 NOV 2009



CATEGORY	A	B	C	D	E
GLS PA DA	NA				
LNAV/VNAV DA	1061-1¼ 390 (400-1¼)				
LNAV MDA	1380-1 709 (800-1)	1380-2 709 (800-2)	1380-2¼ 709 (800-2¼)	1380-2½ 709 (800-2½)	1380-2¾ 709 (800-2¾)
CIRCLING	1380-1 703 (800-1)	1380-2 703 (800-2)	1380-2¼ 703 (800-2¼)	1380-2½ 703 (800-2½)	1380-2¾ 703 (800-2¾)

TDZ/CL Rwy 36R
 HIRL Rwys 8-26, 18L-36R and 18R-36L
 REIL Rwys 8, 18R, 26 and 36L