

RNAV (GPS) RWY 36L

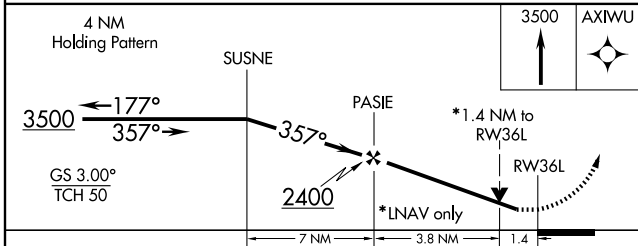
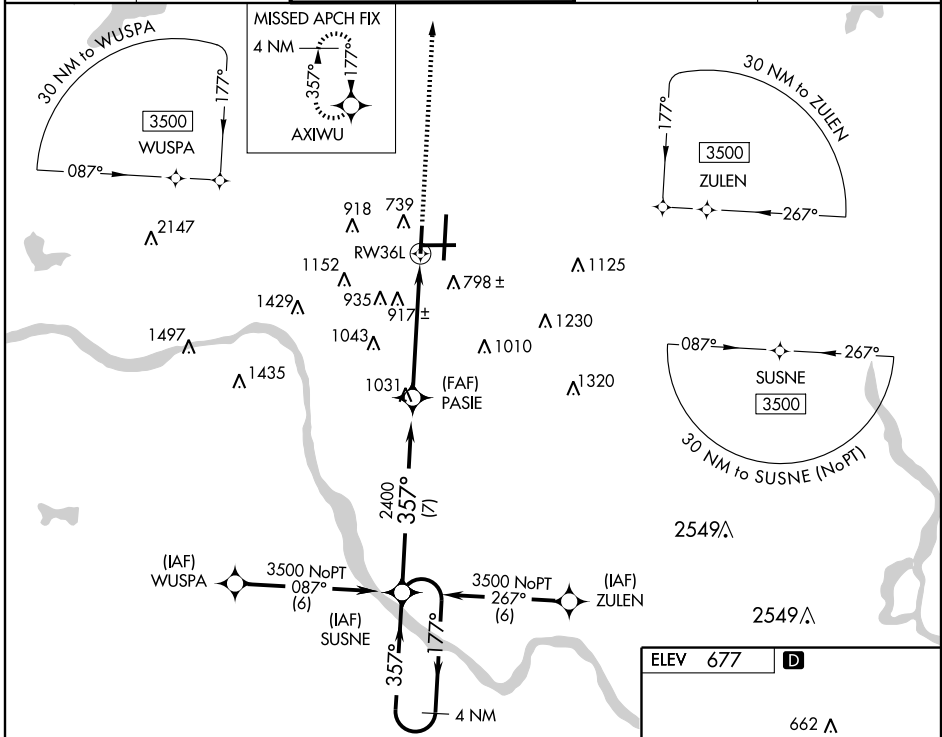
TULSA INTL (TUL)

APP CRS	Rwy Idg	6101
357°	TDZE	677
	Apt Elev	677

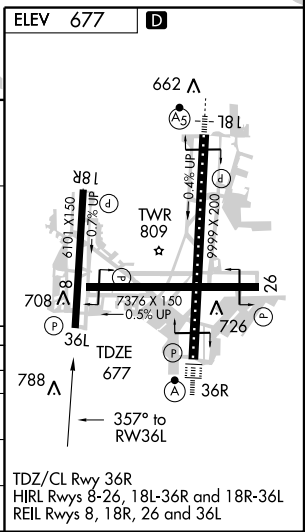
ASR Cat. E circling not authorized south of Rwy 8-26.
Baro-VNAV NA BELOW -16°C (3°F).
DME/DME RNP-0.3 NA.

MISSED APPROACH: Climb to 3500 direct AXIWU and hold.

ATIS 124.9 377.2	TULSA APP CON 124.0 338.3	TULSA TOWER 121.2 310.8 (Rwys 18L-36R, 8-26) 118.7 257.8 (Rwy 18R-36L)	GND CON 121.9 348.6	CLNC DEL 134.05 284.7
----------------------------	-------------------------------------	--	-------------------------------	---------------------------------



CATEGORY	A	B	C	D
GLS PA DA	NA			
LNAV/VNAV DA	1104-1½ 427 (500-1½)			
LNAV MDA	1180-1 503 (600-1)	1180-1½ 503 (600-½)		
CIRCLING	1180-1 503 (600-1)	1180-1½ 503 (600-½)	1300-2 623 (700-2)	



SC-1, 22 OCT 2009 to 19 NOV 2009

SC-1, 22 OCT 2009 to 19 NOV 2009