

# RNAV (GPS) RWY 18L

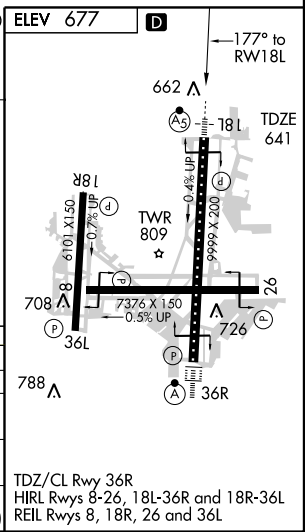
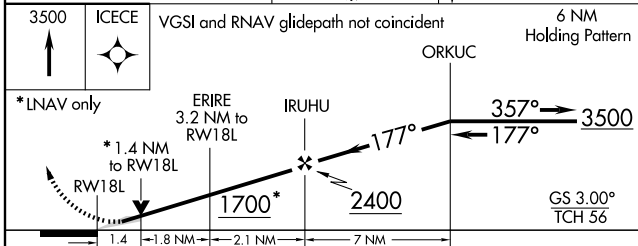
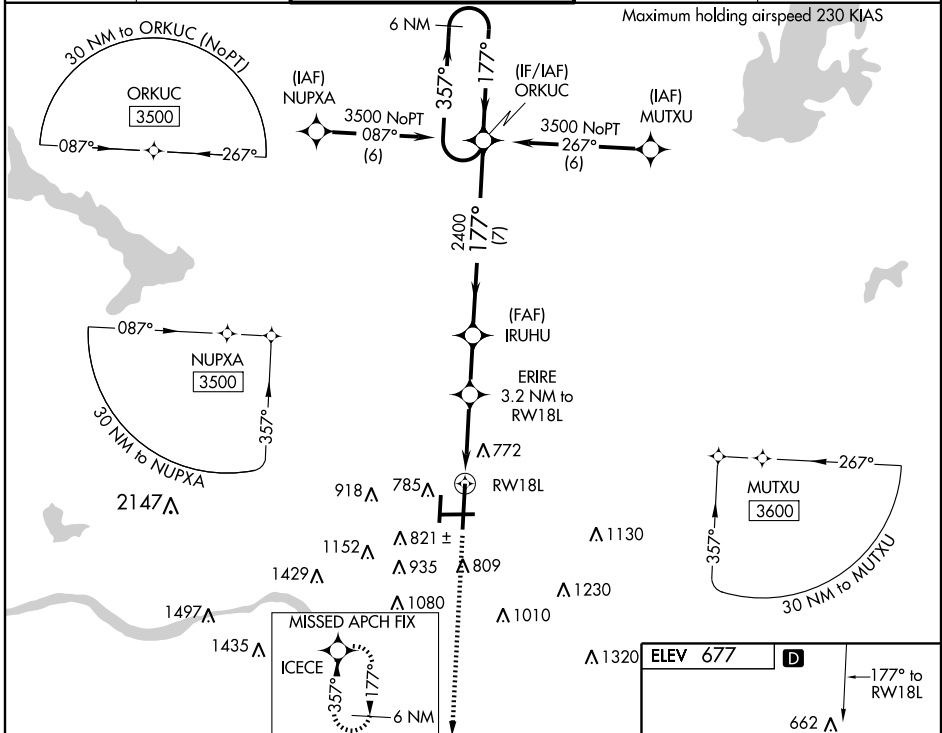
TULSA INTL (TUL)

WAAS CH <b>93504</b> <b>W18A</b>	APP CRS <b>177°</b>	Rwy Idg TDZE Apt Elev	<b>9999</b> <b>641</b> <b>677</b>
--	------------------------	-----------------------------	---

**⚠** Circling NA for Cat E south of Rwy 8-26. For uncompensated Baro-VNAV systems, LNAV/VNAV NA below -16°C (4°F) or above 47°C (116°F). DME/DME RNP-0.3 NA. For inoperative MALSR, increase LPV all Cats visibility ½ mile, LNAV/VNAV Cat E visibility to 1¾, and LNAV Cat E visibility to 1½.

**MALSR** MISSED APPROACH: Climb to 3500 direct ICECE and hold.

ATIS <b>124.9 377.2</b>	TULSA APP CON <b>124.0 338.3</b>	TULSA TOWER <b>121.2 310.8</b> (Rwys 18L-36R, 8-26) <b>118.7 257.8</b> (Rwy 18R-36L)	GND CON <b>121.9 348.6</b>	CLNC DEL <b>134.05 284.7</b>
----------------------------	-------------------------------------	--	-------------------------------	---------------------------------



CATEGORY	A	B	C	D	E
LPV DA	908/24		267 (300-½)		
LNAV/VNAV DA	1117/60		476 (500-1¼)		
LNAV MDA	1080/24	439 (500-½)	1080/40 439 (500-¾)	1080/50	439 (500-1)
CIRCLING	1120-1 443 (500-1)	1140-1 463 (500-1)	1140-1½ 463 (500-1½)	1300-2 623 (700-2)	1300-2½ 623 (700-2½)

TDZ/CL Rwy 36R  
HIRL Rwys 8-26, 18L-36R and 18R-36L  
REIL Rwys 8, 18R, 26 and 36L

SC-1, 22 OCT 2009 to 19 NOV 2009

SC-1, 22 OCT 2009 to 19 NOV 2009