

TULSA, OKLAHOMA

HI-VOR/DME or TACAN RWY 26

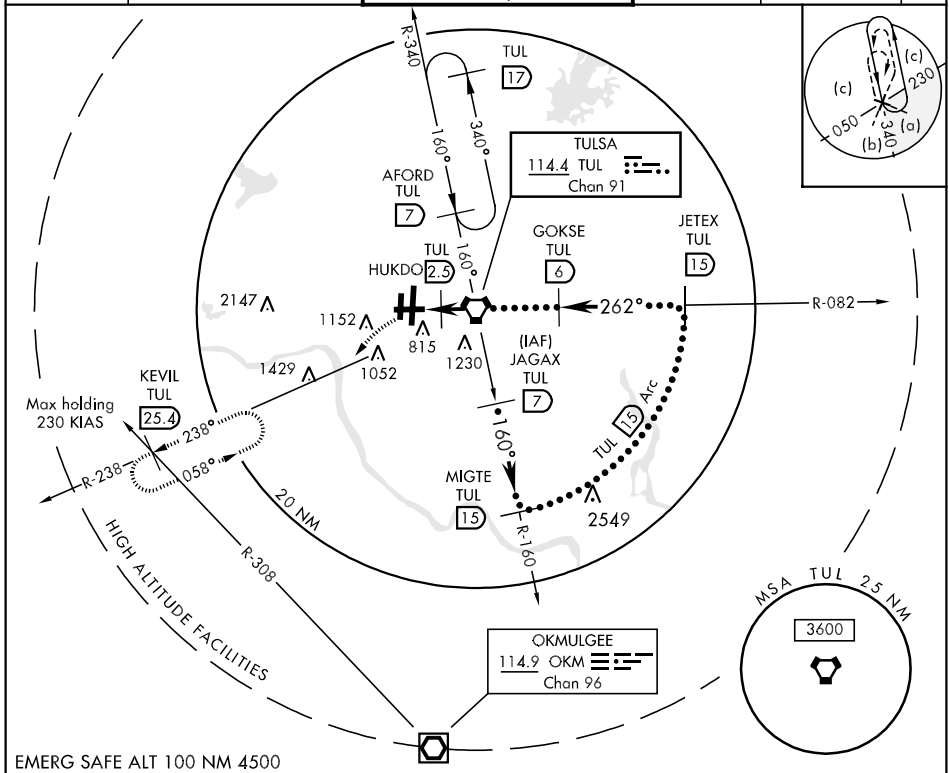
VORTAC TUL 114.4 Chan 91	APCH CRS 262°	Rwy Idg TDZE Arpt Elev 7376 651 677
---------------------------------------	-------------------------	---

JAL-432 [USAF]

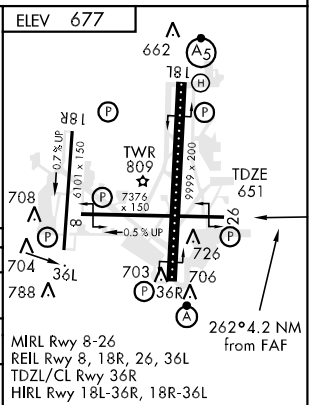
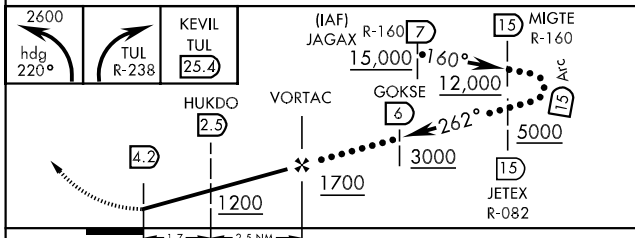
TULSA INTL (KTUL)

* CAT E circling not authorized S of Rwy 08-26. MISSED APPROACH: Climbing left turn to 2600 via heading 220° and TUL R-238 to KEVIL INT/TUL 25.4 DME and hold.

ATIS 124.9 377.2	TULSA APP CON 175° - 354° 124.0 338.3 355° - 174° 119.1 351.8	TULSA TOWER 121.2 310.8 Rwys 18L-36R, 8-26 118.7 257.8 Rwy 18R-36L	GND CON 121.9 348.6	CLNC DEL 134.05 284.7	ASR
----------------------------	---	--	-------------------------------	---------------------------------	-----



EMERG SAFE ALT 100 NM 4500



CATEGORY	C	D	E
S-26	1060-1¼	409 (400-1¼)	1060-1½ 409 (400-1½)
CIRCLING *	1140-1½ 463 (500-1½)	1300-2 623 (700-2)	1300-2¼ 623 (700-2¼)
S-ASR 26	1060-1¼	409 (400-1¼)	1060-1½ 409 (400-1½)

TULSA, OKLAHOMA

36°12'N-95°53'W

TULSA INTL (KTUL)

Amtd 3 08213

HI-VOR/DME or TACAN RWY 26

SC-1, 22 OCT 2009 to 19 NOV 2009

SC-1, 22 OCT 2009 to 19 NOV 2009