

RNAV (GPS) RWY 26

TUCUMCARI MUNI (TCC)

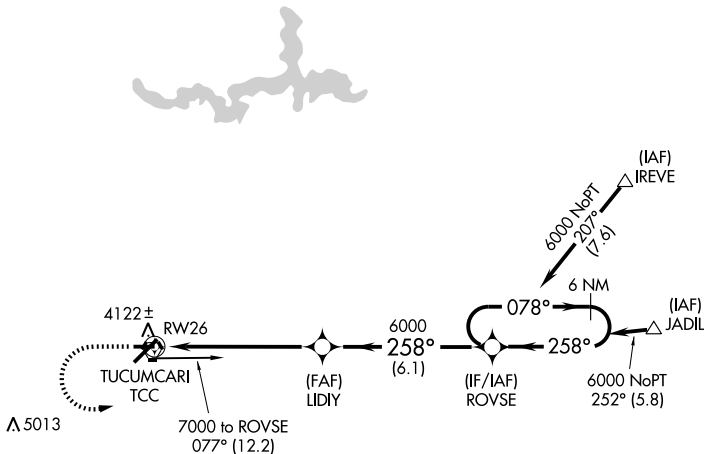
APP CRS 258°	Rwy Idg 4599
	TDZE 4055
	Apt Elev 4065

GPS or RNP-0.3 required. DME/DME RNP-0.3 NA.
Circling to Rwy 8 NA at night.
If local altimeter setting not received, procedure NA.

MISSED APPROACH: Climb to 5000 then climbing left turn to 6000 direct ROVSE and hold.

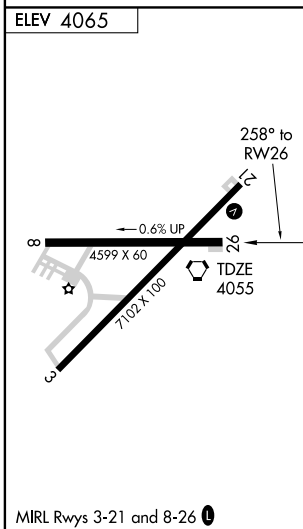
ASOS 119.275	ALBUQUERQUE CENTER 126.85 285.6	UNICOM 122.95 (CTAF) 0
------------------------	---	----------------------------------

Procedure NA for arrival at TCC VORTAC via V402 westbound.



SW-1, 22 OCT 2009 to 19 NOV 2009

SW-1, 22 OCT 2009 to 19 NOV 2009



ELEV 4065	A5270			
5000	6000	ROVSE	LIDIY	
			ROVSE	6 NM Holding Pattern
	1.2 NM to RWY26	≤ 3.01° TCH 45	6000	078° → 6000
	1.2 NM	258°	← 258°	← 258°
	1.2 NM	4.8 NM	6.1 NM	
CATEGORY	A	B	C	D
LNAV MDA	4460-1	405 (400-1)	4460-1¼	405 (400-1¼)
CIRCLING	4580-1	515 (600-1)	4580-1½	4620-2
			515 (600-1½)	555 (600-2)