

TUCSON, ARIZONA

AL-430 (FAA)

# RNAV (GPS) RWY 29L

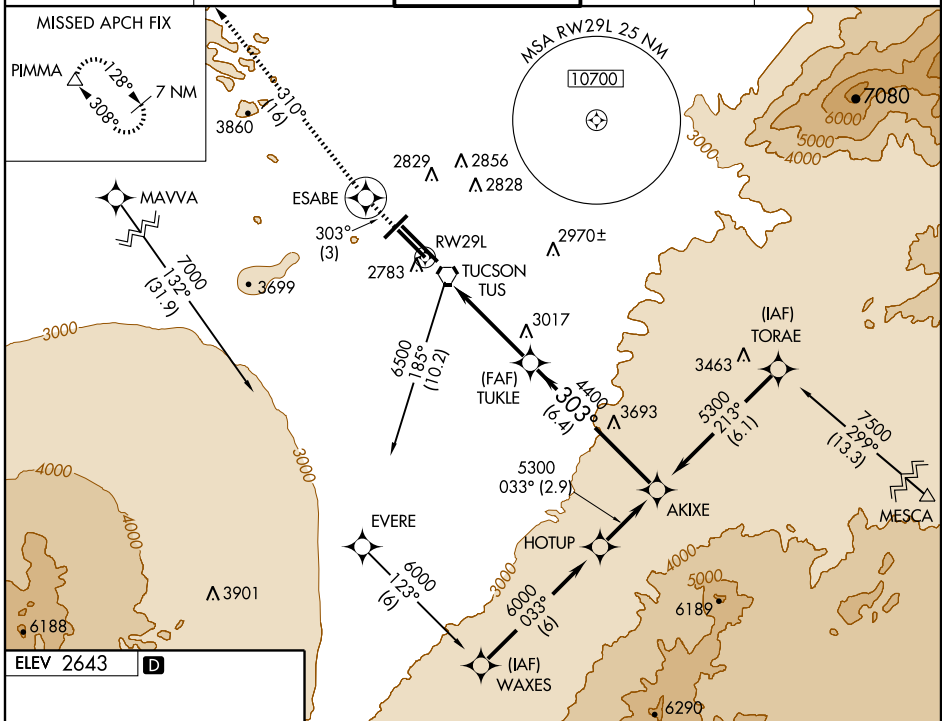
TUCSON INTL (TUS)

APP CRS <b>303°</b>	Rwy Idg <b>8408</b>
	TDZE <b>2629</b>
	Apt Elev <b>2643</b>

**⚠** For uncompensated Baro-VNAV systems, LNAV/VNAV NA below -20°C (-4°F) or above 43°C (111°F).  
**⚠** DME/DME RNP-0.3 NA.

**MISSED APPROACH:** Climb to 6500 via 303° course to ESABE and via 310° track to PIMMA and hold.

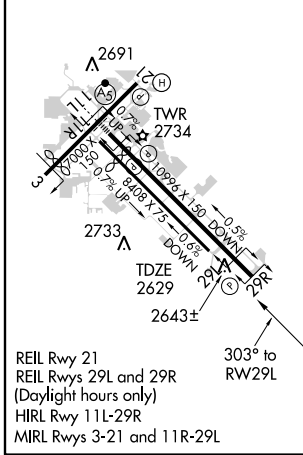
ATIS <b>123.8 279.65</b>	TUCSON APP CON <b>119.4 318.1</b>	TUCSON TOWER <b>118.3 257.8</b>	GND CON <b>124.4 348.6</b>	CLNC DEL <b>126.65 326.2</b>
-----------------------------	--------------------------------------	------------------------------------	-------------------------------	---------------------------------



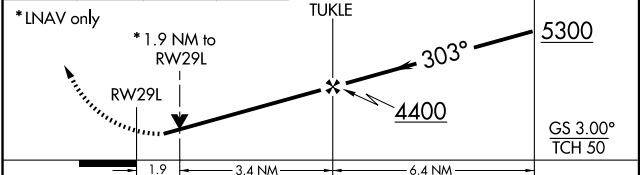
SW-4, 22 OCT 2009 to 19 NOV 2009

SW-4, 22 OCT 2009 to 19 NOV 2009

ELEV 2643	<b>D</b>
-----------	----------



6500 ↑ 303°	ESABE	310° track	PIMMA △	Procedure Turn NA
-------------------	-------	------------	------------	-------------------



CATEGORY	A				B				C				D			
GLS PA DA	NA															
LNAV/VNAV DA	3040-1½ 411 (400-1½)															
LNAV MDA	3320-1 691 (700-1)				3320-2 691 (700-2)				3320-2 691 (700-2¼)				3320-2¼ 691 (700-2¼)			
CIRCLING	3320-1 677 (700-1)				3320-2 677 (700-2)				3320-2¼ 677 (700-2¼)				3320-2¼ 677 (700-2¼)			

TUCSON, ARIZONA  
 Orig-B 09183

32°07'N - 110°56'W

# RNAV (GPS) RWY 29L

TUCSON INTL (TUS)