

BURRO TWO DEPARTURE (RNAV)

SL-430 (FAA)

TUCSON INTL (TUS)
TUCSON, ARIZONA

SW-4, 22 OCT 2009 to 19 NOV 2009

TAKE-OFF MINIMUMS

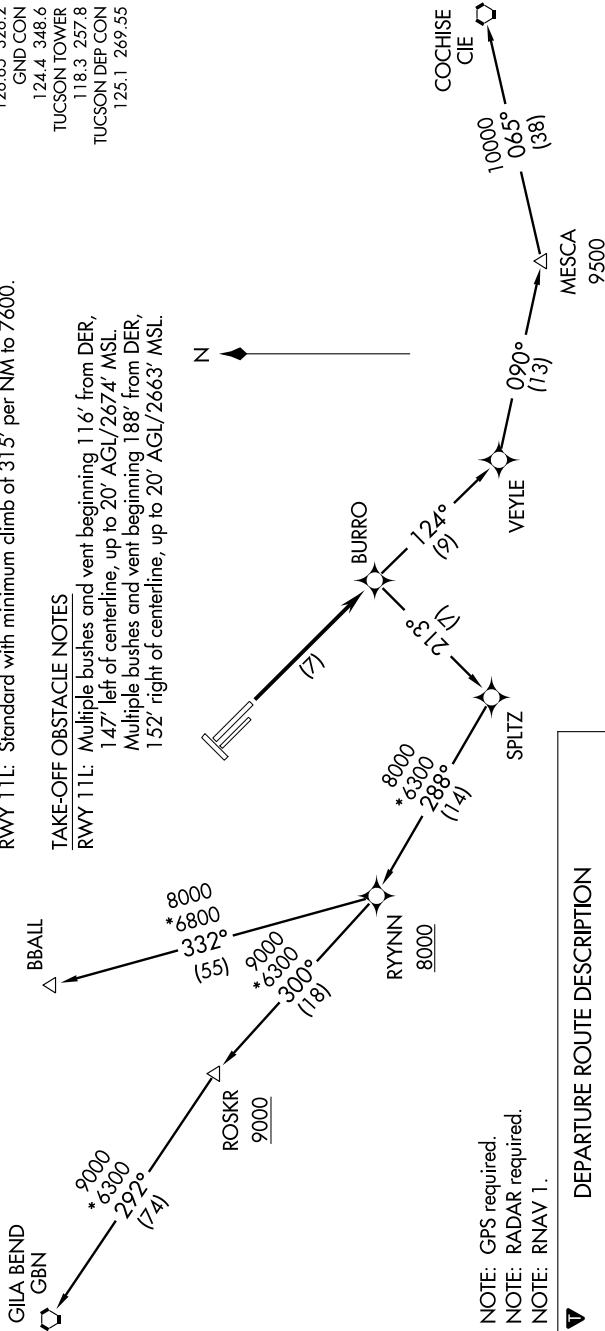
RWYS 11R, 21, 29L, 29R, 3: NA-(ATC).

RWY 11L: Standard with minimum climb of 315' per NM to 7600.

TAKE-OFF OBSTACLE NOTES

RWY 11L: Multiple bushes and vent beginning 116' from DER, 147' left of centerline, up to 20' AGL/2674' MSL.
Multiple bushes and vent beginning 188' from DER, 152' right of centerline, up to 20' AGL/2663' MSL.

ATIS
123.8 279.65
CLNC DEL
126.65 326.2
GND CON
124.4 348.6
TUCSON TOWER
118.3 257.8
TUCSON DEP CON
125.1 269.55



NOTE: GPS required.
NOTE: RADAR required.
NOTE: RNAV 1.

DEPARTURE ROUTE DESCRIPTION

TAKE-OFF RUNWAY 11L: Climb direct BURRO, thence....
...via (transition) climb and maintain 17000. Expect filed altitude 10 minutes after departure.
BBALL TRANSITION (BURRO2.BBALL)
COCHISE TRANSITION (BURRO2.CIE)
GILA BEND TRANSITION (BURRO2.GBN)

NOTE: Chart not to scale.

SW-4, 22 OCT 2009 to 19 NOV 2009

BURRO TWO DEPARTURE (RNAV)

TUCSON, ARIZONA
TUCSON INTL (TUS)