

TACAN DMA Chan 123	APCH CRS 299°	Rwy Idg 13,643 TDZE 2704 Arpt Elev 2704
------------------------------	-------------------------	--

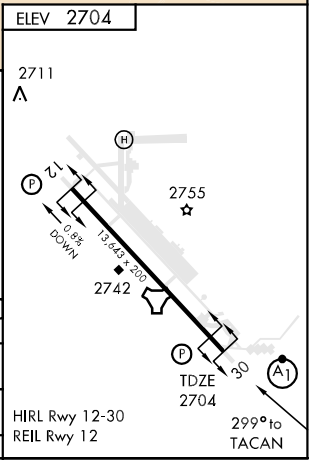
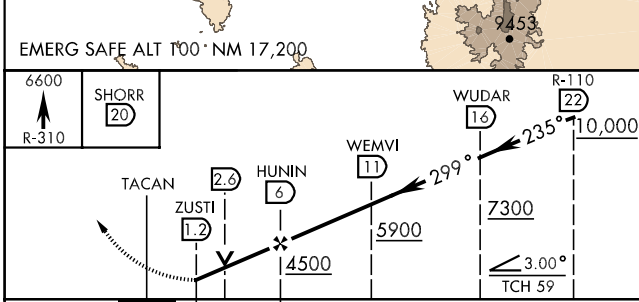
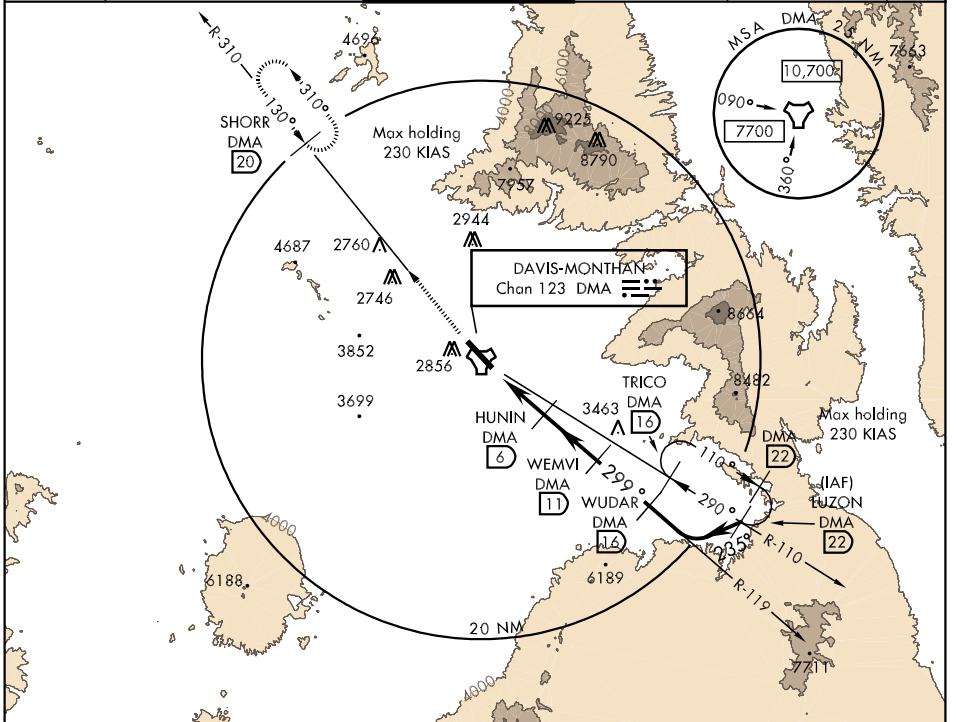
AL-429 [USAF]

DAVIS-MONTHAN AFB (KDMA)

▼ * When ALS inop, increase vis ½ mile.
 ** Circling not authorized S of Rwy 12-30.
 *** When ALS inop, increase vis ¼ mile.

ⓐ ALSF-1
ⓐ MISSED APPROACH: Climb to 6600 out DMA R-310 to 20 DME and hold.

ATIS★ 270.1	TUCSON APP CON 066°-274° 119.4 318.1 275°-065° 125.1 269.55	DAVIS-MONTHAN TOWER 118.85 253.5	GND CON 121.8 275.8	CLNC DEL 121.8 275.8	PAR
-----------------------	---	--	-------------------------------	--------------------------------	-----



CATEGORY	A	B	C	D	E
S-30 *	3340-½ 636 (700-½)		3340-1¼ 636 (700-1¼)	3340-1½ 636 (700-1½)	3340-1¾ 636 (700-1¾)
CIRCLING **	3340-1 636 (700-1)		3340-1¾ 636 (700-1¾)	3340-2 636 (700-2)	3380-2 ½ 676 (700-2½)
S-PAR 30***	2904-½ 200 (200-½)		GS 3.0°		

TUCSON, ARIZONA 32°10'N-110°53'W DAVIS-MONTHAN AFB (KDMA)

Orig 07298

SW-4, 22 OCT 2009 to 19 NOV 2009

SW-4, 22 OCT 2009 to 19 NOV 2009