

TUCSON, ARIZONA

# TACAN RWY 12

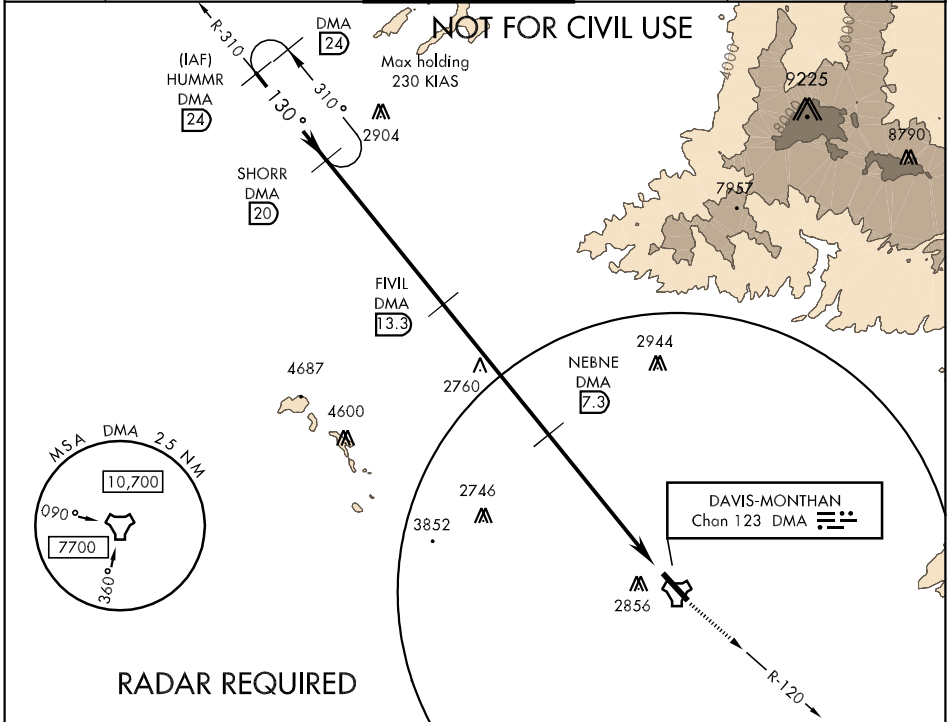
TACAN DMA <b>Chan 123</b>	APCH CRS <b>130°</b>	Rwy ldg TDZE Arpt Elev <b>13,643</b> <b>2615</b> <b>2704</b>
------------------------------	-------------------------	---

AL-429 [USAF]

DAVIS-MONTHAN AFB (KDMA)

⚠ \*\* Circling not authorized S of Rwy 12-30. MISSED APPROACH: Track outbound on DMA R-120 to 8000 MSL expect RADAR vectors.

ATIS★ <b>270.1</b>	TUCSON APP CON 090°-285° <b>125.1 269.55</b> 286°-089° <b>119.4 318.1</b>	DAVIS-MONTHAN TOWER <b>118.85 253.5</b>	GND CON <b>121.8 275.8</b>	CLNC DEL <b>121.8 275.8</b>	PAR
-----------------------	---	--	-------------------------------	--------------------------------	-----

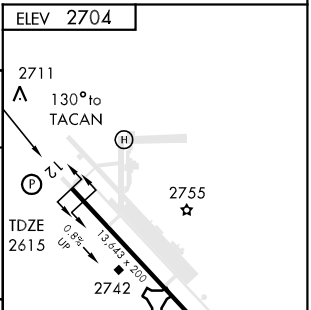
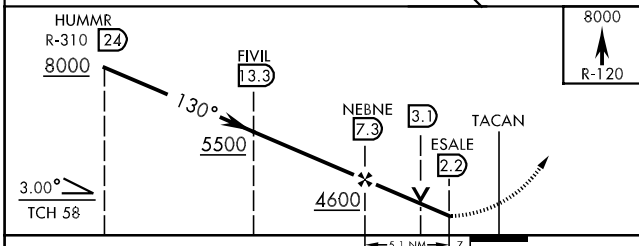


SW-4, 22 OCT 2009 to 19 NOV 2009

SW-4, 22 OCT 2009 to 19 NOV 2009

EMERG SAFE ALT 100 NM 17,200

ELEV 2704



CATEGORY	A	B	C	D	E
S-12	3160-1	545 (500-1)	3160-1½ 545 (500-1½)	3160-1¾ 545 (500-1¾)	3160-2 545 (500-2)
CIRCLING **	3220-1	516 (600-1)	3240-1½ 536 (600-1½)	3280-2 576 (600-2)	3380-2½ 676 (700-2½)
S-PAR 12	2815-¾		200 (200-¾)	GS 3.0°	

HIRL Rwy 12-30  
REIL Rwy 12

TUCSON, ARIZONA  
Orig 07298

32°10'N-110°53'W

DAVIS-MONTHAN AFB (KDMA)

# TACAN RWY 12