

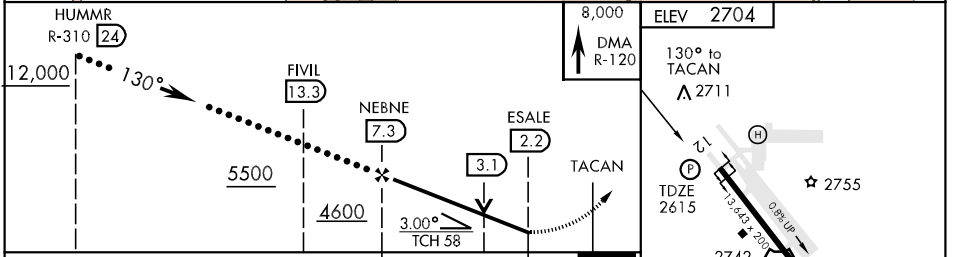
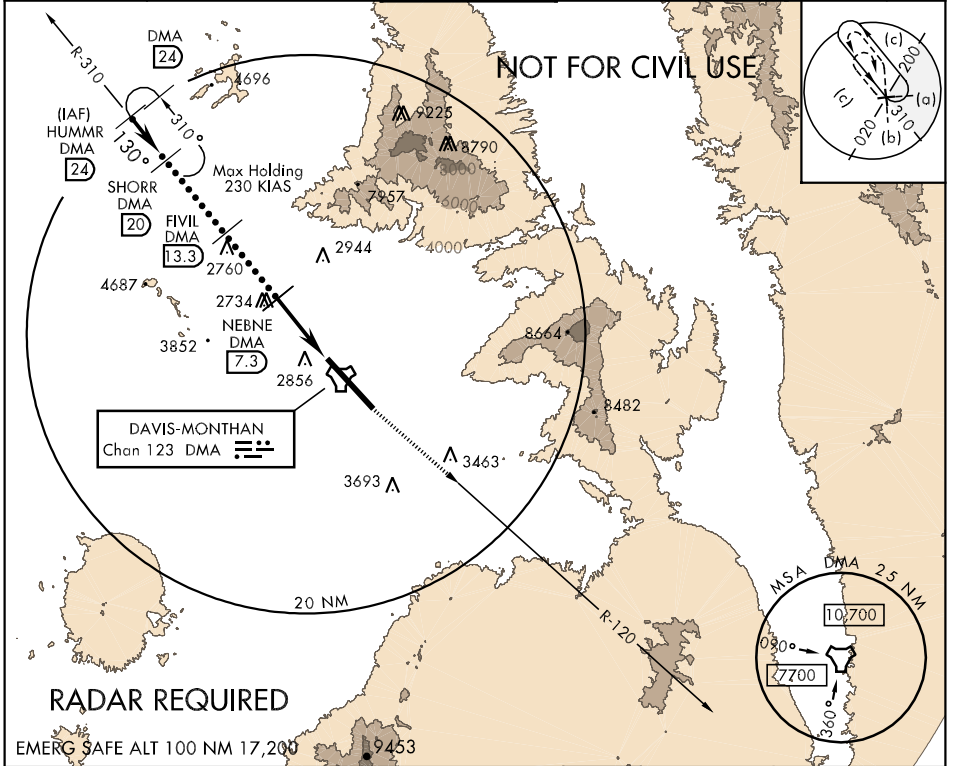
TUCSON, ARIZONA

HI-TACAN RWY 12

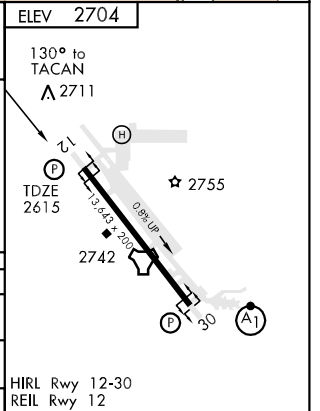
TACAN DMA Chan 123	APCH CRS 130°	Rwy Idg 13,643 TDZE 2615 Arpt Elev 2704	JAL-429 [USAF]	DAVIS-MONTHAN AFB (KDMA)
------------------------------	-------------------------	--	----------------	--------------------------

▼ * Circling not authorized S of Rwy 12-30.
 MISSED APPROACH: Track outbound on DMA R-120 to 8000 expect RADAR vectors.

ATIS ★ 270.1	TUCSON APP CON 125.1 269.55 (090° - 285°) 119.4 318.1 (275° - 089°)	DAVIS-MONTHAN TOWER 118.85 253.5	GND CON 121.8 275.8	CLNC DEL 121.8 275.8	PAR
------------------------	---	--	-------------------------------	--------------------------------	-----



CATEGORY	C	D	E
S-12	3160-1½ 545 (500-1½)	3160-1¾ 545 (500-1¾)	3160-2 545 (500-2)
CIRCLING *	3240-1½ 536 (600-1½)	3280-2 576 (600-2)	3380-2½ 676 (700-2½)
S-PAR 12	2815-¾	200 (200-¾)	GS 3.0°



TUCSON, ARIZONA 32°10'N-110°53'W DAVIS-MONTHAN AFB (KDMA)

HI-TACAN RWY 12

Orig 07298

SW-4, 22 OCT 2009 to 19 NOV 2009

SW-4, 22 OCT 2009 to 19 NOV 2009