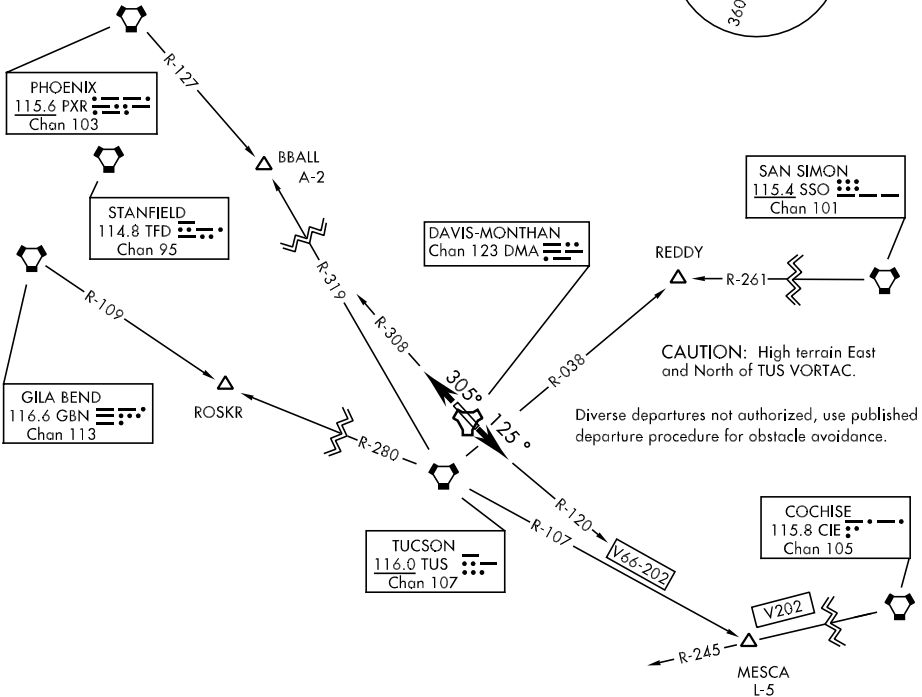
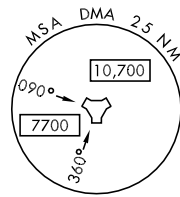


# DAVIS-MONTHAN THREE DEPARTURE (VECTOR) (DMA3.DMA)

SHL-429 [USAF]

ATIS ★ 270.1  
 CLNC DEL  
 121.8 275.8  
 GND CON  
 121.8 275.8  
 DAVIS-MONTHAN TOWER  
 118.85 253.5  
 TUCSON DEP CON  
 125.1 269.55  
 ALBUQUERQUE CENTER  
 127.95 351.8

## RADAR AND DME REQUIRED



SW-4, 22 OCT 2009 to 19 NOV 2009

SW-4, 22 OCT 2009 to 19 NOV 2009

EMERG SAFE ALT 100NM 17,200

### DEPARTURE ROUTE DESCRIPTION

**TAKE-OFF RWY 12:** Climb on track 125°, intercept DMA R-120 for vectors to assigned fix or route. Maintain 17,000 or assigned lower altitude. Expect clearance to filed altitude 10 minutes after departure.

**TAKE-OFF RWY 30:** Climb on track 305°, intercept DMA R-308 for vectors to assigned fix or route. Maintain 17,000 or assigned lower altitude. Expect clearance to filed altitude 10 minutes after departure.

**LOST COM:** Immediately climb to minimum safe altitude or last ATC assigned altitude, whichever is higher. Proceed to next assigned NAVAID or return to appropriate IAF for Davis-Monthan AFB active runway.