

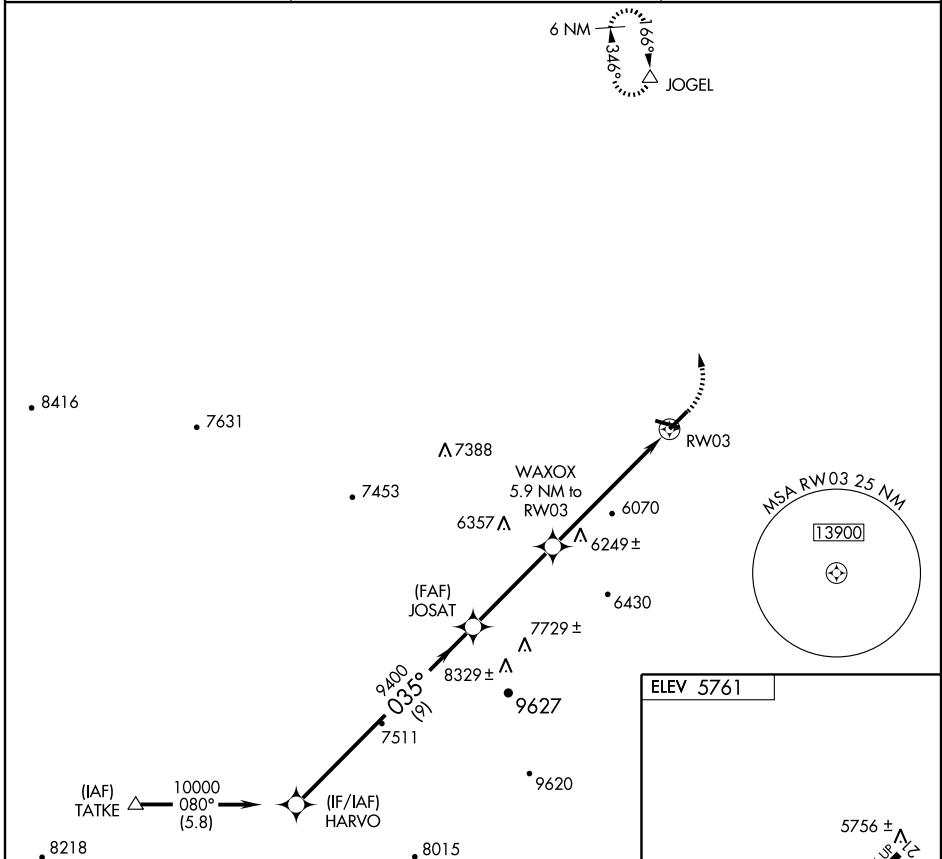
RNAV (GPS) RWY 3

TRINIDAD/ PERRY STOKES (TAD)

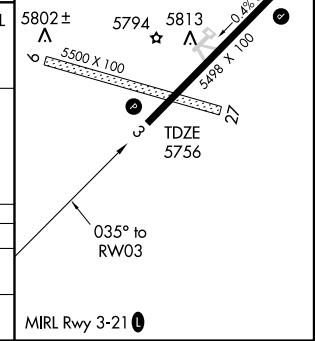
APP CRS 035°	Rwy Idg 5498
	TDZE 5756
	Apt Elev 5761

NA GPS or RNP-0.3 required. DME/DME RNP-0.3 NA. MISSED APPROACH: Climbing left turn to 8500 direct JOGEL WP and hold.

ASOS 119.025	DENVER CENTER 128.375 379.95	UNICOM 122.8 (CTAF)
------------------------	--	-------------------------------



	HARVO	JOSAT	WAXOX 5.9 NM to RW03	8500	JOGEL
Procedure Turn NA	10000	9400	7940		
VGSi and descent angles not coincident.					
	9 NM	4.1 NM	3.7 NM	2.2	
CATEGORY	A	B	C	D	
LNAV MDA	6500-1 744 (800-1)	6500-1¼ 744 (800-1¼)	6500-2¼ 744 (800-2¼)	6500-2½ 744 (800-2½)	
CIRCLING	6500-1 739 (800-1)	6500-1¼ 739 (800-1¼)	6500-2¼ 739 (800-2¼)	6500-2½ 739 (800-2½)	



SW-1, 22 OCT 2009 to 19 NOV 2009

SW-1, 22 OCT 2009 to 19 NOV 2009