

RNAV (GPS) Z RWY 23

BRISTOL / TRI-CITIES RGNL TN/VA (TRI)

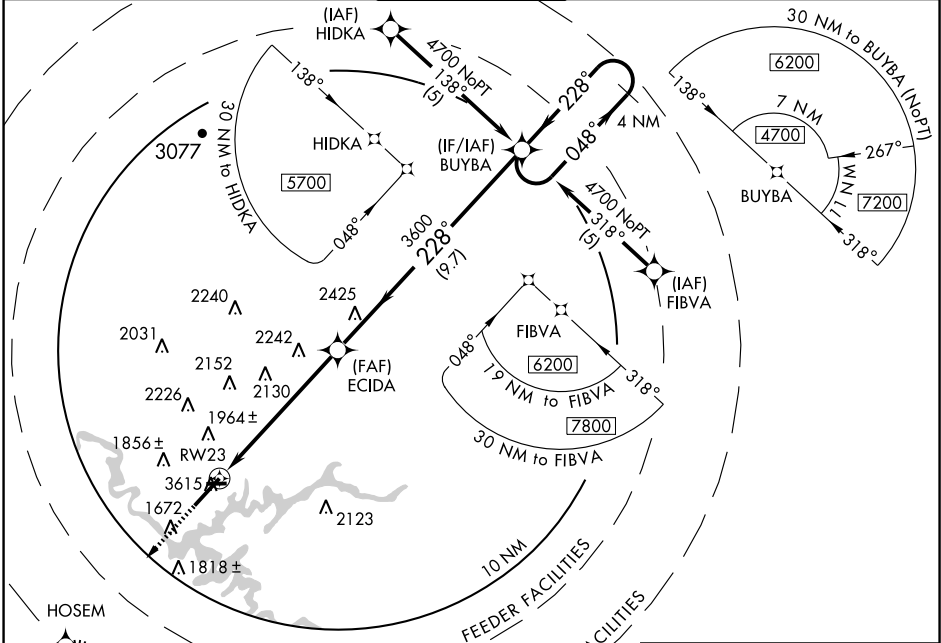
APP CRS	Rwy Idg	8000
228°	TDZE	1518
	Apt Elev	1519

Circling NA NW of Rwy 9 and 23. Circling to Rwy 09 NA at night.
 GPS or RNP-0.3 Required. DME/DME RNP-0.3 NA.
 Baro-VNAV NA below -18° C (0°F).
 When VGSI inoperative, circling Rwy 27 NA at night.

ALSF-2

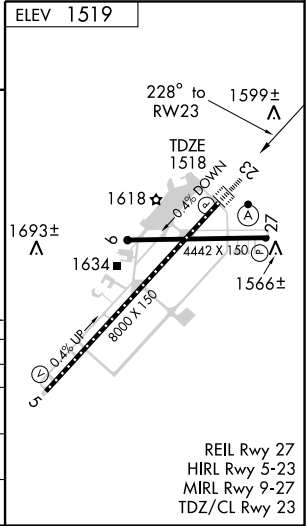
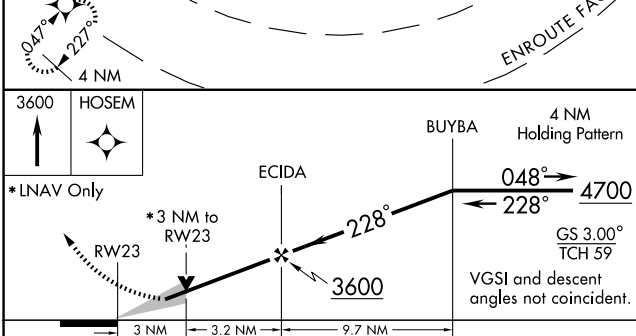
MISSED APPROACH: Climb to 3600
 direct HOSEM WP and hold.

ATIS 118.25	TRI-CITY APP CON* 134.425 317.5	TRI-CITY TOWER* 119.5 (CTAF) 257.8	GND CON 121.7 348.6	UNICOM 122.95
-----------------------	---	--	-------------------------------	-------------------------



SE-1, 22 OCT 2009 to 19 NOV 2009

SE-1, 22 OCT 2009 to 19 NOV 2009



HOSEM	↑	3600	HOSEM	4 NM	BUYBA	4 NM	Holding Pattern
*LNAV Only							
RWY 23		3 NM	3.2 NM	ECIDA	228°	9.7 NM	BUYBA
				3600	048°	4700	
						GS 3.00°	TCH 59
						VGSI and descent angles not coincident.	
CATEGORY	A	B	C	D			
GLS PA DA	NA						
LNAV/VNAV DA	2360-2½		842 (900-2½)				
LNAV MDA	2560/40 1042 (1100-¾)	2560/50 1042 (1100-1)	2560-2½	1042 (1100-2½)			
CIRCLING	2560-3		1041 (1100-3)				